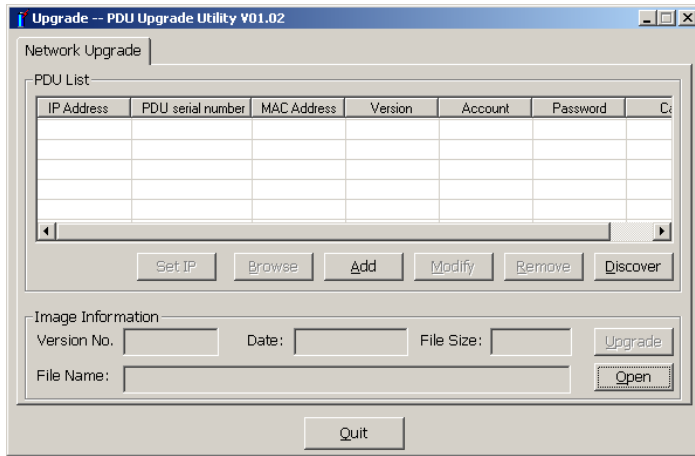


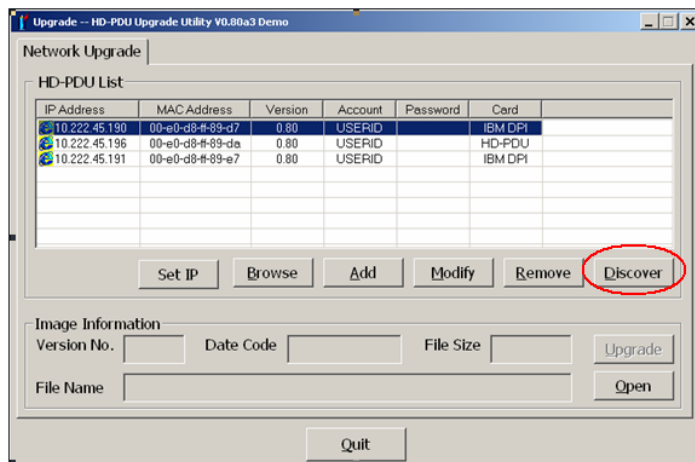
# System x Distributed Power Interconnect (DPI) PDU Upgrade Instructions

**Note:** PDU must already be configured for and operating from the network you are connected too prior to upgrading.

1) Launch the tool PDU\_Upgrade.exe from a PC connected on the same subnet as the unit.

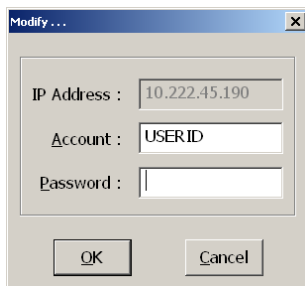


2) Click “Discover” to find the units on your subnet

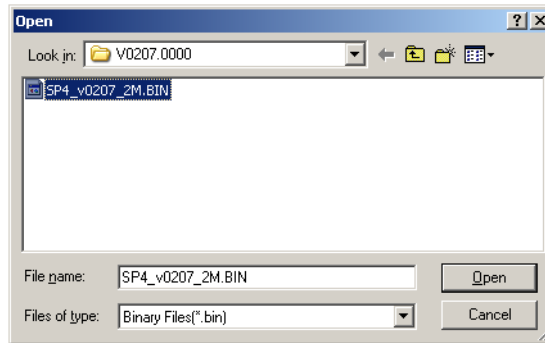
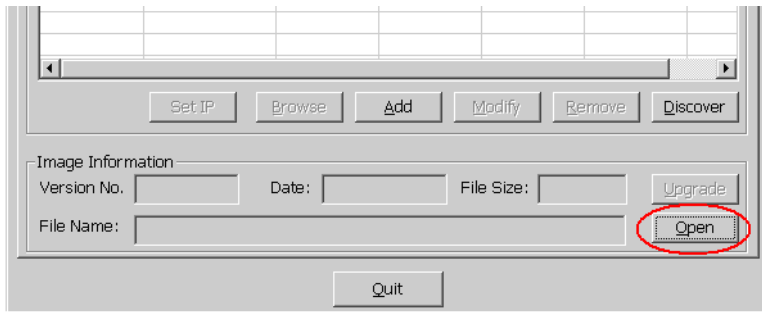


(NOTE: Image above is from an older version of the upgrade tool but is still very similar)

3) Double click on a unit from the list to be upgraded and enter the PDU admin account & password which is USERID & passw0rd by default (customer may have changed it). Click OK when done.

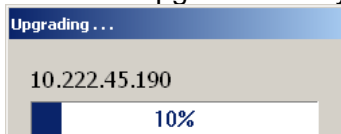


4) Select “Open” then select the file \*.bin included in the zip

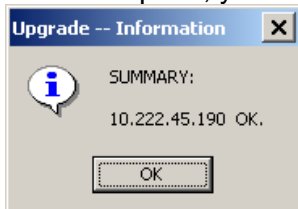


5) The upgrade button will now be available, click the “Upgrade” button to begin the flash upgrade process. (Note: If you highlight multiple units they will all be upgraded simultaneously)

When the upgrade starts you will see progress bar until the upgrade is complete.



Once complete, you will get a final message similar this indicating upgrade was successful.



The upgrade is complete you can select OK and close the program. The PDU microprocessor will reset and automatically recover to normal operation in about 2 minutes.