

Lenovo ThinkServer Partner Pack for System Center Configuration Manager Installation Guide



ThinkThink**ThinkServer**Think

Note: Before using this information and the product it supports, ensure that you read and understand Appendix A “Notices” on page 16.

Third Edition (January 2015)

© Copyright Lenovo 2015.

LIMITED AND RESTRICTED RIGHTS NOTICE: If data or software is delivered pursuant a General Services Administration

“GSA” contract, use, reproduction, or disclosure is subject to restrictions set forth in Contract No. GS-35F-05925.

Table of Contents

1	Introduction	5
<hr/>		
1.1	Purpose	5
1.2	Audience and Scope	5
1.3	Conventions Used in the Document	5
2	Installation Overview	6
<hr/>		
2.1	System Requirements	6
2.2	Pre-installation Task	7
2.3	Installation Procedure	8
2.4	Uninstallation Procedure	12
3	Additional Information	14
<hr/>		
3.1	Troubleshooting	14
3.2	Abbreviations	14
3.3	Frequently Asked Questions (FAQs)	14
4	Appendix A. Notices	16
5	Trademarks	17
<hr/>		

List of Figures

Figure 1: Lenovo ThinkServer Partner Pack for Microsoft SCCM-Main Screen.....	6
Figure 2: Installer Pack	8
Figure 3: Welcome screen	8
Figure 4: License Agreement Screen	9
Figure 5: Select Destination Location.....	9
Figure 6: Select SCCM	10
Figure 7: Ready to Install.....	10
Figure 8: Installation complete Dialog Box	11
Figure 9: LenovoThinkServer Partner Pack Folder Structure.....	11
Figure 10: All Control Panel Screen	12
Figure 11: Uninstall Screen	13
Figure 12: Uninstall Message	13

1 Introduction

1.1 Purpose

The purpose of this guide is to explain the processes involved in installing the Lenovo ThinkServer Partner Pack. Lenovo ThinkServer Partner Pack for System Center Configuration Manager can be installed on a System Center Configuration Manager (SCCM) server.

1.2 Audience and Scope



This guide is intended for system administrators and network administrators who are responsible for installing and managing the Lenovo ThinkServer with Intel® Xeon® processor E5-2600 v3 or Intel® Xeon® processor E5-2600 v2 product family and above.

This guide covers:

- Pre-requisites
- Installation procedure
- Launching the application
- Troubleshooting
- Registering
- Unregistering
- Un-installation
- Frequently asked questions

1.3 Conventions Used in the Document

This table describes the symbols used in this guide.

Convention	Explanation
Bold	Elements of graphical user interface, for example, menus and command buttons
>	Sequence of menu items to choose
courier font	User input, directory and file names, command line syntax and examples
	This symbol highlights important information and tips.
	This symbol is used to draw attention to risks which may represent a health hazard or which may lead to data loss or damage to the hardware.

2 Installation Overview

The Lenovo ThinkServer Partner Pack for Microsoft System Center Configuration Manager contains an installation program that helps you to install the Partner Pack. Upon running the installation wizard, you can install the management pack, tools and documents of Lenovo ThinkServer Partner Pack for Microsoft System Center Configuration Manager in the *LenovoThinkServerPartnerPack* **folder**, which is in the *Program Files* folder of your computer.

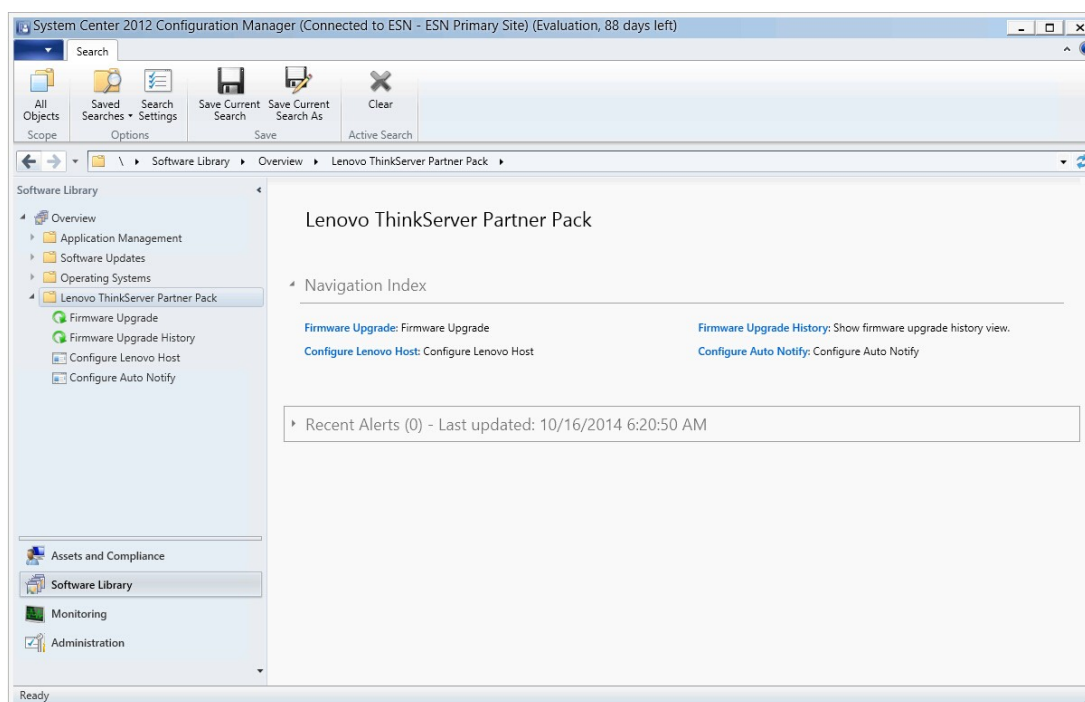


Figure 1: Lenovo ThinkServer Partner Pack for Microsoft SCCM-Main Screen

2.1 System Requirements

This section describes the hardware and software prerequisites to install Lenovo ThinkServer Partner Pack for Microsoft System Center Configuration Manager.

2.1.1 Hardware Requirements

The following list provides the minimum hardware requirements to install the Lenovo ThinkServer Partner Pack for Microsoft System Center Configuration Manager.

- Lenovo ThinkServer server with Intel® Xeon® processor E5-2600 v3 or Intel® Xeon® processor E5-2600 v2 product family and above along with Windows Server 2008 R2 SP1 / Windows Server 2012 (SP1, SP2) / Windows Server 2012 R2.
- 64 bit HW with 8GB or more RAM
- 500 GB HDD
- 1024 * 728 Resolution Monitor or Higher
- TFT monitor for better resolution and width

2.1.2 Software Requirements

The following list provides the minimum software requirements to install the Lenovo ThinkServer Partner Pack for Microsoft System Center Configuration Manager.

- Operating Systems: Windows Server 2008 R2 SP1 / Windows Server 2012 (SP1, SP2) / Windows Server 2012 R2.
- System Center Products: Configuration Manager 2012 SP1
- SQL Server: SQL Server 2012 R2 SP1 - SQL Server 2008 R2
- SCCM: SCCM 2012 R2 / SCCM 2012 SP1

Other Pre-requisites

- .Net 4.0 or above should be installed on the SCCM Server

2.2 Pre-installation Task

Before installing the Lenovo ThinkServer Partner Pack for Microsoft System Center Configuration Manager on your system, perform the following pre-installation steps:

1. Ensure that you have the Administrator access to the target computer.
2. Ensure that your computer is updated with the latest Windows updates.
3. Lenovo ThinkServer Partner Pack for Microsoft System Center Configuration Manager will be installed only on the Management. Hence, make sure that you have a SCCM server, SQL Server installed & properly configured already.
4. Ensure you have all the following required pre-requisites installed in your server:
 - a. Net 4.0 or above need to be installed in SCCM Server
5. Close all the applications including the Configuration console, Windows NT Event Viewer and PowerShell etc.

2.3 Installation Procedure

1. Once all the prerequisite checks and controls are completed, you may proceed with the Lenovo ThinkServer Partner Pack installation. In order to start with the Lenovo ThinkServer Partner Pack for Microsoft System Center Configuration Manager installation, double-click on the Installer package:
LenovoThinkServerPartnerPack.EXE
and follow the wizard to complete the installation.



Figure 2: Installer Pack

2. The Lenovo welcome screen is displayed

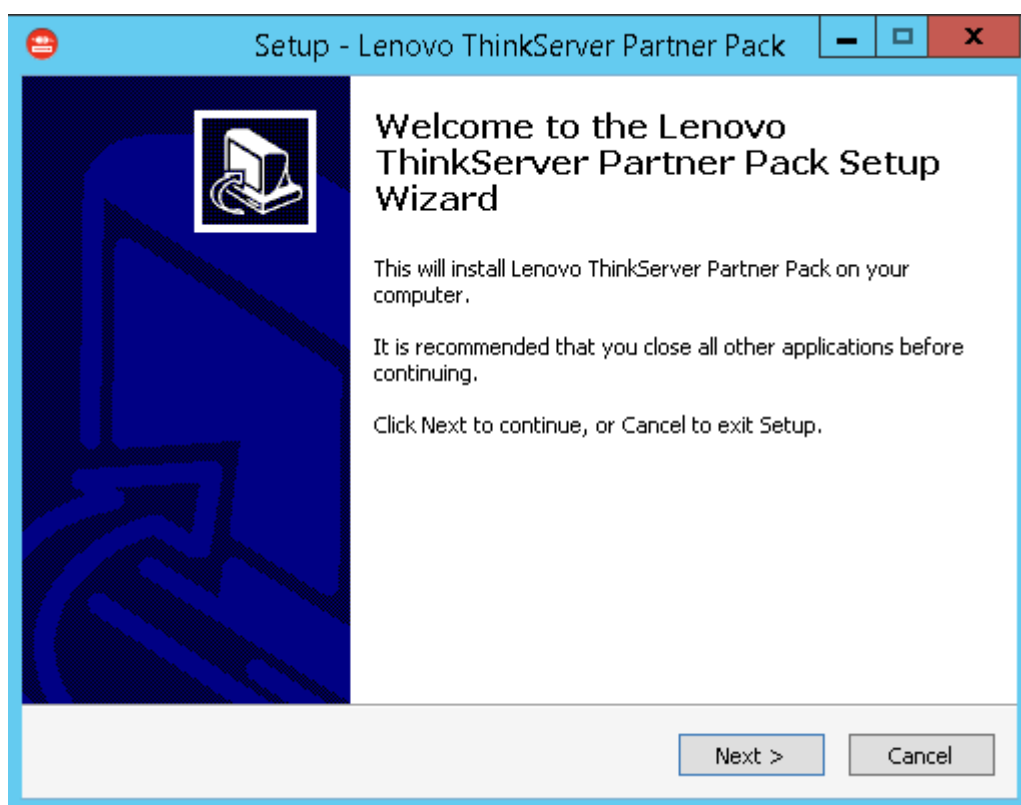


Figure 3: Welcome screen

3. Click **Next** to proceed. The Lenovo ThinkServer Partner Pack License Agreement screen is displayed.

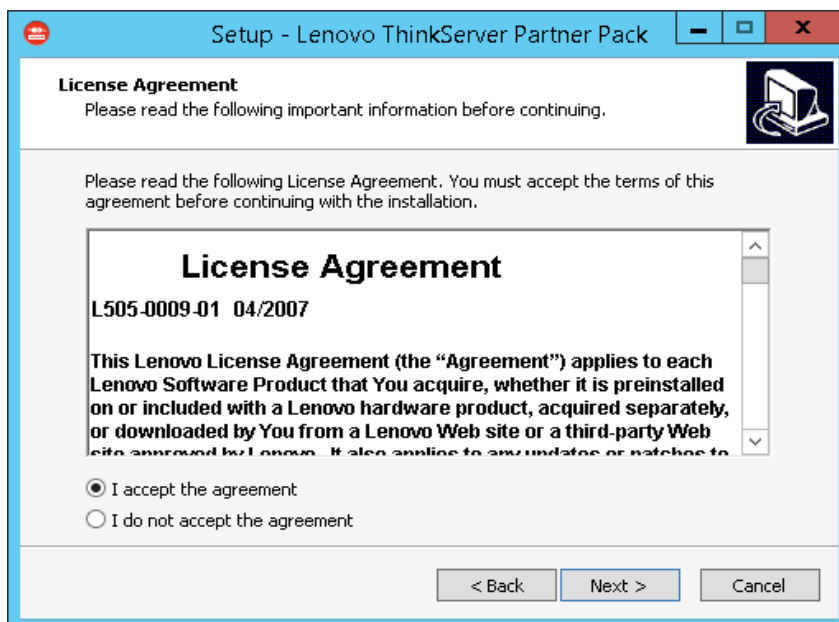


Figure 4: License Agreement Screen

4. The End User License Agreement (EULA) screen provides the End User License Agreement details which need to be read before proceeding with the installation. In order to proceed with the installation, select “**I accept the agreement**” and Click **Next**. If the “**I do not accept the agreement**” option is selected, the installation is terminated.

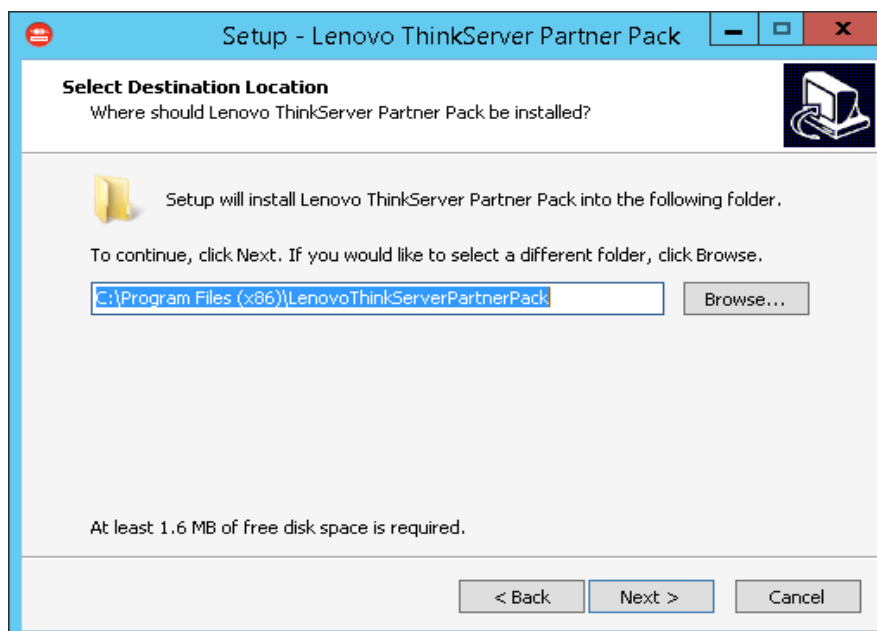


Figure 5: Select Destination Location

5. Select Destination Location screen will be displayed. If you want to change the Installation folder shown by default, click on Browse button and choose desired Folder as destination location for the installation. Click **Next**.

6. The **Select Components** screen will be displayed. Select **SCCM Plugin** and Click **Next**.

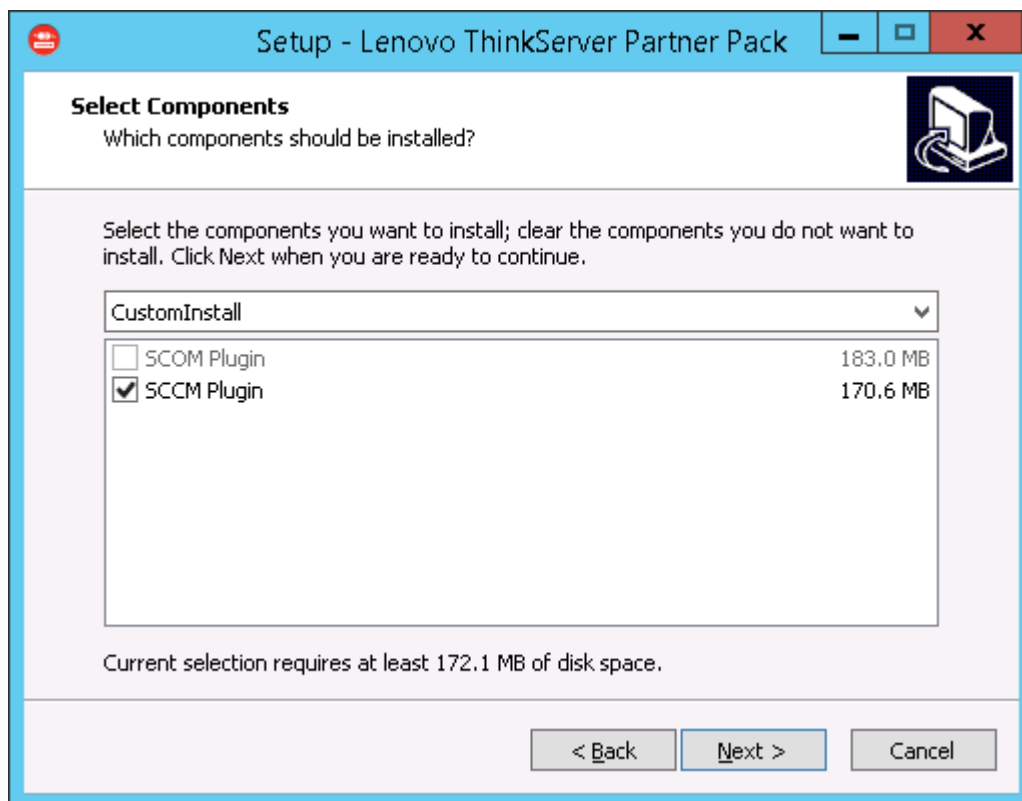


Figure 6: Select SCCM

7. Information chosen in previous step will be displayed in this screen. Click **Install**.

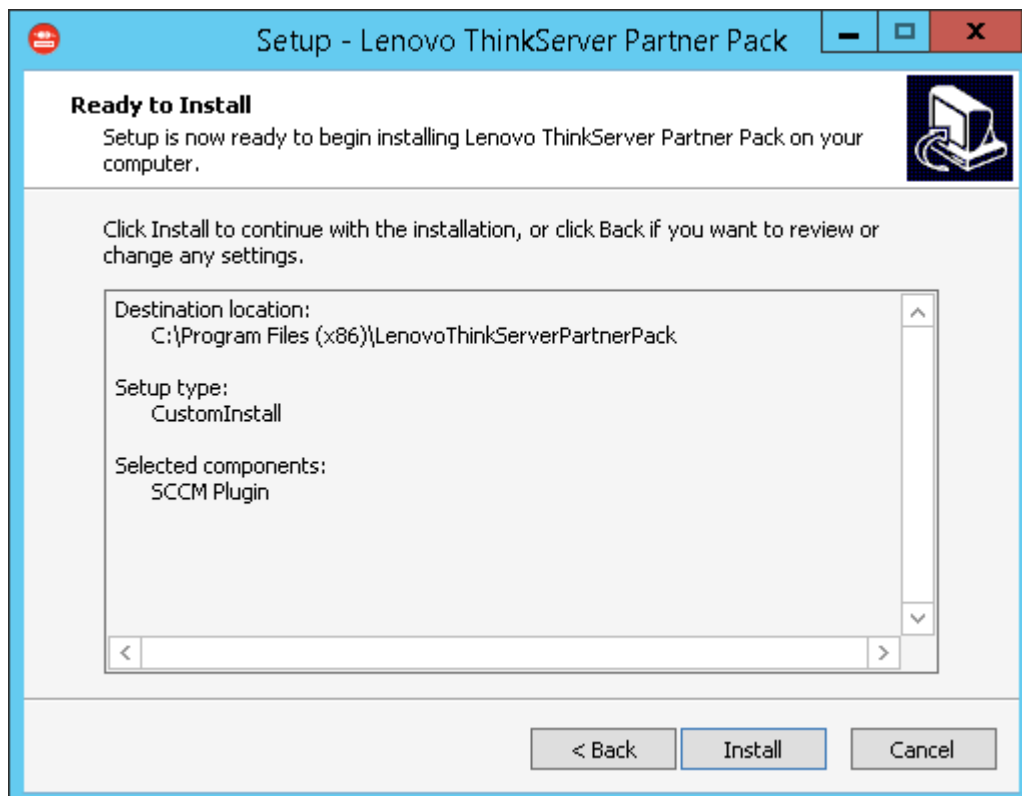


Figure 7: Ready to Install

The **Ready to install** screen is displayed. Information on Destination location chosen in previous step will be displayed in this screen.

8. Click **Install**.

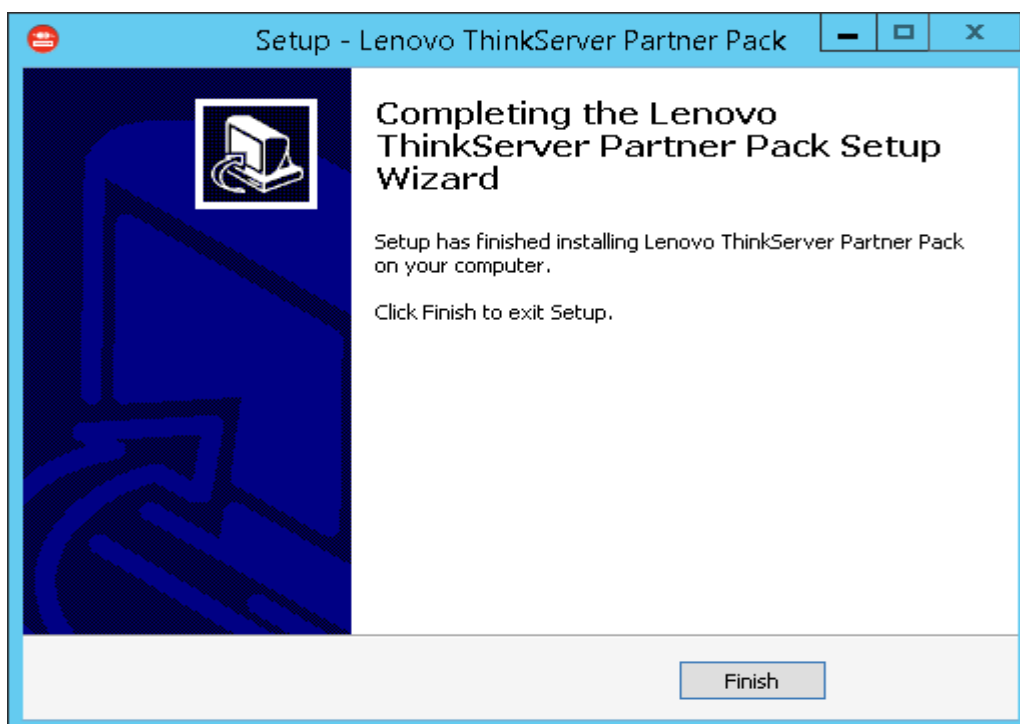


Figure 8: Installation complete Dialog Box

9. Click **Finish**.

10. Navigate to the folder chosen as destination location in step 5. Double-click the *LenovoThinkServerPartnerPack\SCCM* folder. You will be able to see the folder structure as shown below.

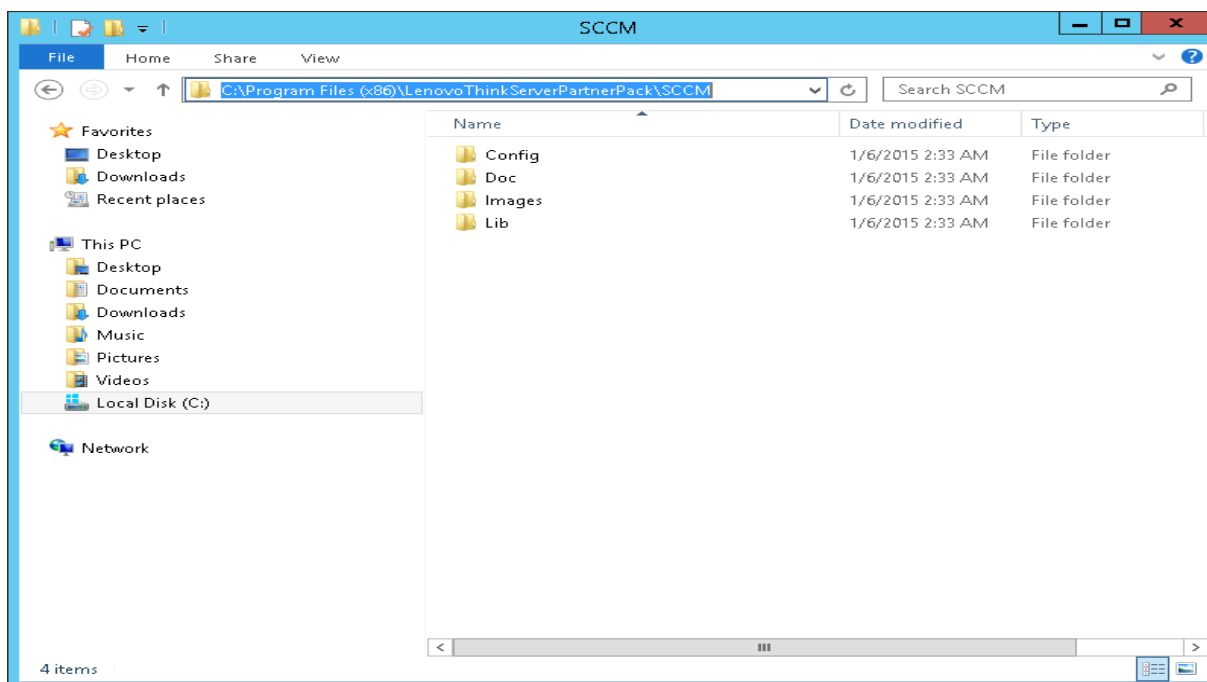


Figure 9: LenovoThinkServer Partner Pack Folder Structure

2.4 Uninstallation Procedure

2.4.1 Uninstalling Lenovo ThinkServer Partner Pack for Microsoft System Center Configuration Manager

Lenovo ThinkServer Partner Pack for Microsoft System Center Configuration Manager application can be uninstalled by using the following steps:

1. Navigate to **Control Panel>Add and Remove Programs/Programs & Features**.

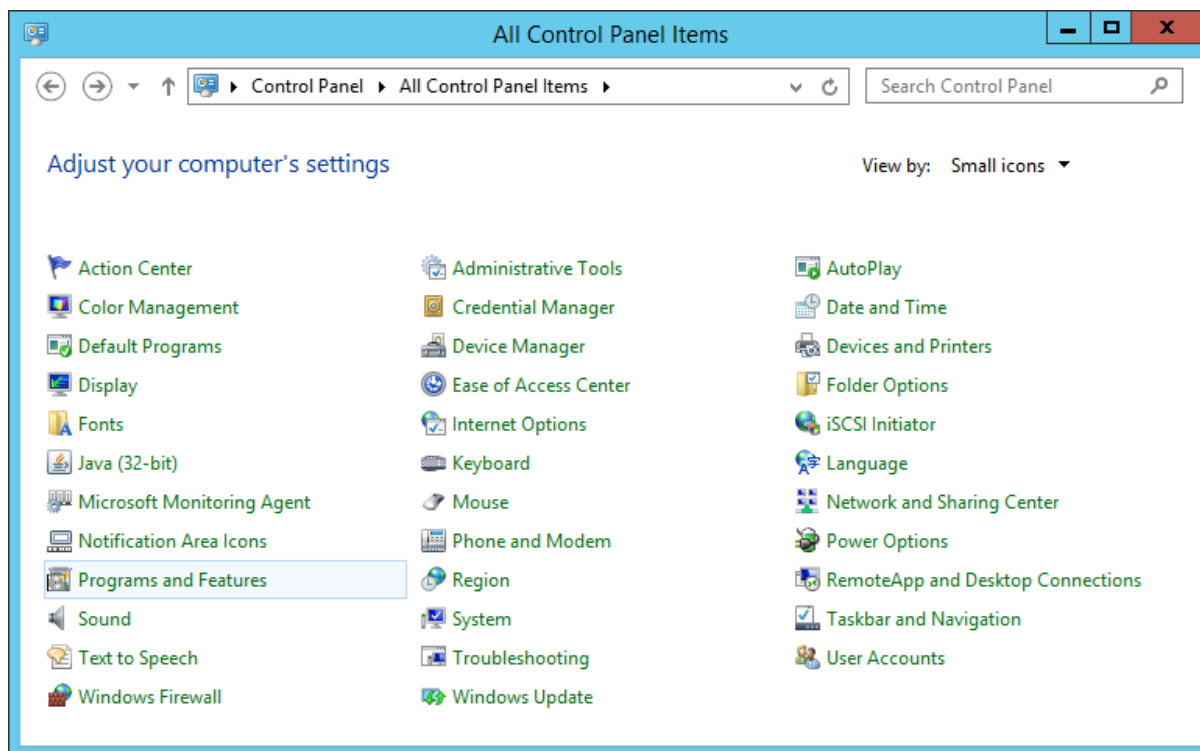


Figure 10: All Control Panel Screen

2. Select **Lenovo ThinkServer Partner Pack** installer and click **Uninstall**.

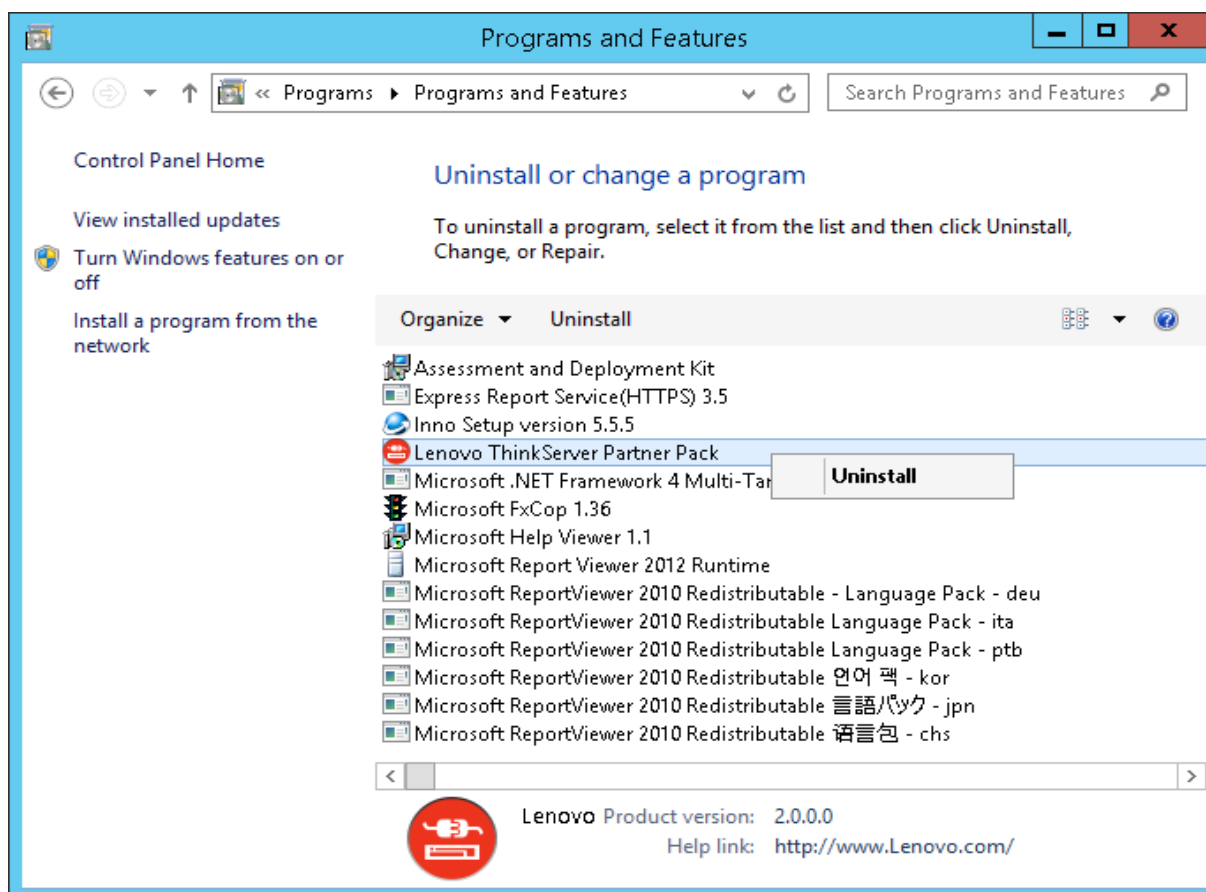


Figure 11: Uninstall Screen

3. A dialog box with a message **Are you sure you want to uninstall Lenovo ThinkServer Partner Pack for Microsoft System Center Configuration Manager** is displayed.
4. Click **Yes** to uninstall.

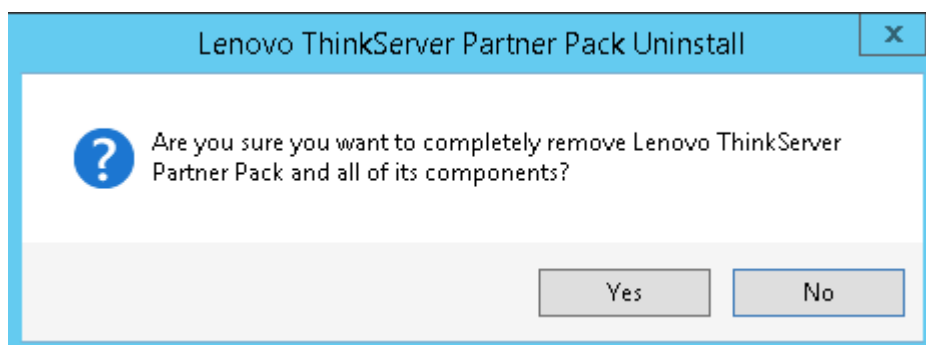



Figure 12: Uninstall Message

5. Lenovo ThinkServer Partner Pack for Microsoft System Center Configuration Manager is uninstalled from your computer.

3 Additional Information

3.1 Troubleshooting

 **Error# 1:** *Lenovo ThinkServer Partner Pack for Microsoft System Center Configuration Manager fails, Event ID 26319*

Solution: Delete the old version of the Lenovo ThinkServer Partner Pack and import the new version of the Lenovo ThinkServer Partner Pack for Microsoft System Center Configuration Manager.

3.2 Abbreviations

Value	Definition
SCCM	System Center Configuration Manager
MP	Management Pack
BMC	Baseboard Management Controller
CIM	Common Information Model
HTML	Hyper Text Mark-up Language

3.3 Frequently Asked Questions (FAQs)

1. Lenovo ThinkServer Partner Pack for Microsoft System Center Configuration Manager will work with all Lenovo Servers?

Lenovo ThinkServer Partner Pack for Microsoft System Center Configuration Manager is available only for Lenovo ThinkServer with Intel® Xeon® processor E5-2600 v2 product family or Intel® Xeon® processor E5-2600 v3 product family or above.

2. Does Lenovo ThinkServer Partner Pack for Microsoft System Center Configuration Manager work with browsers like Google Chrome & Mozilla Firefox?

No. Lenovo ThinkServer Partner Pack for Microsoft System Center Configuration Manager works with SCCM console only.

3. Where can we install Lenovo ThinkServer Partner Pack for Microsoft System Center Configuration Manager?

Lenovo ThinkServer Partner Pack for Microsoft System Center Configuration Manager is targeted on a SCCM server.

4. Are there any different user privileges required for us to run the Lenovo ThinkServer Partner Pack for Microsoft System Center Configuration Manager?

No, but ensure that you have administrator access to the system, in which you are installing the Lenovo ThinkServer Partner Pack for Microsoft System Center Configuration Manager. Moreover, there is no special user privilege required to access Lenovo ThinkServer Partner Pack for Microsoft System Center Configuration Manager.

5. Where can I get the Lenovo ThinkServer Partner Pack for Microsoft System Center Configuration Manager?

Lenovo ThinkServer Partner Pack for Microsoft System Center Configuration Manager is available on the global website of Lenovo.

6. How can I reach Lenovo if there is an issue with Lenovo ThinkServer Partner Pack for Microsoft System Center Configuration Manager?

You can reach Lenovo support (refer contact information) and submit your questions or concerns.

4 Appendix A. Notices

Lenovo may not offer the products, services, or features discussed in this document in all countries. Consult your local Lenovo representative for information on the products and services currently available in your area. Any reference to a Lenovo product, program, or service is not intended to state or imply that only that Lenovo product, program, or service may be used. Any functionally equivalent product, program, or service that does not infringe any Lenovo intellectual property right may be used instead. However, it is the user's responsibility to evaluate and verify the operation of any other product, program, or service.

Lenovo may have patents or pending patent applications covering subject matter described in this document. The furnishing of this document does not give you any license to these patents. You can send license inquiries, in writing, to:

Lenovo (United States), Inc.

1009 Think Place - Building One

Morrisville, NC 27560

U.S.A.

Attention: Lenovo Director of Licensing

LENOVO PROVIDES THIS PUBLICATION "AS IS" WITHOUT WARRANTY OF ANY KIND, EITHER EXPRESS OR IMPLIED, INCLUDING, BUT NOT LIMITED TO, THE IMPLIED WARRANTIES OF NON-INFRINGEMENT, MERCHANTABILITY OR FITNESS FOR A PARTICULAR PURPOSE. Some jurisdictions do not allow disclaimer of express or implied warranties in certain transactions, therefore, this statement may not apply to you.

This information could include technical inaccuracies or typographical errors. Changes are periodically made to the information herein; these changes will be incorporated in new editions of the publication. Lenovo may make improvements and/or changes in the product(s) and/or the program(s) described in this publication at any time without notice.

The products described in this document are not intended for use in implantation or other life support applications where malfunction may result in injury or death to persons. The information contained in this document does not affect or change Lenovo product specifications or warranties. Nothing in this document shall operate as an express or implied license or indemnity under the intellectual property rights of Lenovo or third parties. All information contained in this document was obtained in specific environments and is presented as an illustration. The result obtained in other operating environments may vary.

Lenovo may use or distribute any of the information you supply in any way it believes appropriate without incurring any obligation to you.

Any references in this publication to non-Lenovo Web sites are provided for convenience only and do not in any manner serve as an endorsement of those Web sites. The materials at those Web sites are not part of the materials for this Lenovo product, and use of those Web sites is at your own risk. Any performance data contained herein was determined in a controlled environment. Therefore, the result obtained in other operating environments may vary significantly. Some measurements may have been made on development-level systems and there is no guarantee that these measurements will be the same on generally available systems. Furthermore, some measurements may have been estimated through extrapolation. Actual results may vary. Users of this document should verify the applicable data for their specific environment.

5 Trademarks

Lenovo, the Lenovo logo, and ThinkServer are trademarks of Lenovo in the United States, other countries, or both.

Intel and Intel Core are trademarks of Intel Corporation in the United States, other countries, or both.

Hyper-V, Internet Explorer, Microsoft, Windows, and Windows Server are trademarks of the Microsoft group of companies.

Linux is a registered trademark of Linus Torvalds.

AMD and AMD Athlon are trademarks of Advanced Micro Devices, Inc.

Other company, product, or service names may be trademarks or service marks of others.