

Windows 10 Installation

Lenovo ThinkStation P340 Small Form Factor & Tower



Contents

OVERVIEW

SECTION 1 – BIOS & PRE-INSTALLATION STEPS

SECTION 2 – WINDOWS 10 INSTALLATION

SECTION 3 – DOCUMENT REVISION HISTORY

Overview

The purpose of this document is to provide guidance for users on how to install a Windows 10 retail operating system on their ThinkStation P340 Small Form Factor (SFF) and Tower (TWR) systems.

Section 1 – BIOS & Pre-Installation Steps

The first step before installing Windows is to make sure BIOS is setup correctly. It is important to ensure that the BIOS is set to the optimum (default) settings before beginning the installation.

- Boot into BIOS by pressing the F1 key at the “Lenovo” splash screen.

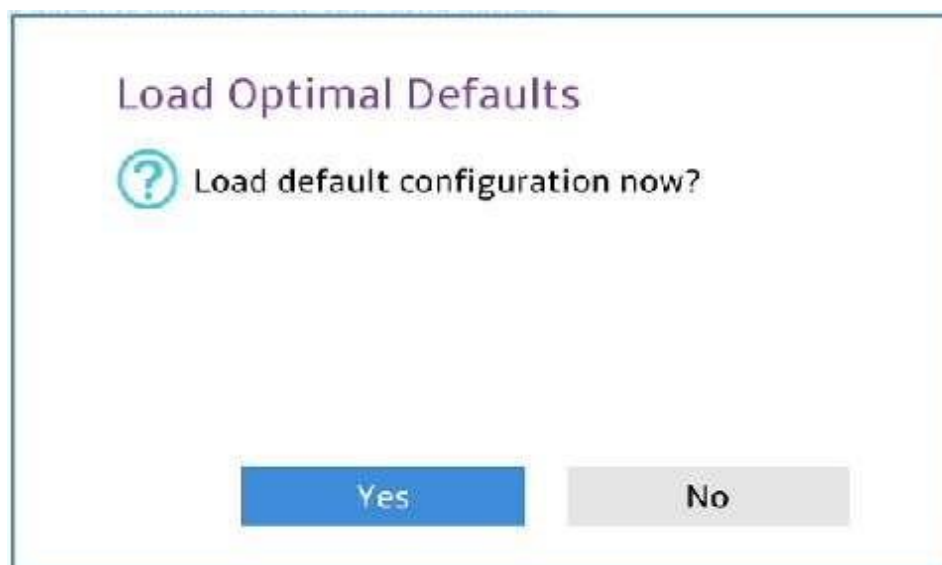
A black rectangular splash screen with the word "Lenovo" in white, sans-serif font, centered horizontally and vertically. A small trademark symbol (TM) is visible to the right of the word.

Lenovo[™]

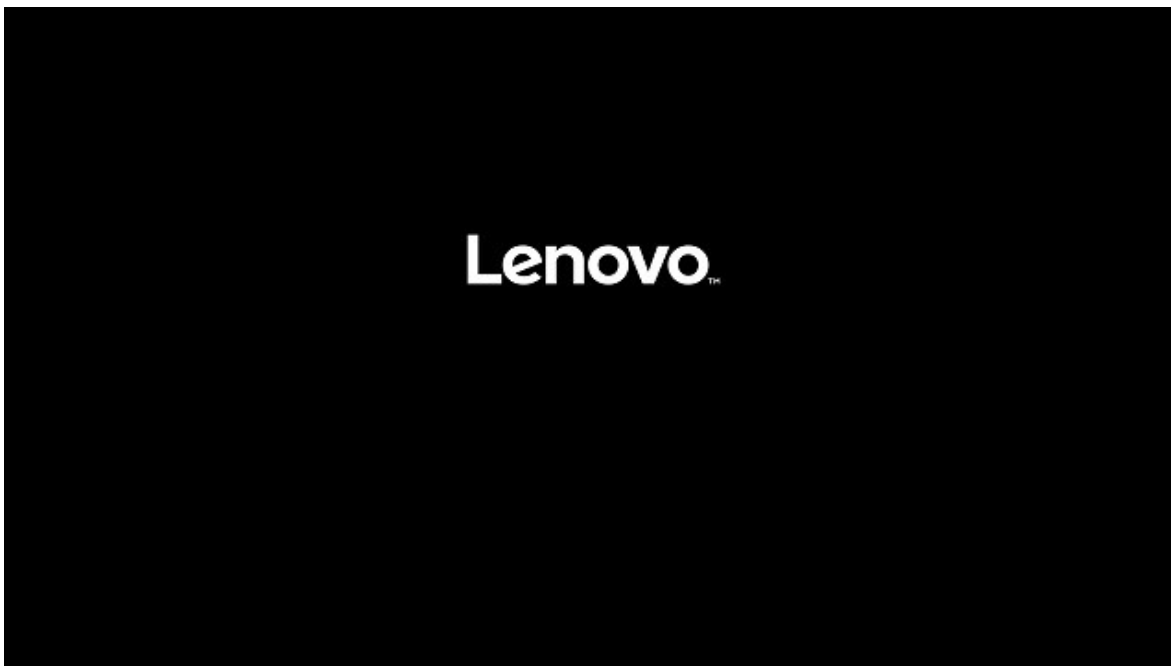
- Select the “Exit” menu option along the left column and then select “Load Optimal Defaults” and select “Yes” at the prompt.



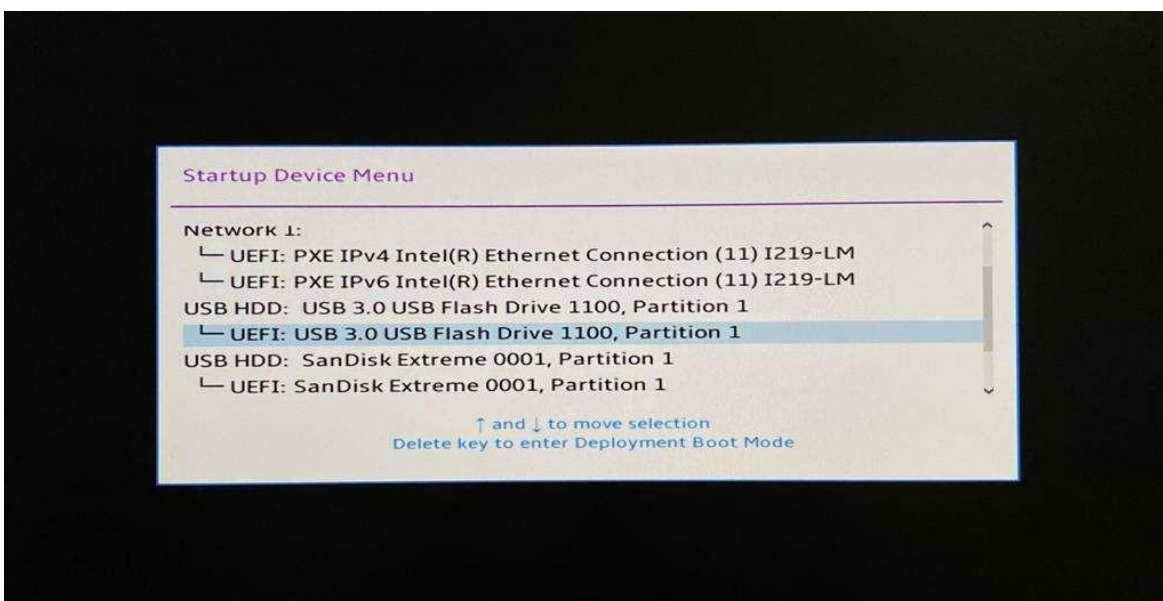
- Select “Yes” in the confirmation window.



- Select F10 to “Save and Exit” BIOS.
- Insert the Windows 10 install media (either through USB or CD/DVD).
- Power on the system and press the F12 key whenever the following Lenovo splash screen appears.



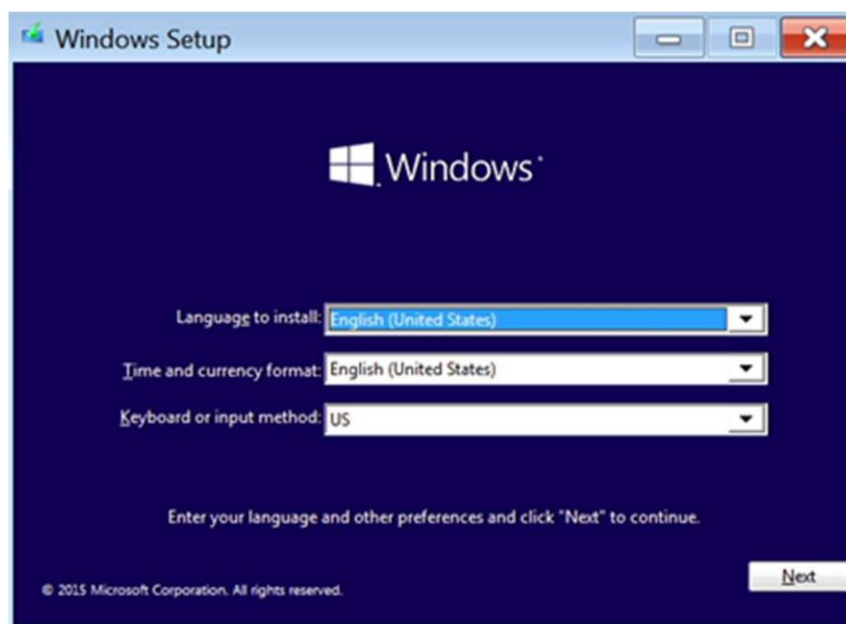
- Select the proper Windows bootable installation media option from the F12 boot menu.



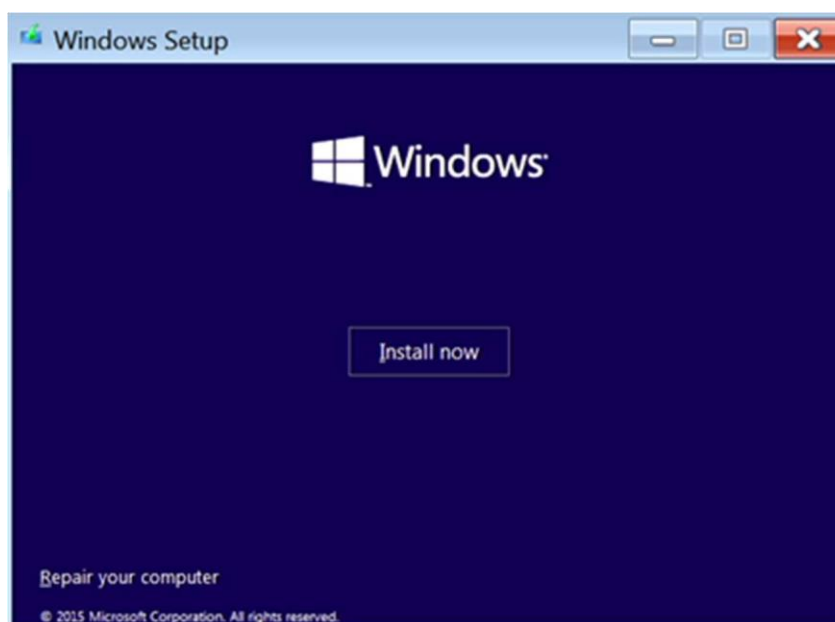
Section 2 – Windows 10 Installation

Follow the steps below to proceed with the Windows 10 installation.

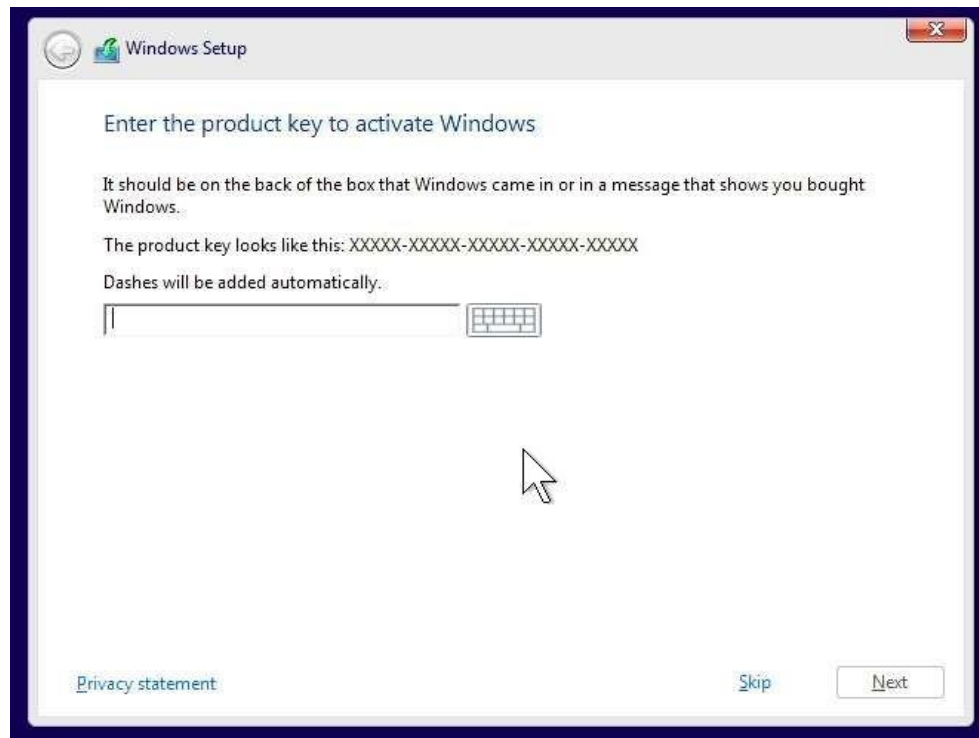
- Select the following Language, Time, and Keyboard Layout and select “Next”.



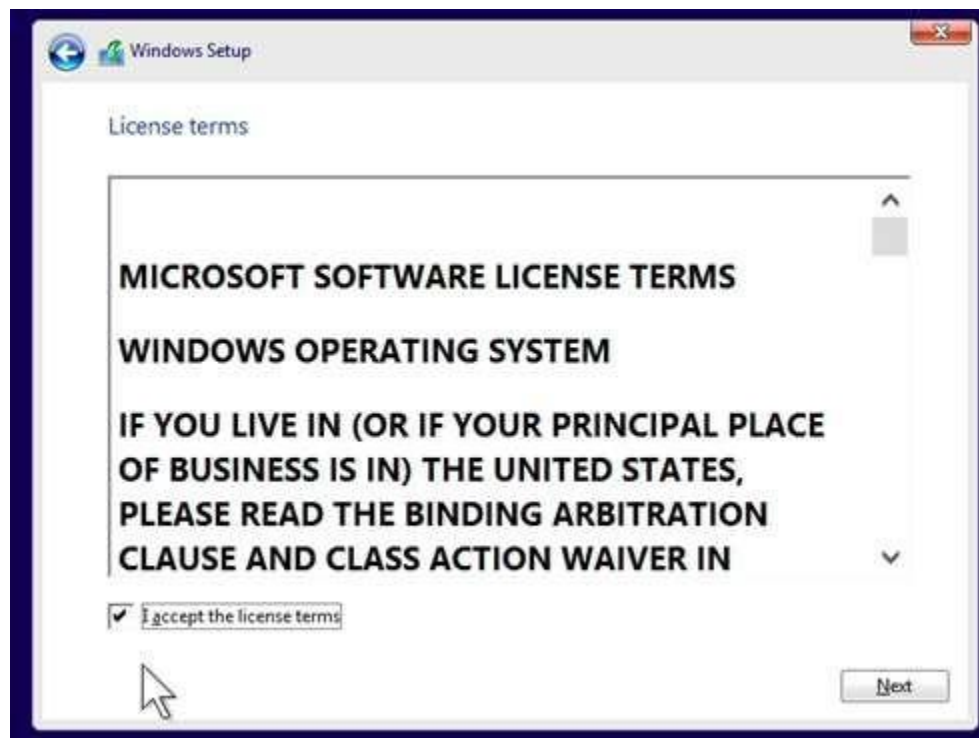
- Select “Install now” option.



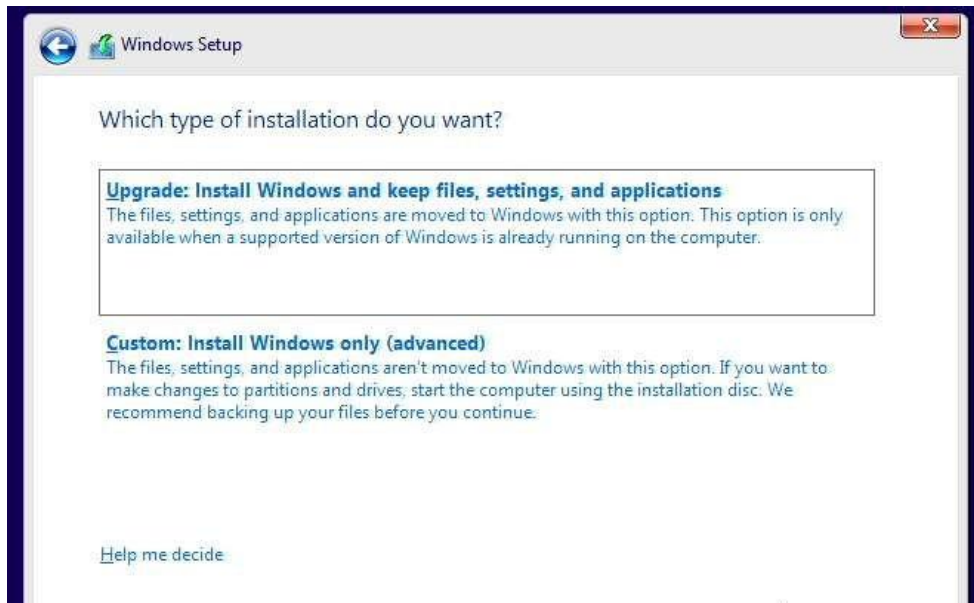
- Enter the product key to activate Windows and press “Next”, or press “Skip” to enter a valid product key later.



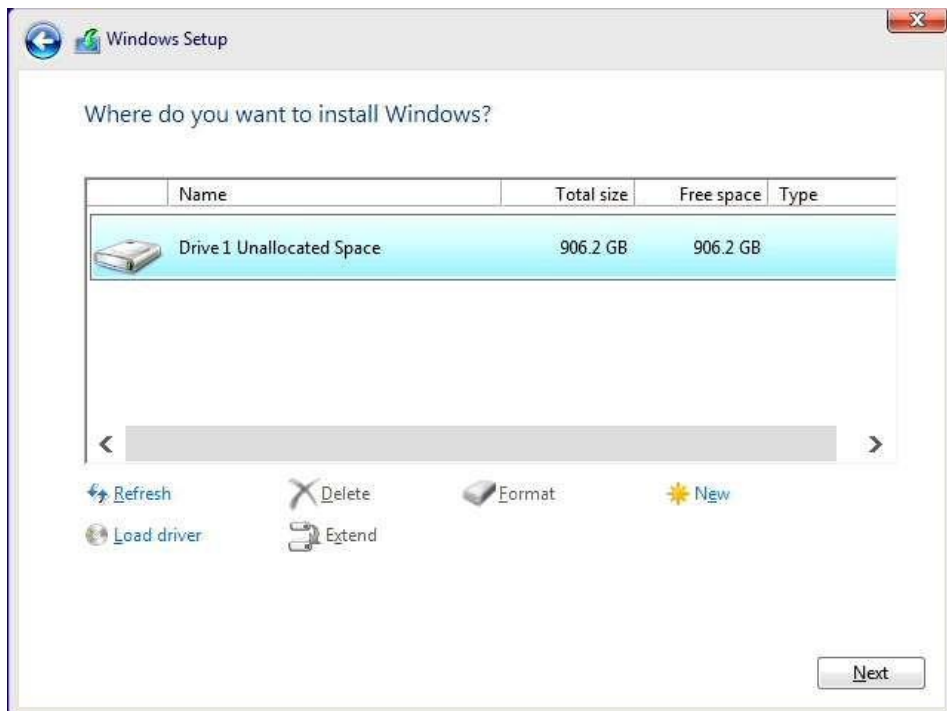
- Check the box next to “I accept the license terms” and select “Next”.



- Choose the type of installation to perform.
- To upgrade to Windows 10 from an earlier version of Windows, select the “Upgrade” option below.
- To perform a clean OS installation, select “Custom: Install Windows only (advanced)” option below. *For instructional purposes, this option was selected below.*



- Select the drive to install Windows to and select “Next” at the bottom.



- Installing Windows screen.



- After the installation completes, the system will automatically reboot into Windows setup for the user to select regional and privacy preferences. The screens for this process can change periodically as newer versions of Windows 10 are released. Make the appropriate personal choices for each option to complete the Windows 10 setup.

- At this point, download and install the appropriate device drivers. At a minimum, these will include the Intel Chipset Device Software driver, the Video adapter driver, and the appropriate Ethernet device driver. Any additional peripherals added to the systems should also be configured with the proper device drivers. The device drivers for all Lenovo systems and peripherals can be found on the Lenovo Support website [here](#).



Section 3 – Revision History

Version	Date	Author	Changes/Updates
1.0	6/1/20	Scott Crowe	Initial launch release