

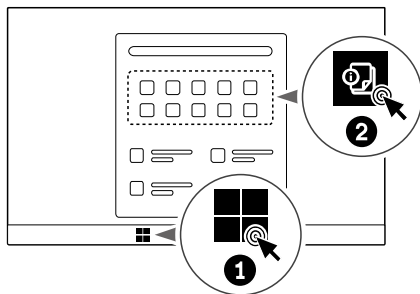
Lenovo ThinkStation

ThinkStation P8 Setup Guide

設置指南 | 設定手冊 | セットアップ・ガイド | 설치 설명서

User Guide Access

访问《用户指南》 | 使用手冊存取 | ユーザー・ガイドへのアクセス | 사용 설명서 액세스

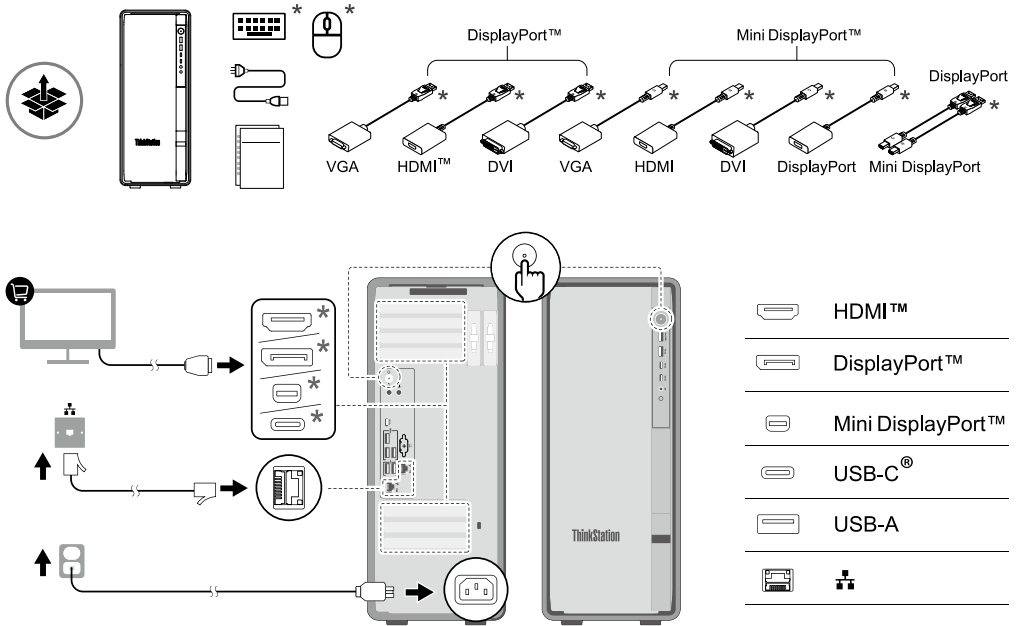


Turn to User Guide for USB transfer rate, how to use key features, and more product information. | 请参阅《用户指南》，了解 USB 传输速率、关键功能的使用以及更多产品信息。 | 請參閱使用手冊以了解 USB 傳輸率、如何使用主要功能，以及更多產品資訊。 | USB 轉送速度、主要機能的使用方法、製品情報については、ユーザー・ガイドをご覧ください。 | USB 전송 속도, 주요 기능 사용 방법 및 추가 제품 정보에 대해 알아보려면 사용 설명서를 참조하십시오.

Lenovo

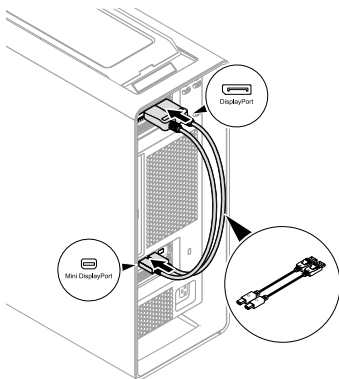
Overview

概览 | 概観 | 概要 | 개요



USB4 PCIe card*

USB4 PCIe 卡* | USB4 PCIe 卡* | USB4 PCIe 카드* | USB4 PCIe 카드*



To use the USB4 PCIe card for display connection, connect it to the graphics card first. | 要使用 USB4 PCIe 卡连接显示器, 请先将其连接到显卡。 | 若要使用 USB4 PCIe 卡连接显示器, 请先将其连接到图形卡。 | USB4 PCIe 카드를 디스플레이 연결에 사용하려면 먼저 그래픽 카드에 연결하십시오.

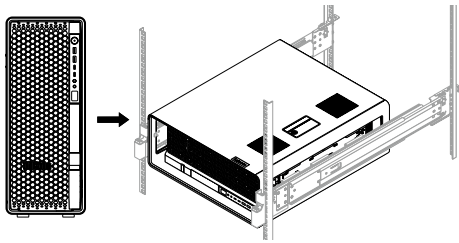
*For selected models | 适用于特定型号 | 選配 | 一部のモデル | 일부 모델의 경우

Key features

关键功能 | 主要功能 | 主な機能 | 주요 기능

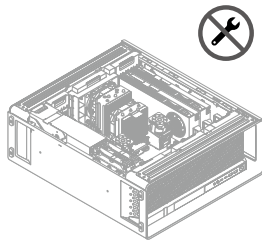
Rack mounted

机架式安装 | 机架装载式 | 랙取り付け | 랙 마운트



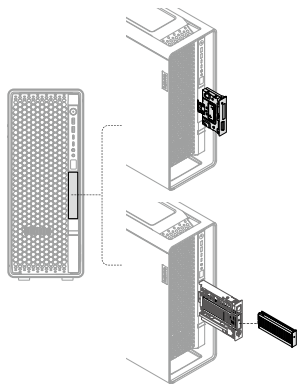
Toolless design

免工具设计 | 免工具設計 | ツールレス設計 | 툴리스 설계



Front-access storage bay*

前置式存储托架* | 前置型儲存裝置機槽* | フロントアクセス・ストレージ・ベイ* | 앞면 액세스 저장 장치 베이*



15-in-1 media card reader*

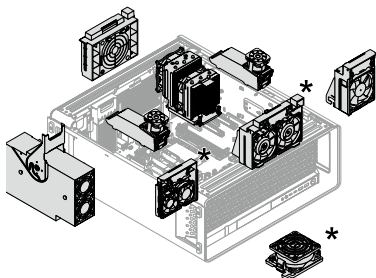
15合1介质卡读取器* | 15合1媒體讀卡機* | 15-in-1 미디어·카드·리더* | 15-in-1 미디어 카드 판독기*

M.2 solid-state drive box*

M.2 固态硬盘驱动器盒* | M.2 固态硬盘盒* | M.2 솔리드 스테이트 드라이브 상자*

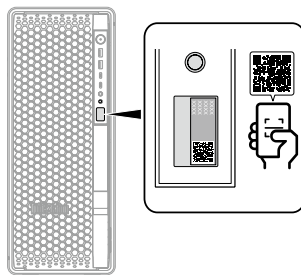
Cooling system

散热系统 | 散熱系統 | 冷却システム | 냉각 시스템



Diagnostics panel

诊断面板 | 診斷面板 | 診断パネル | 진단 패널



*For selected models | 适用于特定型号 | 選配 | 一部のモデル | 일부 모델의 경우

For Barcode Position Only

Printed in China
PN: SP41N93391

Second Edition (March 2025)

© Copyright Lenovo 2025.

LENOVO, LENOVO logo, ThinkStation, and ThinkStation logo are trademarks of Lenovo. DisplayPort is a trademark of the Video Electronics Standards Association. The terms HDMI and HDMI High-Definition Multimedia Interface are trademarks or registered trademarks of HDMI Licensing LLC in the United States and other countries. USB-C is a registered trademark of USB Implementers Forum. All other trademarks are the property of their respective owners.

LIMITED AND RESTRICTED RIGHTS NOTICE: If data or software is delivered pursuant to a General Services Administration "GSA" contract, use, reproduction, or disclosure is subject to restrictions set forth in Contract No. GS-35F-05925.

Reduce

Reuse

Recycle



For FSC Mix logo only