

ThinkCentre M70a/M90a

Setup Guide

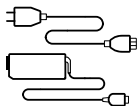
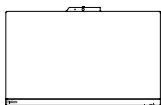
Lenovo

For Barcode Position Only

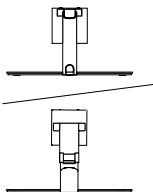
Printed in China

PN:

Initial Setup



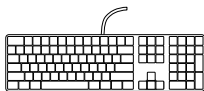
*



*

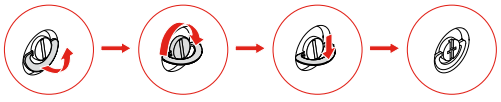
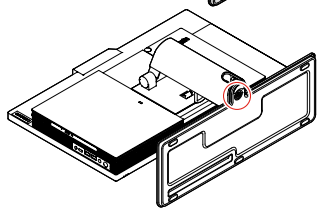
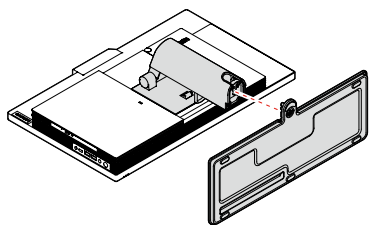


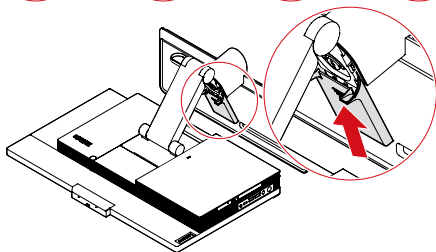
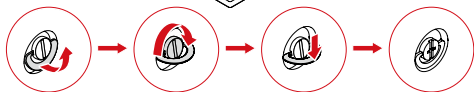
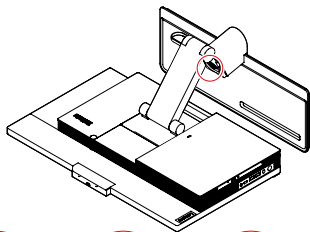
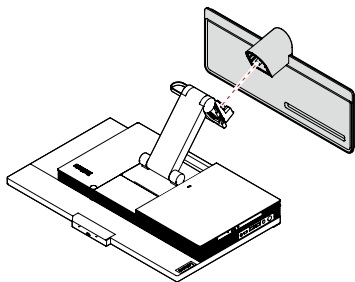
*



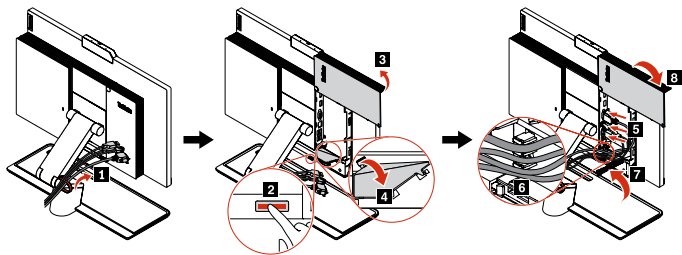
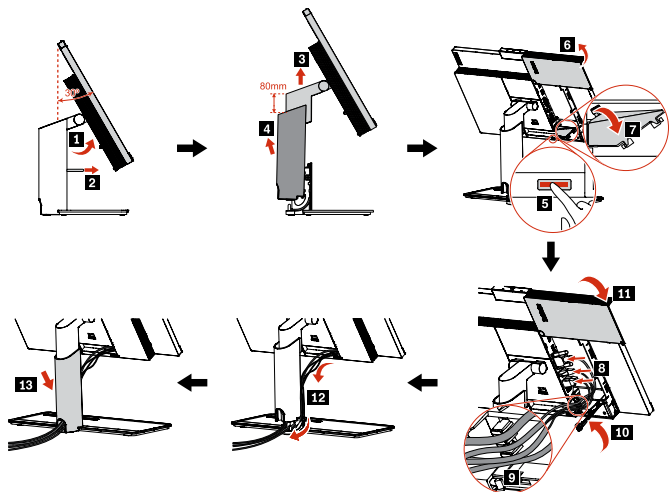
* For selected models

1

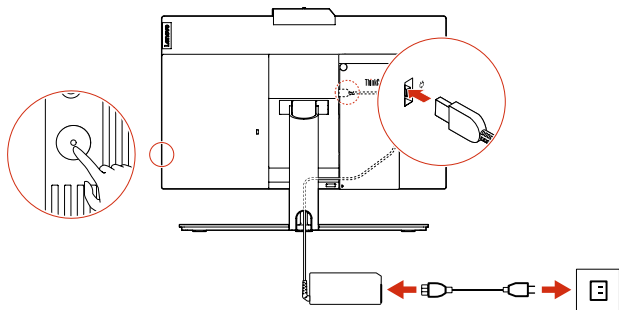




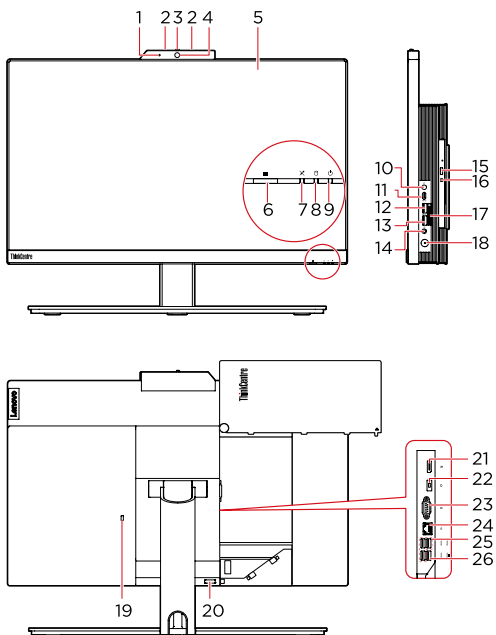
2



3



Overview



- * 1. Integrated camera activity indicator
- * 2. Microphones
- * 3. Integrated camera or IR camera shield
- * 4. Integrated camera or IR camera
- * 5. Multi-touch screen
- * 6. E-privacy button
- * 7. Microphone mute/unmute indicator
- 8. Storage drive activity indicator
- 9. System status indicator
- * 10. Microphone mute/unmute control
- 11. USB-C™ connector (USB 3.2 Gen 1)
- 12. USB 3.2 connector Gen 2
- 13. USB 3.2 connectors Gen 2 (M90a) or USB 3.2 connector Gen 1 (M70a)
- 14. Headset connector
- * 15. Optical drive eject/close button
- * 16. Optical drive activity indicator
- * 17. SD-card slot
- 18. Power button
- 19. Security-lock slot
- 20. Cable cover eject button
- 21. DisplayPort® 1.2 out connector
- 22. Power cord connector
- * 23. Serial connector
- 24. Ethernet connector
- 25. USB 3.2 connectors Gen 1 (3)
- 26. USB 3.2 connector Gen 1 (with keyboard smart power on feature)

 Read the statement on USB transfer rate in the *User Guide*. Refer to the *Safety and Warranty Guide* for accessing the *User Guide*.

Customer Replaceable Units (CRUs)

(CRUs)-dele (Customer Replaceable Units) | Asiakkaan vaihdettavissa olevat osat (CRU-osat) | Deler som kan skiftes ut av kunden (CRUer) | Reservdelar som kunden själv kan byta ut (CRUer)

- Computer stand
- Computer stand base
- Keyboard
 - Memory module
- Mouse
- M.2 solid-state drive
- Optical drive
- Optical drive holder
 - Power adapter
 - Power cord
 - Rear cover
 - System board shield
- Storage drive
 - Storage drive bracket
 - VESA® mount bracket
 - VESA mount bracket cover

Refer to the *User Guide* for CRU definition.

Additional information

European Union (EU) / United Kingdom (UK) – Radio Equipment Compliance

Hereby, Lenovo declares that the radio equipment type ThinkCentre M70a/M90a is in compliance with Directive 2014/53/EU, as well as UK Radio Equipment Regulations SI 2017 No. 1206.

The full text of the system declarations of conformity are available at:

<https://www.lenovo.com/us/en/compliance/eu-doc> for EU and

<https://www.lenovo.com/us/en/compliance/uk-doc> for UK.

This radio equipment operates with the following frequency bands and maximum radio-frequency power:

Technology	Frequency band [MHz]	Maximum transmit power
WLAN 802.11b/g/n/ax	2400 - 2483.5	< 20 dBm
WLAN 802.11a/n/ac/ax	5150 - 5725	< 23 dBm

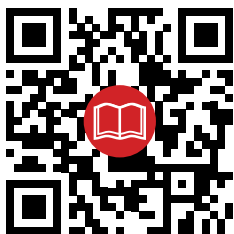
Technology	Frequency band [MHz]	Maximum transmit power
WLAN 802.11a/n/ac/ax	5725 - 5875	< 13.98 dBm
Bluetooth BR/EDR/LE	2400 - 2483.5	< 20 dBm

Usage of this device is limited to indoor use in the WLAN band 5150 - 5350 MHz.

Tip-over hazard prevention notice (for ThinkCentre M90a with E-privacy or full function monitor stand)

This equipment is not suitable for use in locations where children are likely to be present, avoid hurting your child when machine falling down.

LENOVO, LENOVO logo, THINKCENTRE, and THINKCENTRE logo are trademarks of Lenovo. DisplayPort is a trademark of the Video Electronics Standards Association. USB-C is a registered trademark of USB Implementers Forum. All other trademarks are the property of their respective owners. © 2021 Lenovo.



Third Edition (June 2021)

© Copyright Lenovo 2021.

LIMITED AND RESTRICTED RIGHTS NOTICE: If data or software is delivered pursuant to a General Services Administration "GSA" contract, use, reproduction, or disclosure is subject to restrictions set forth in Contract No. GS-35F-05925.

Reduce | Reuse | Recycle

