

Lenovo USB-C Laptop Power Bank

User Guide

Lenovo

Contents

Safety information	1
About the power bank	1
Parts and locations	2
Charge the power bank	3
Charge your computer	3
Charge your mobile device	4
Charge your computer, mobile devices, and power bank	5
Indicators	6
Troubleshooting	7
Specifications	8
Accessibility information	8

Safety information



Batteries supplied by Lenovo® for use with your product have been tested for compatibility and should only be replaced with approved parts. Except for the battery specified by Lenovo, a disassembled or modified battery is not covered by the warranty.

To avoid possible injury, do the following:

- Do not open, disassemble, or service any battery.
- Do not crush or puncture the battery.
- Do not short-circuit the battery, or expose it to water or other liquids.
- Keep the battery away from children.
- Keep the battery away from fire.
- Stop using the battery if it is damaged, or if you notice any discharge or the buildup of foreign materials on the battery leads.
- Do not put the battery in trash that is disposed of in landfills. When disposing of the battery, comply with local laws or regulations.
- Do not attempt to replace the internal rechargeable lithium batteries.
- Replacement of the battery must be done by a Lenovo-authorized repair facility or technician.
- Only recharge the battery strictly according to instructions included in the product documentation.
- Lenovo-authorized repair facilities or technicians recycle Lenovo batteries according to local laws and regulations.

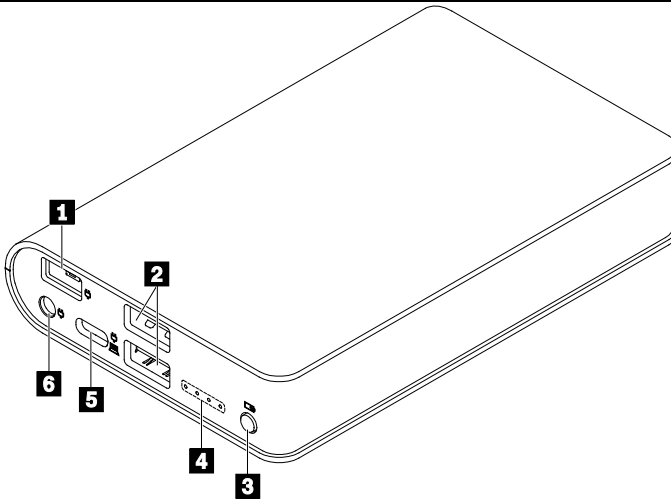
About the power bank

The Lenovo USB-C Laptop Power Bank (referred to as power bank) supplies power to your notebook computer, phone, and other mobile devices.

Your option package includes the following:

- Power bank
- USB-C™ to USB-C cable
- USB-C to slim tip adapter
- Documentation

Parts and locations

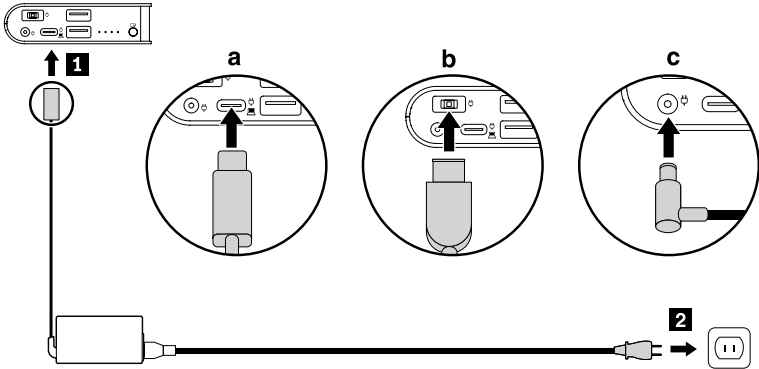


- | | |
|------------------------------|--|
| 1 Slim tip connector | Connect the USB-C power adapter (through the USB-C to slim tip adapter) or slim tip power adapter of your computer. |
| 2 USB 2.0 connectors | Connect to a mobile device. |
| 3 Power button | Press to start charging the connected devices. |
| 4 Indicators | Indicate the power bank status. See Indicators. |
| 5 USB-C connector | Support bi-directional power delivery. Connect to the USB-C power adapter of your computer or a USB-C mobile device. |
| 6 Round tip connector | Connect to the round-tip power adapter of your computer. |

Note: The USB-C, slim tip, or round tip power adapter comes with your computer and is not included in the option package.

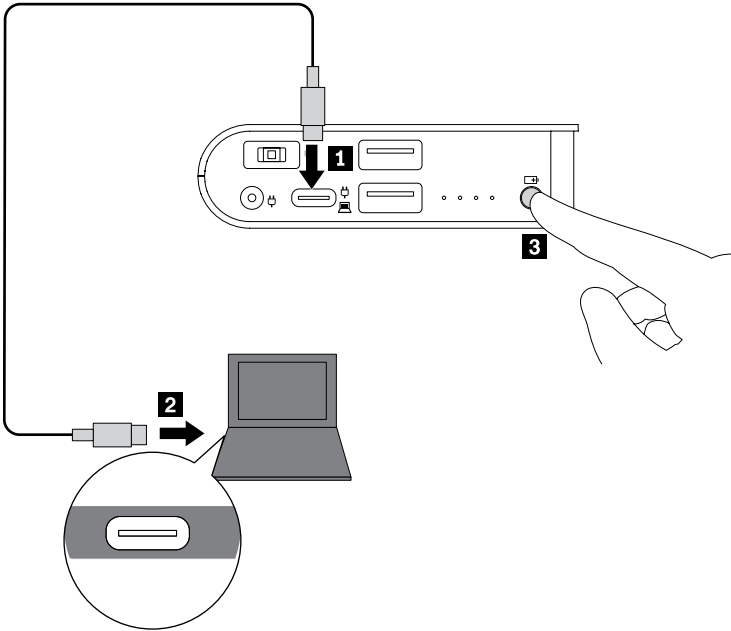
Charge the power bank

Connect the power adapter of your computer to the USB-C, slim tip, or round tip connector on the power bank. Then, connect the power cord to an electrical outlet.

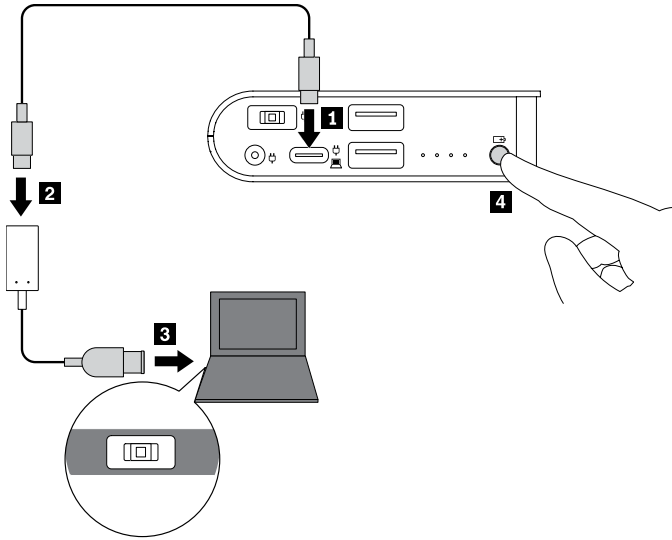


Charge your computer

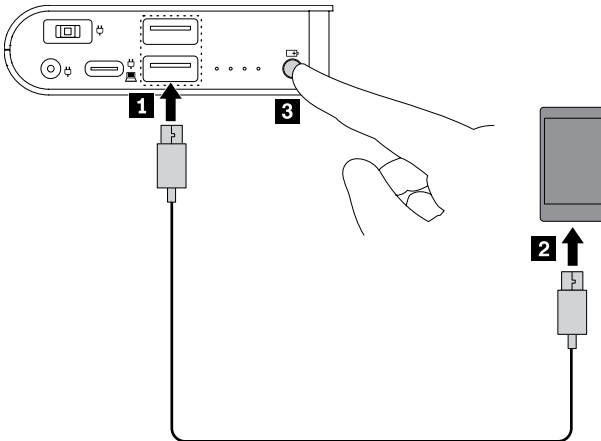
- Through the USB-C connector on your computer:



- Through the slim tip connector on your computer:

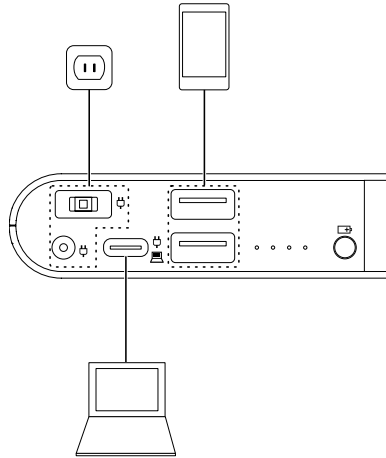


Charge your mobile device



Charge your computer, mobile devices, and power bank

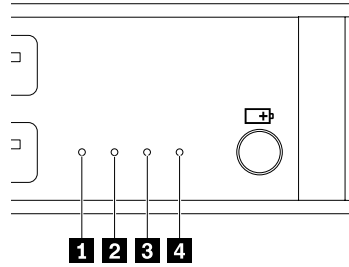
When you connect the power bank to an electrical outlet, you can charge all the connected devices at the same time.



Note: The power bank cannot charge external devices when:

- The battery of the power bank runs out.
- The power bank is in the protection status because the following:
 - The battery of the power bank almost runs out.
 - The power bank is under other fault conditions, such as overheat.

Indicators



Indicators behavior	Power bank status
On	Charging external devices
All off	Out of power
Blinking regularly	Being charged
Blinking in the following order once: <ol style="list-style-type: none"> 1. Indicators 2 and 4 are on. 2. All indicators are on. 3. Indicators 2 and 4 are off. 4. All indicators are off. 	Under protection status because the battery is going to run out.
Blinking in the following order repeatedly: <ol style="list-style-type: none"> 1. Indicators 2 and 4 are on. 2. All indicators are on. 3. Indicators 2 and 4 are off. 4. All indicators are off. 	Under protection status because of other fault conditions, such as overheat.

Troubleshooting

I cannot charge my phone when connected to the USB-C connector on the power bank.

Do the following:

1. Make sure the power bank and your phone are turned on.
2. Reconnect your phone to the power bank.
3. If the problem still exists, connect your phone to the USB 2.0 connector on the power bank with the USB-C to USB-A cable that comes with your phone.

I cannot charge the power bank.

Use the Lenovo power adapter shipped with your Lenovo computer to charge the power bank.

The four indicators of the power bank blink in a certain order once or repeatedly, and I cannot charge external devices.

The indicators behavior indicates that the power bank is in the protection status. See Indicators.

To solve the problem:

- If the four indicators blink in a certain order only once, charge the power bank.
- If the four indicators blink in a certain order repeatedly:
 1. Disconnect all external devices from the power bank. Wait for several minutes for the power bank to cool. Then, the power bank will recover to a normal status.
 2. Reconnect external devices to check if the problem is solved.
 3. If the power bank still cannot charge external devices, press and hold the power button for 20 seconds to reset the power bank.

Specifications

Connector or cable	Requirement
Slim tip connector	Input: 20 V dc / 45 W minimum
Round tip connector	Input: 20 V dc / 45 W minimum
USB-C connector	Input: 5 V–20 V dc, 5 W–45 W Output: 5 V dc / 3 A, 9 V dc / 3 A, 15 V dc / 3 A, 20 V dc / 2.25 A
Two USB 2.0 connectors	Total output: 5 V dc / 2.1 A maximum
USB-C to slim tip adapter	Input: 20 V dc / 45 W minimum Output: 20 V dc / 45 W

Accessibility information

Documentation in accessible formats

Lenovo provides electronic documentation in accessible formats, such as properly tagged PDF files or HyperText Markup Language (HTML) files. Lenovo electronic documentation is developed to ensure that visually impaired users can read the documentation through a screen reader. Each image in the documentation also includes adequate alternative text to explain the image so that visually impaired users can understand the image when they use a screen reader.

To open and view PDF files, your computer must have the Adobe Reader program installed. The Adobe Reader program also is available for download at:

<http://www.adobe.com>

Second Edition (October 2018)

© Copyright Lenovo 2018.

LENOVO and the LENOVO logo are trademarks of Lenovo.

USB-C is a trademark of USB Implementers Forum.

All other trademarks are the property of their respective owners. © 2018 Lenovo.

LIMITED AND RESTRICTED RIGHTS NOTICE: If data or software is delivered pursuant to a General Services Administration "GSA" contract, use, reproduction, or disclosure is subject to restrictions set forth in Contract No. GS-35F-05925.



SP40C84146