

**ThinkPad**<sup>®</sup> X390

# Setup Guide

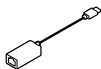
**Lenovo**

For Barcode Position Only

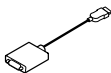
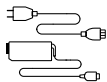
Printed in China  
PN: SPXXXXXXX

# Unpack

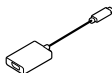
---



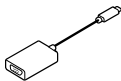
- \* ThinkPad Ethernet Extension Adapter Gen 2



- \* Lenovo HDMI to VGA Adapter



- \* Lenovo USB-C to DisplayPort Adapter

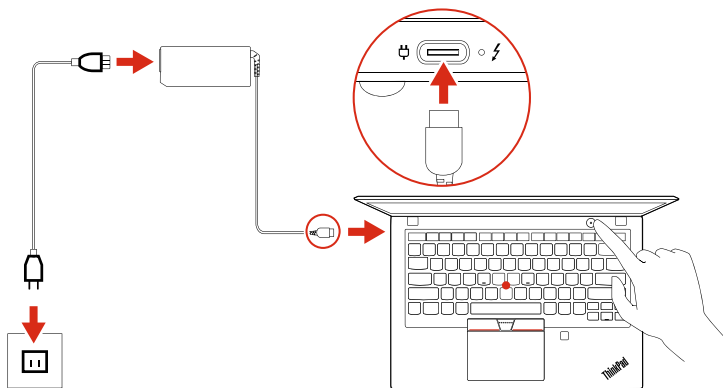


- \* Lenovo USB-C to VGA Adapter

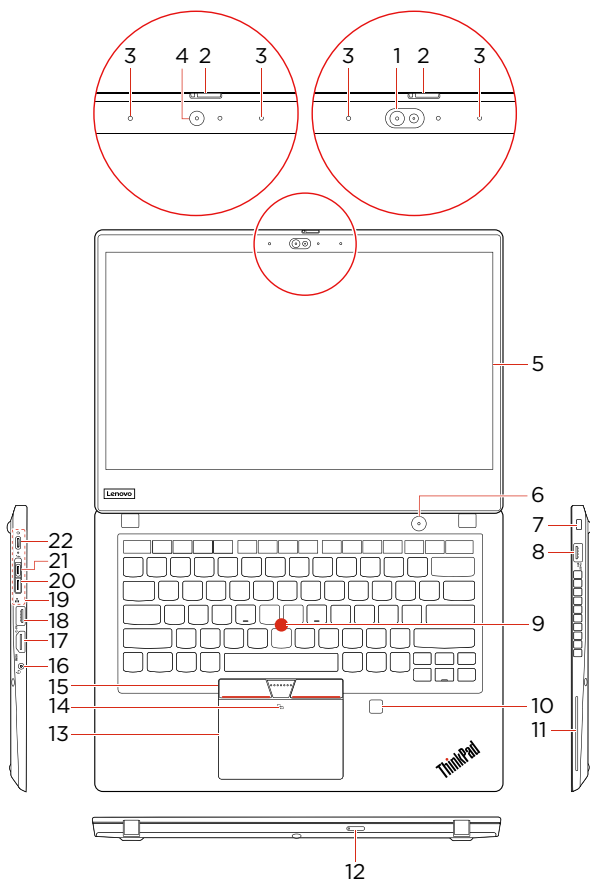
- \* For selected models

# Initial Setup

---



# Overview



- \* 1. Infrared camera
- \* 2. ThinkShutter
- \* 3. Microphones
- \* 4. Camera
- \* 5. Multi-touch screen
- 6. Power button
- 7. Security-lock slot
- 8. Always On USB 3.1 connector Gen 1
- 9. TrackPoint® pointing stick
- \* 10. Fingerprint reader
- \* 11. Smart card slot
- 12. Nano-SIM-card and microSD-card slot
- 13. Trackpad
- \* 14. NFC mark
- 15. TrackPoint buttons
- 16. Audio connector
- 17. HDMI™ connector
- 18. USB 3.1 connector Gen 1
- 19. Docking station connector
- 20. Ethernet extension connector Gen 2
- 21. Thunderbolt™ 3 connector (USB-C)
- 22. USB-C™ connector (USB 3.1 Gen 1)

\* For selected models

 Read the statement on USB transfer rate in the *User Guide*. Refer to the *Safety and Warranty Guide* for accessing the *User Guide*.

# Customer Replacement Units (CRUs)

---

- ac power adapter
- Power cord
- Base cover assembly
- M.2 solid-state drive
- M.2 solid-state drive bracket
- Nano-SIM-card and microSD-card tray
- Keyboard
- \* • Wireless WWAN card

\* For selected models

Refer to the *User Guide* for CRU definition.

# Additional information

## European Union – compliance with the Radio Equipment Directive

Hereby, Lenovo (Singapore) Pte. Ltd., declares that the radio equipment type ThinkPad X390 is in compliance with Directive 2014/53/EU.

The full text of the system EU declaration of conformity and the EU wireless module declarations are available at the following Internet addresses:

- For notebook computers:  
<https://www.lenovo.com/eu-doc-notebooks>
- For tablets:  
<https://www.lenovo.com/eu-doc-tablets>

This radio equipment operates with the following frequency bands and maximum radio-frequency power:

Technology	Frequency band [MHz]	Maximum transmit power
WLAN 802.11b/g/n/ax	2400 - 2483.5	< 20 dBm

Technology	Frequency band [MHz]	Maximum transmit power
WLAN 802.11a/n/ac/a x	5150 - 5725	< 23 dBm
WLAN 802.11a/n/ac/a x	5725 - 5875	< 13.98 dBm
Bluetooth BR/EDR/LE	2400 - 2483.5	< 20 dBm
WWAN UMTS	1/8	< 24.5 dBm
WWAN LTE	1/3/7/8/20 /28	< 24 dBm
NFC	13.56	< -5.31 dBμA/m @10m

•



---

**Third Edition (December 2019)**

**© Copyright Lenovo 2019.**

LIMITED AND RESTRICTED RIGHTS NOTICE: If data or software is delivered pursuant to a General Services Administration "GSA" contract, use, reproduction, or disclosure is subject to restrictions set forth in Contract No. GS-35F-05925.

**Reduce | Reuse | Recycle**

