

# ThinkPad® X380 Yoga

## Setup Guide

Setup Guide

Setup Guide

Setup Guide

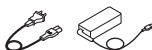
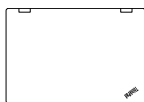
Setup Guide

Setup Guide

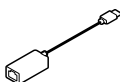
**Lenovo™**

## Unpack | Unpack | Unpack | Unpack | Unpack

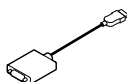
Standard items | Standard items | Standard items | Standard items | Standard items | Standard items



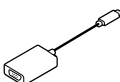
Optional accessories | Optional accessories | Optional accessories | Optional accessories | Optional accessories | Optional accessories



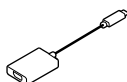
ThinkPad Ethernet Extension Adapter \*



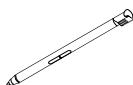
Lenovo HDMI to VGA Adapter \*



Lenovo USB-C to VGA Adapter \*



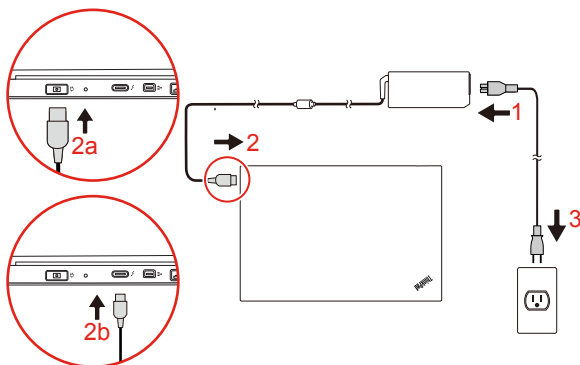
Lenovo USB-C to DisplayPort Adapter \*



ThinkPad Pen Pro \*

\* Available on some models | Available on some models | Available on some models | Available on some models | Available on some models

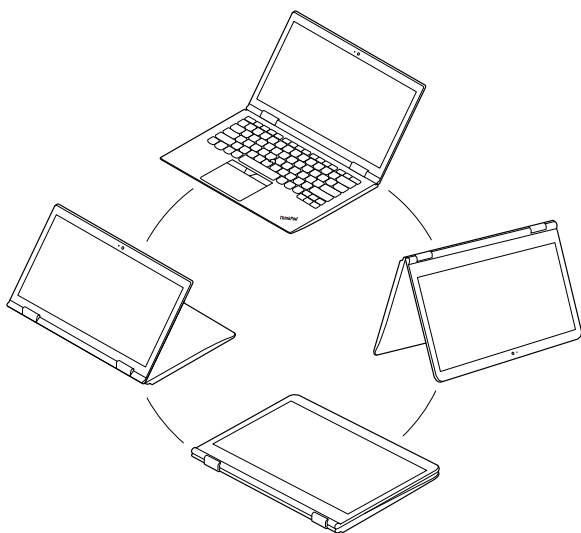
## Initial setup | Initial setup | Initial setup | Initial setup | Initial setup | Initial setup

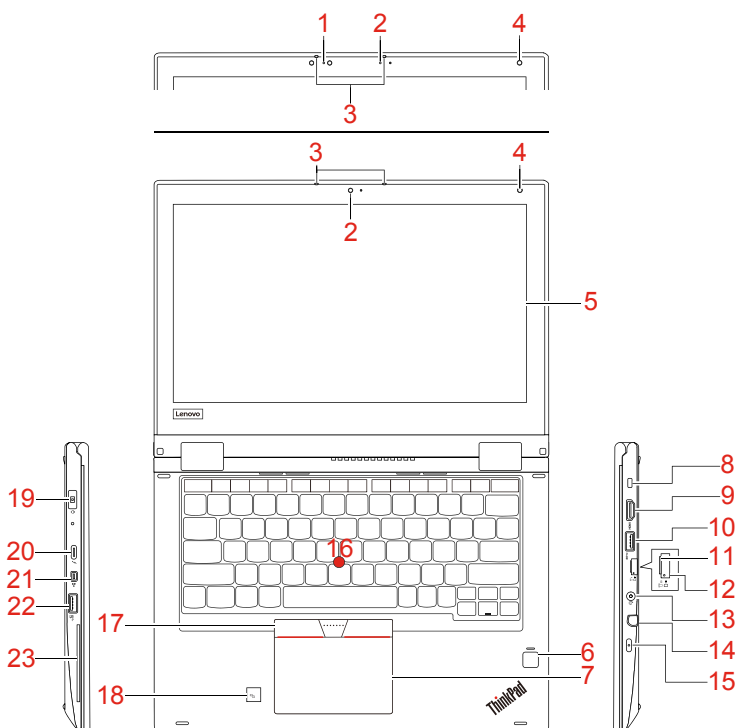




Your computer has a rise-and-fall keyboard mechanism that works with the four operating modes: Notebook mode, Tent mode, Tablet mode, and Stand mode.

**Note:** Before storing the computer, put the computer to Notebook mode and close the computer display.





[English]

- |                             |  |
|-----------------------------|--|
| 1. Infrared camera *        | 2. Conventional camera *               |
| 3. Microphones *            | 4. Ambient light sensor                |
| 5. Multi-touch screen *     | 6. Fingerprint reader                  |
| 7. Trackpad                 | 8. Mini security-lock slot             |
| 9. HDMI™ connector          | 10. USB 3.0 connector                  |
| 11. MicroSD card slot       | 12. Nano-SIM-card tray *               |
| 13. Audio connector         | 14. ThinkPad Pen Pro *                 |
| 15. Power button            | 16. TrackPoint® pointing stick         |
| 17. TrackPoint buttons      | 18. NFC mark *                         |
| 19. Power connector         | 20. USB-C™ (Thunderbolt™ 3 compatible) |
| 21. Mini Ethernet connector | 22. Always On USB 3.0 connector        |
| 23. Smart-card slot *       |  |

\* Available on some models

## Compliance with the EU Radio Equipment Directive

The following applies to models with a radio device.

Hereby, Lenovo (Singapore) Pte. Ltd., declares that the radio equipment type ThinkPad X380 Yoga is in compliance with Directive 2014/53/EU.

Refer to the *Safety and Warranty Guide* for further information regarding EU regulatory compliance.

### Specific Absorption Rate (ICNIRP)

**YOUR DEVICE MEETS INTERNATIONAL GUIDELINES FOR EXPOSURE TO RADIO WAVES.**

Your device is a radio transmitter and receiver. It is designed not to exceed the limits for exposure to radio waves (radio frequency electromagnetic fields) recommended by international guidelines. The guidelines were developed by an independent scientific organization (ICNIRP) and include a substantial safety margin designed to assure the safety of all persons, regardless of age and health.

The radio wave exposure guidelines use a unit of measurement known as the Specific Absorption Rate, or SAR. The Europe 10g SAR limit for mobile devices is 2.0 W/kg. Tests for SAR are conducted using standard operating positions with the device transmitting at its highest certified power level in all tested frequency bands. The highest SAR values under the ICNIRP guidelines for your device are as follows:

**Maximum body-worn SAR:** 1.26 W/kg

During use, the actual SAR values for your device are usually well below the values stated. This is because, for purposes of system efficiency and to minimize interference on the network, the operating power of your mobile device is automatically decreased when full power is not needed for the data connection. The lower the power output of the device, the lower its SAR value.

If you are interested in further reducing your RF exposure then you can easily do so by limiting your usage or simply keeping the device away from the body.

---

**First Edition (January 2018)**

**© Copyright Lenovo 2018.**

LIMITED AND RESTRICTED RIGHTS NOTICE: If data or software is delivered pursuant to a General Services Administration "GSA" contract, use, reproduction, or disclosure is subject to restrictions set forth in Contract No. GS-35F-05925.

For Barcode Position Only

Printed in China  
PN: SP40P03558

**Reduce | Reuse | Recycle**

