

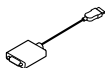
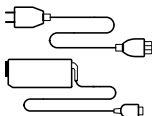
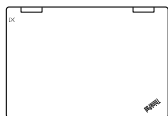
ThinkPad X1 YOGA

Setup Guide



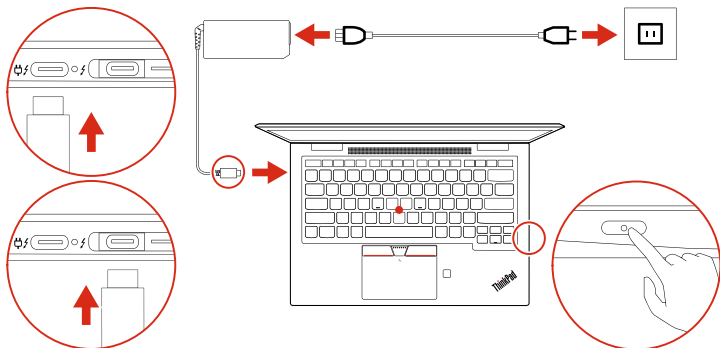
Lenovo

Initial Setup



* Lenovo HDMI to VGA
Adapter Cable

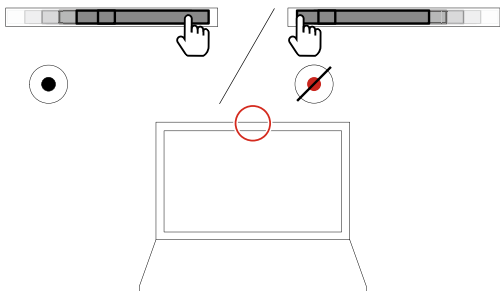
* ThinkPad Ethernet
Extension Adapter Gen 2



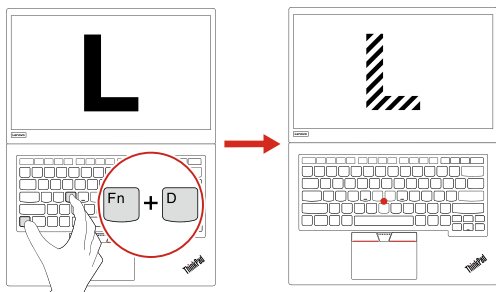
* For selected models

Features

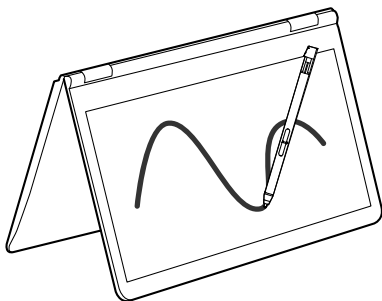
ThinkShutter



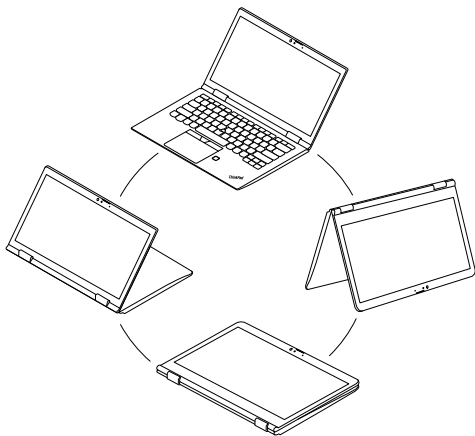
Privacy Guard *



ThinkPad Pen Pro

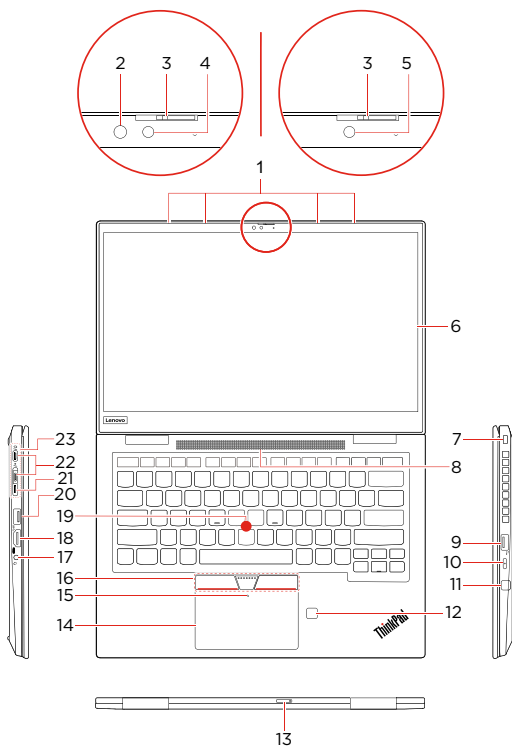


YOGA Modes



* For selected models

Overview



1. Microphones
- * 2. Infrared LED
3. ThinkShutter
- * 4. Camera with IR function
5. Camera
6. Multi-touch screen
7. Mini security-lock slot
8. Speaker
9. Always On USB 3.1 connector Gen 1
10. Power button
11. ThinkPad Pen Pro
12. Fingerprint reader
- * 13. Nano-SIM-card tray
14. Trackpad
- * 15. NFC mark
16. TrackPoint® buttons
17. Audio connector
18. HDMI™ connector
19. TrackPoint pointing stick
20. USB 3.1 connector Gen 1
21. Ethernet extension connector Gen 2
22. Thunderbolt 3 connectors (USB-C™)
23. Docking-station connector

* For selected models

 Read the statement on USB transfer rate in the *User Guide*. Refer to the *Safety and Warranty Guide* for accessing the *User Guide*.

Customer Replacement Units (CRUs)

- ac power adapter
- Base cover assembly
- * • M.2 solid-state drive
- * • Nano-SIM card tray
- Pointing-stick nonslip cap
- Power cord
- * • Thermal pad
- ThinkPad Pen Pro
- Pen charger
- * • Wireless WAN card

* for selected models

Refer to the *User Guide* for CRU definition.

Additional information

Specific Absorption Rate (ICNIRP)

YOUR DEVICE MEETS INTERNATIONAL GUIDELINES FOR EXPOSURE TO RADIO WAVES.

Your device is a radio transmitter and receiver. It is designed not to exceed the limits for exposure to radio waves (radio frequency electromagnetic fields) recommended by international guidelines.

The guidelines were developed by an independent scientific organization (ICNIRP) and include a substantial safety margin designed to assure the safety of all persons, regardless of age and health.

The radio wave exposure guidelines use a unit of measurement known as the Specific Absorption Rate, or SAR. The Europe 10g SAR limit for mobile devices is 2.0 W/kg. Tests for SAR are conducted using standard operating positions with the device transmitting at its highest certified power level in all tested frequency bands. The highest SAR values under the ICNIRP guidelines for your device are as follows:

Maximum body-worn SAR with 0 mm separation distance: 1.571 W/kg

During use, the actual SAR values for your device are usually well below the values stated. This is because, for purposes of system efficiency and to minimize interference on the network, the operating power of your mobile device is automatically decreased when full power is not needed for the data connection. The lower the power output of the device, the lower its SAR value.

If you are interested in further reducing your RF exposure then you can easily do so by limiting your usage or simply keeping the device away from the body.

European Union — compliance with the Radio Equipment Directive

Hereby, Lenovo (Singapore) Pte. Ltd., declares that the radio equipment type ThinkPad X1 Yoga is in compliance with Directive 2014/53/EU.

The full text of the system EU declaration of conformity and the EU wireless module declarations are available at the following Internet addresses:

- For notebook computers:
<https://www.lenovo.com/eu-doc-notebooks>
- For tablets:
<https://www.lenovo.com/eu-doc-tablets>

This radio equipment operates with the following frequency bands and maximum radio-frequency power:

Technology	Frequency band [MHz]	Maximum transmit power
WLAN 802.11b/g/n	2400 - 2483.5	< 20 dBm
WLAN 802.11a/n/ac	5150 - 5725	< 23 dBm
WLAN 802.11a/n/ac	5725 - 5875	< 13.98 dBm
Bluetooth BR/EDR/LE	2400 - 2483.5	< 20 dBm
WWAN UMTS	1/8	< 24.5 dBm
WWAN LTE	1/3/7/8/20/28/38/40/42	< 24 dBm
NFC	13.56	< -5.31 dBμA/m @10m



Second Edition (January 2020)

© Copyright Lenovo 2020.

LIMITED AND RESTRICTED RIGHTS NOTICE: If data or software is delivered pursuant to a General Services Administration "GSA" contract, use, reproduction, or disclosure is subject to restrictions set forth in Contract No. GS-35F-05925.

Reduce | Reuse | Recycle



For Barcode Position Only

Printed in China
PN: xxxxxxxxxx