

ThinkPad X13 Yoga Gen 1

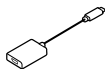
Setup Guide

Lenovo

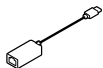
For Barcode Position Only

Printed in China

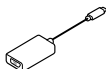
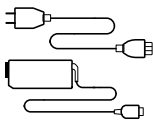
Unpack



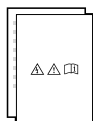
- * Lenovo USB-C to DisplayPort Adapter



- * ThinkPad Ethernet Extension Adapter Gen 2

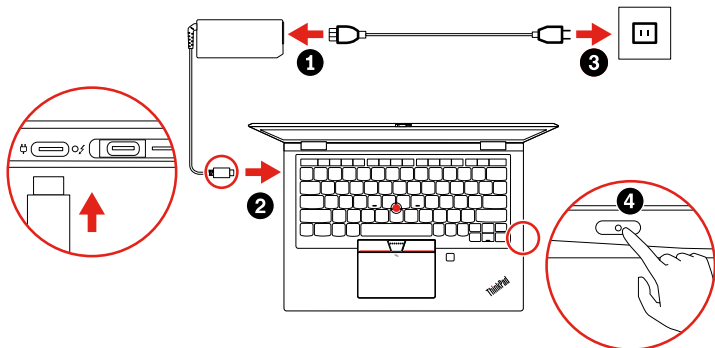


- * Lenovo USB-C to VGA Adapter

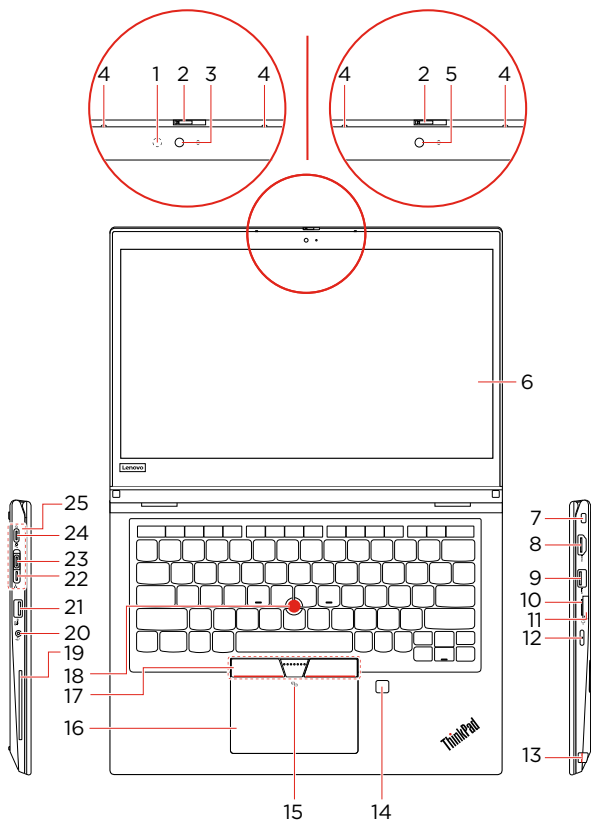


- * Lenovo HDMI to VGA Adapter

Initial Setup



Overview



- * 1. Infrared (IR) LED
2. ThinkShutter
- * 3. Camera with IR function
4. Microphones
- * 5. Camera
6. Multi-touch screen
7. Security-lock slot
8. HDMI™ connector
9. USB 3.2 connector Gen 1
10. microSD card slot
- * 11. Nano-SIM card slot
12. Power button
13. ThinkPad Pen Pro
14. Fingerprint reader
- * 15. NFC mark
16. Trackpad
17. TrackPoint® buttons
18. TrackPoint pointing stick
- * 19. Smart-card slot
20. Audio connector
21. Always On USB 3.2 connector Gen 1
22. Ethernet extension connector Gen 2
23. Thunderbolt™ 3 connector (USB-C)
24. USB-C™ connector (USB 3.2 Gen 1)
25. Docking-station connector

i Read the statement on USB transfer rate in the *User Guide*. Refer to the *Safety and Warranty Guide* for accessing the *User Guide*.

Customer Replaceable Units (CRUs)

- ac power adapter
- Power cord
- * • Nano-SIM card tray
- ThinkPad Pen Pro
- Base cover assembly
- * • M.2 solid-state drive
- * • M.2 solid-state drive bracket
- * • Wireless WAN card

Refer to the *User Guide* for CRU definition.

Additional information

Specific absorption rate for European Union

YOUR DEVICE MEETS INTERNATIONAL GUIDELINES FOR EXPOSURE TO RADIO WAVES.

The Europe 10g Specific Absorption Rate (SAR) limit for mobile devices is 2.0 W/kg. To view your product specific SAR value, go to <https://support.lenovo.com/us/en/solutions/sar>.

If you are interested in further reducing your RF exposure then you can easily do so by limiting your usage or simply keeping the device away from the body.

European Union – compliance with the Radio Equipment Directive

Hereby, Lenovo (Singapore) Pte. Ltd., declares that the radio equipment type ThinkPad X13 Yoga Gen 1 is in compliance with Directive 2014/53/EU.

The full text of the system EU declaration of conformity is available at the following Internet address:

<https://www.lenovo.com/us/en/compliance/eu-doc>

This radio equipment operates with the following frequency bands and maximum radio-frequency power:

Technology	Frequency band [MHz]	Maximum transmit power
WLAN 802.11b/g/n/ax	2400 - 2483.5	< 20 dBm
WLAN 802.11a/n/ac/ax	5150 - 5725	< 23 dBm
WLAN 802.11a/n/ac/ax	5725 - 5875	< 13.98 dBm
Bluetooth BR/EDR/LE	2400 - 2483.5	< 20 dBm
WWAN UMTS	1/8	< 24.5 dBm
WWAN LTE	1/3/7/8/20/28	< 24 dBm
WWAN LTE	38/40/42	< 24 dBm
NFC	13.56	< -5.31 dBμA/m @10m

Usage of all the radio devices is limited to indoor in the band 5150 MHz to 5350 MHz (channels 36, 40, 44, 48, 52, 56, 60, 64).



First Edition (April 2020)

© Copyright Lenovo 2020.

LIMITED AND RESTRICTED RIGHTS NOTICE: If data or software is delivered pursuant to a General Services Administration "GSA" contract, use, reproduction, or disclosure is subject to restrictions set forth in Contract No. GS-35F-05925.

Reduce | Reuse | Recycle

