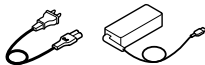


ThinkPad® P1 and X1 Extreme

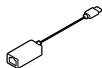
Setup Guide

Unpack

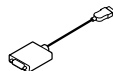
Standard items



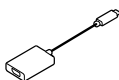
Optional accessories



ThinkPad Ethernet Extension Adapter *



Lenovo HDMI to VGA Adapter *



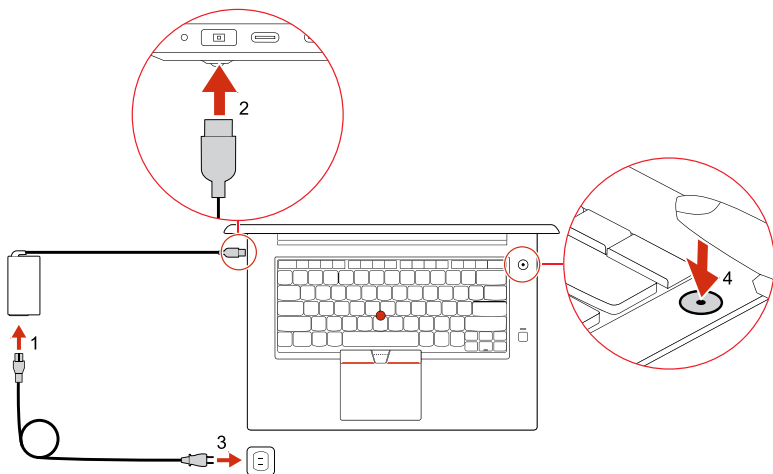
Lenovo USB-C to DisplayPort Adapter *



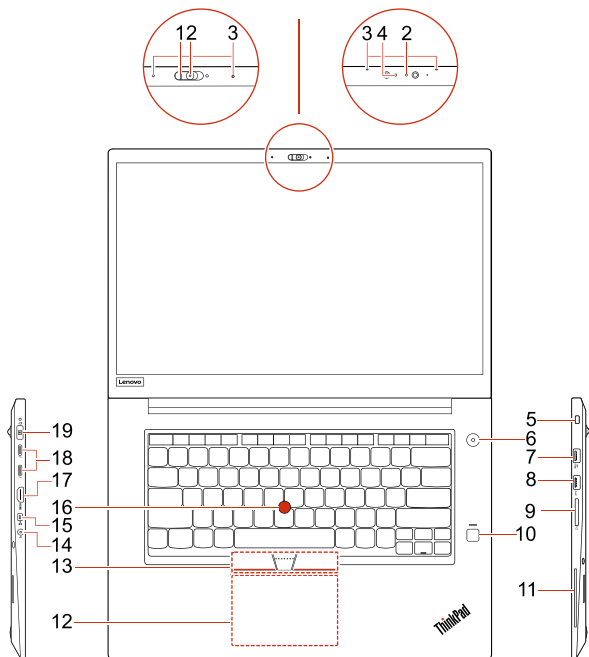
Lenovo Pen Pro, Pen Holder, USB-C Cable *

* Available on some models

Initial setup



Overview



[English]

- | | |
|--------------------------------------|---|
| 1. ThinkShutter * | 2. Conventional camera * |
| 3. Microphones | 4. Infrared camera * |
| 5. Security-lock slot | 6. Power button |
| 7. Always On USB 3.1 connector Gen 1 | 8. USB 3.1 connector Gen 1 |
| 9. Media-card slot | 10. Fingerprint reader |
| 11. Smart-card slot * | 12. Trackpad |
| 13. TrackPoint® buttons | 14. Audio connector |
| 15. Mini Ethernet connector | 16. TrackPoint pointing stick |
| 17. HDMI™ connector | 18. USB-C connectors (Thunderbolt 3 compatible) |
| 19. Power connector | |

* Available on some models

ⓘ Read the statement on USB transfer rate in the *User Guide*. Refer to the *Safety and Warranty Guide* for accessing the *User Guide*.



Regulatory labels

Depending on your country or region, government-required regulatory information is provided through one of the following methods:

- On a physical label attached to the outside of your computer shipping carton
- On a physical label attached to your computer
- Through an electronic-label screen (E-label screen) preinstalled on your computer

To access the E-label screen, do one of the following:

- Restart the computer. When the logo screen is displayed, press F9. The E-label screen is displayed.
- Restart the computer. When the logo screen is displayed, press Enter or tap the prompt to enter the Startup Interrupt menu. Then press F9 or tap the Regulatory Information option. The E-label screen is displayed.

European Union — compliance with the Radio Equipment Directive

Hereby, Lenovo (Singapore) Pte. Ltd., declares that the radio equipment types ThinkPad P1 and X1 Extreme are in compliance with Directive 2014/53/EU.

The full text of the system EU declaration of conformity and the EU wireless module declarations are available at the following Internet addresses:

- For notebook computers:
<https://www.lenovo.com/eu-doc-notebooks>
- For tablets:
<https://www.lenovo.com/eu-doc-tablets>

This radio equipment operates with the following frequency bands and maximum radio-frequency power:

Technology	Frequency band [MHz]	Maximum transmit power
WLAN 802.11b/g/n	2400 - 2483.5	< 20 dBm
WLAN 802.11a/n/ac	5150 - 5725	< 23 dBm
WLAN 802.11a/n/ac	5725 - 5875	< 13.98 dBm
Bluetooth BR/EDR/LE	2400 - 2483.5	< 20 dBm

Specific Absorption Rate (ICNIRP)

YOUR DEVICE MEETS INTERNATIONAL GUIDELINES FOR EXPOSURE TO RADIO WAVES.

Your device is a radio transmitter and receiver. It is designed not to exceed the limits for exposure to radio waves (radio frequency electromagnetic fields) recommended by international guidelines. The guidelines were developed by an independent scientific organization (ICNIRP) and include a substantial safety margin designed to assure the safety of all persons, regardless of age and health.

The radio wave exposure guidelines use a unit of measurement known as the Specific Absorption Rate, or SAR. The Europe 10g SAR limit for mobile devices is 2.0 W/kg. Tests for SAR are conducted using standard operating positions with the device transmitting at its highest certified power level in all tested frequency bands. The highest SAR values under the ICNIRP guidelines for your device are as follows:

Maximum body-worn SAR with 0 mm separation distance: 0.193 W/kg

During use, the actual SAR values for your device are usually well below the values stated. This is because, for purposes of system efficiency and to minimize interference on the network, the operating power of your mobile device is automatically decreased when full power is not needed for the data connection. The lower the power output of the device, the lower its SAR value.

If you are interested in further reducing your RF exposure then you can easily do so by limiting your usage or simply keeping the device away from the body.

Second Edition (June 2019)
© Copyright Lenovo 2019.

LIMITED AND RESTRICTED RIGHTS NOTICE: If data or software is delivered pursuant to a General Services Administration "GSA" contract, use, reproduction, or disclosure is subject to restrictions set forth in Contract No. GS-35F-05925.

Reduce | Reuse | Recycle

