

**ThinkPad**<sup>®</sup> T590/P53s

# Setup Guide

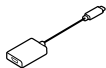
For Barcode Position Only

Printed in China

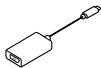
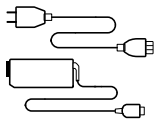
**Lenovo**

# Unpack

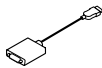
---



\* Lenovo USB-C to DisplayPort Adapter



\* Lenovo USB-C to VGA Adapter

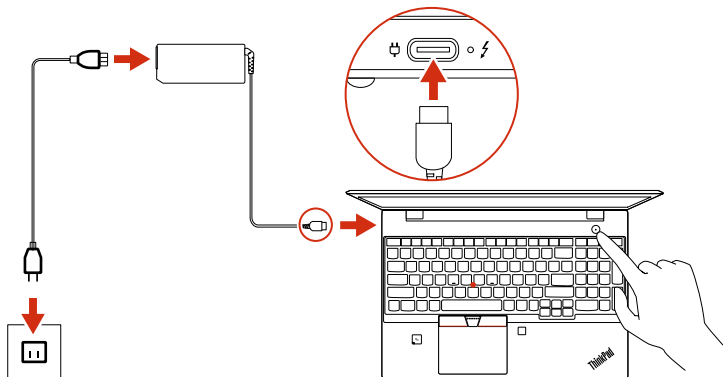


\* Lenovo HDMI to VGA Adapter

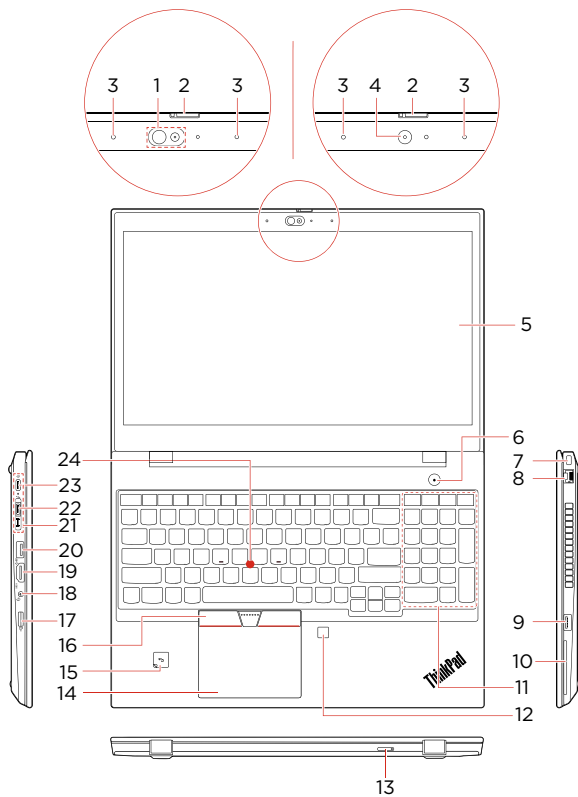
\* For selected models

# Initial Setup

---



# Overview



# Overview

---

- \* 1. Infrared camera
- \* 2. ThinkShutter
- 3. Microphones
- \* 4. Camera
- \* 5. Multi-touch screen
- 6. Power button
- 7. Security-lock slot
- 8. Ethernet connector
- 9. Always On USB 3.1 connector Gen 1
- \* 10. Smart card slot
- 11. Numeric keypad
- \* 12. Fingerprint reader
- \* 13. Nano-SIM-card slot
- 14. Trackpad
- \* 15. NFC label
- 16. TrackPoint® buttons
- 17. microSD card slot
- 18. Audio connector
- 19. HDMI™ connector
- 20. USB 3.1 connector Gen 1
- 21. Docking-station connector
- 22. Thunderbolt™ 3 connector (USB-C)
- 23. USB-C™ connector (USB 3.1 Gen 1)
- 24. TrackPoint pointing stick

\* For selected models

**i** Read the statement on USB transfer rate in the *User Guide*. Refer to the *Safety and Warranty Guide* for accessing the *User Guide*.

# Customer Replacement Units (CRUs)

---

- ac power adapter
- Base cover assembly
- Coin-cell battery
- M.2 solid-state drive
- \* • M.2 solid-state drive bracket
- \* • Memory module
- \* • Nano-SIM-card tray
- Power cord
- \* • Wireless WAN card
- Keyboard
- Speakers
- Always On USB 3.1 connector Gen 1 board
- Always On USB 3.1 connector Gen 1 board bracket

\* For selected models

Refer to the *User Guide* for CRU definition.

# Additional information

---

## European Union – compliance with the Radio Equipment Directive

Hereby, Lenovo (Singapore) Pte. Ltd., declares that the radio equipment type ThinkPad T590/P53s are in compliance with Directive 2014/53/EU.

The full text of the system EU declaration of conformity and the EU wireless module declarations are available at the following Internet addresses:

- For notebook computers:  
<https://www.lenovo.com/eu-doc-notebooks>
- For tablets:  
<https://www.lenovo.com/eu-doc-tablets>

This radio equipment operates with the following frequency bands and maximum radio-frequency power:

Technology	Frequency band [MHz]	Maximum transmit power
WLAN 802.11b/g/n	2400 - 2483.5	< 20 dBm
WLAN 802.11a/n/ac	5150 - 5725	< 23 dBm
WLAN 802.11a/n/ac	5725 - 5875	< 13.98 dBm
Bluetooth BR/EDR/LE	2400 - 2483.5	< 20 dBm
WWAN UMTS	1/8	< 24.5 dBm
WWAN LTE	1/3/7/8/20/28	< 24 dBm
NFC	13.56	< -5.31 dB $\mu$ A/m @10m



---

**Second Edition (December 2019)**

**© Copyright Lenovo 2019.**

LIMITED AND RESTRICTED RIGHTS NOTICE: If data or software is delivered pursuant to a General Services Administration "GSA" contract, use, reproduction, or disclosure is subject to restrictions set forth in Contract No. GS-35F-05925.

**Reduce | Reuse | Recycle**

