

ThinkPad® T495s

Setup Guide

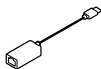
Lenovo

For Barcode Position Only

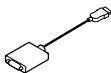
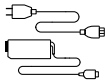
Printed in China

PN: SPXXXXXXX

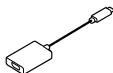
Unpack



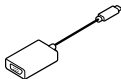
* ThinkPad Ethernet Extension Adapter Gen 2



* Lenovo HDMI to VGA Adapter



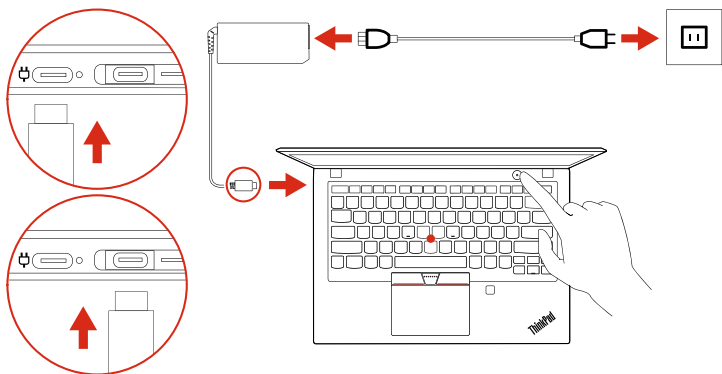
* Lenovo USB-C to DisplayPort Adapter



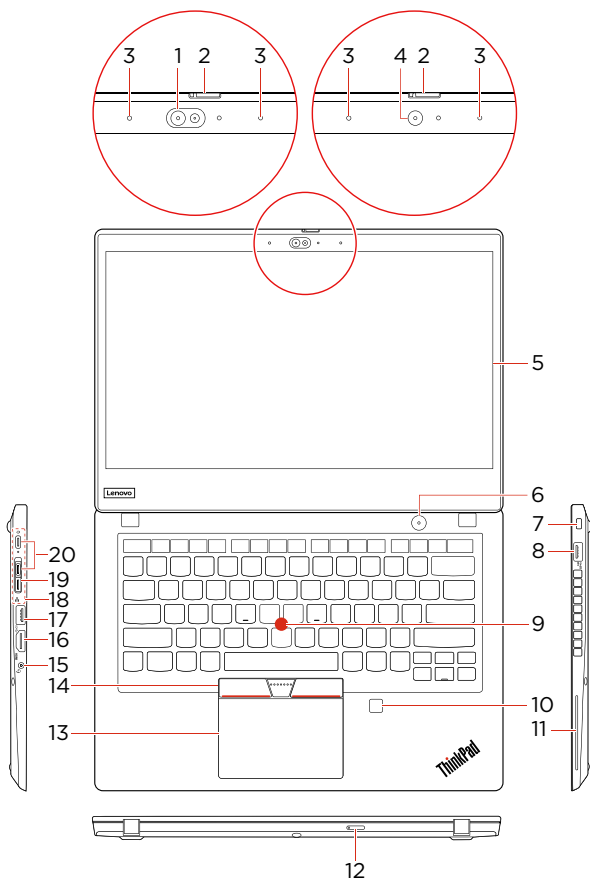
* Lenovo USB-C to VGA Adapter

* For selected models

Initial Setup



Overview



- * 1. Infrared camera
- * 2. ThinkShutter
- * 3. Microphones
- * 4. Camera
- * 5. Multi-touch screen
- 6. Power button
- 7. Security-lock slot
- 8. Always On USB 3.1 connector Gen 1
- 9. TrackPoint pointing stick
- * 10. Fingerprint reader
- * For selected models
- * 11. Smart card slot
- 12. Nano-SIM-card and microSD-card slot
- 13. Trackpad
- 14. TrackPoint® buttons
- 15. Audio connector
- 16. HDMI™ connector
- 17. USB 3.1 connector Gen 2
- 18. Docking station connector
- 19. Ethernet extension connector Gen 2
- 20. USB-C™ connector (USB 3.1 Gen 2)

 Read the statement on USB transfer rate in the *User Guide*. Refer to the *Safety and Warranty Guide* for accessing the *User Guide*.

Customer Replacement Units (CRUs)

- ac power adapter
- * • Base cover assembly
- M.2 solid-state drive
- Power cord
- Pointing-stick nonslip cap
- * • Wireless-WAN card
- Wireless-LAN card
- Nano-SIM-card and microSD-card tray
- Always On USB 3.1 connector Gen 1 board cable

Refer to the *User Guide* for CRU definition

- * For selected models

Additional information

European Union — compliance with the Radio Equipment Directive

Hereby, Lenovo (Singapore) Pte. Ltd., declares that the radio equipment type ThinkPad T495s is in compliance with Directive 2014/53/EU.

The full text of the system EU declaration of conformity and the EU wireless module declarations are available at the following Internet addresses:

- For notebook computers:
<https://www.lenovo.com/eu-doc-notebooks>
- For tablets:
<https://www.lenovo.com/eu-doc-tablets>

This radio equipment operates with the following frequency bands and maximum radio-frequency power:

| Technology | Frequency band [MHz] | Maximum transmit power |
|------------------------|----------------------|------------------------|
| WLAN 802.11b/g/n | 2400 - 2483.5 | < 20 dBm |
| WLAN 802.11a/n/ac | 5150 - 5725 | < 23 dBm |
| WLAN 802.11a/n/ac | 5725 - 5875 | < 13.98 dBm |
| WWAN UMTS | 1/8 | < 24.5 dBm |
| WWAN LTE | 1/3/7/8/20/28 | < 24 dBm |
| Bluetooth BR/EDR/LE | 2400 - 2483.5 | < 20 dBm |



Second Edition (December 2019)

© Copyright Lenovo 2019.

LIMITED AND RESTRICTED RIGHTS NOTICE: If data or software is delivered pursuant to a General Services Administration "GSA" contract, use, reproduction, or disclosure is subject to restrictions set forth in Contract No. GS-35F-05925.

Reduce | Reuse | Recycle

