

ThinkPad[®] T490s

Setup Guide

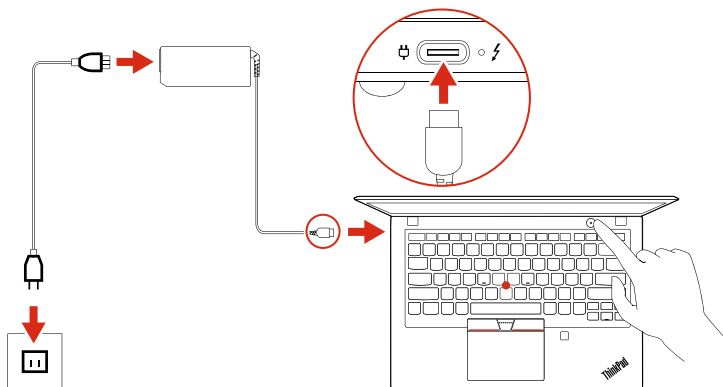
Lenovo

For Barcode Position Only

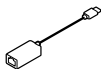
Printed in China

PN: SPXXXXXXX

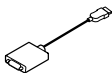
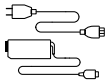
Initial Setup



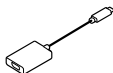
Unpack



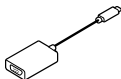
- * ThinkPad Ethernet Extension Adapter Gen 2



- * Lenovo HDMI to VGA Adapter



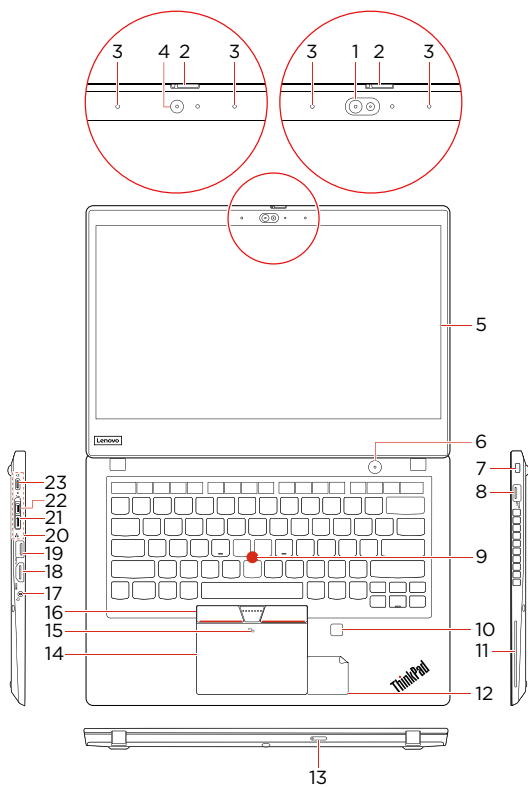
- * Lenovo USB-C to DisplayPort Adapter



- * Lenovo USB-C to VGA Adapter

- * For selected models

Overview



- * 1. Infrared camera
- * 2. ThinkShutter
- * 3. Microphones
- * 4. Camera
- * 5. Multi-touch screen
- 6. Power button
- 7. Security-lock slot
- 8. Always On USB 3.1 connector Gen 1
- 9. TrackPoint pointing stick
- * 10. Fingerprint reader
- * 11. Smart card slot
- * 12. NFC label for silver model
- 13. Nano-SIM-card and microSD-card slot
- 14. Trackpad
- * 15. NFC mark for black model
- 16. TrackPoint® buttons
- 17. Audio connector
- 18. HDMI™ connector
- 19. USB 3.1 connector Gen 1
- 20. Docking station connector
- 21. Ethernet extension connector Gen 2
- 22. Thunderbolt™ 3 connector (USB-C)
- 23. USB-C™ connector (USB 3.1 Gen 1)

* For selected models

 Read the statement on USB transfer rate in the *User Guide*. Refer to the *Safety and Warranty Guide* for accessing the *User Guide*.

Customer Replacement Units (CRUs)

- ac power adapter
 - Power cord
 - Base cover assembly
 - M.2 solid-state drive
 - M.2 solid-state drive bracket
 - Nano-SIM-card and microSD-card tray
 - * •Wireless WWAN card
- * For selected models
Refer to the *User Guide* for CRU definition.

Additional information

European Union — compliance with the Radio Equipment Directive

Hereby, Lenovo (Singapore) Pte. Ltd., declares that the radio equipment type ThinkPad T490s is in compliance with Directive 2014/53/EU.

The full text of the system EU declaration of conformity and the EU wireless module declarations are available at the following Internet addresses:

- For notebook computers:
<https://www.lenovo.com/eu-doc-notebooks>
- For tablets:
<https://www.lenovo.com/eu-doc-tablets>

This radio equipment operates with the following frequency bands and maximum radio-frequency power:

Technology	Frequency band [MHz]	Maximum transmit power
WLAN 802.11b/g/n/ax	2400 - 2483.5	< 20 dBm
WLAN 802.11a/n/ac/ax	5150 - 5725	< 23 dBm
WLAN 802.11a/n/ac/ax	5725 - 5875	< 13.98 dBm
Bluetooth BR/EDR/LE	2400 - 2483.5	< 20 dBm
WWAN UMTS	1/8	< 24.5 dBm
WWAN LTE	1/3/7/8/20/28	< 24 dBm
NFC	13.56	< -5.31 dBμA/m @10m



Third Edition (December 2019)

© Copyright Lenovo 2019.

LIMITED AND RESTRICTED RIGHTS NOTICE: If data or software is delivered pursuant to a General Services Administration "GSA" contract, use, reproduction, or disclosure is subject to restrictions set forth in Contract No. GS-35F-05925.

Reduce | Reuse | Recycle

