

ThinkPad T490/P43s

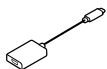
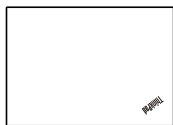
Setup Guide

Lenovo

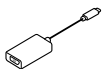
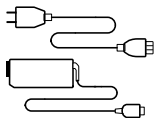
For Barcode Position Only

Printed in China

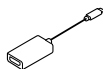
Unpack



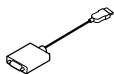
* Lenovo USB-C to DisplayPort Adapter



* Lenovo USB-C to VGA Adapter



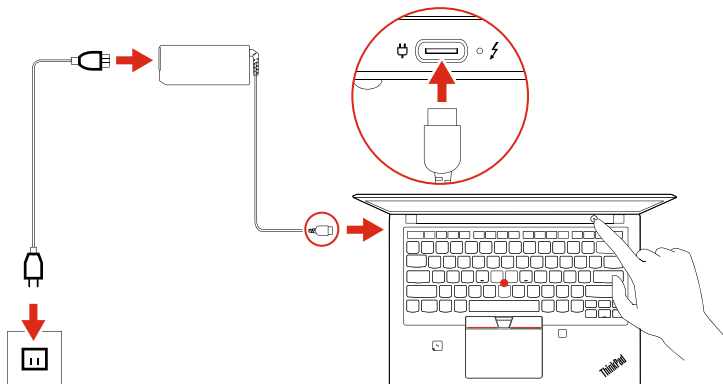
* Lenovo USB-C to HDMI Adapter



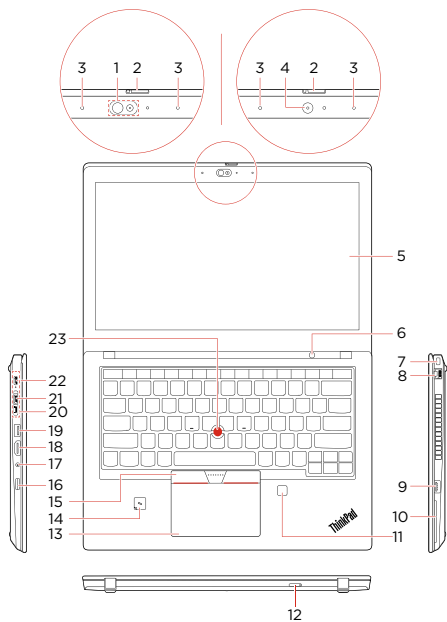
* Lenovo HDMI to VGA Adapter

* For selected models

Initial Setup



Overview



Overview

- * 1. Infrared camera
- * 2. ThinkShutter
3. Microphones
- * 4. Camera
- * 5. Multi-touch screen
6. Power button
7. Security-lock slot
8. Ethernet connector
9. Always On USB 3.1 connector Gen 1
- * 10. Smart card slot
- * 11. Fingerprint reader
- * 12. Nano-SIM-card slot
13. Trackpad
- * 14. NFC label
15. TrackPoint® buttons
16. microSD card slot
17. Audio connector
18. HDMI™ connector
19. USB 3.1 connector Gen 1
20. Docking-station connector
21. Thunderbolt™ 3 connector (USB-C)
22. USB-C™ connector (USB 3.1 Gen 1)
23. TrackPoint pointing stick

* For selected models

 Read the statement on USB transfer rate in the *User Guide*. Refer to the *Safety and Warranty Guide* for accessing the *User Guide*.

Customer Replacement Units (CRUs)

- ac power adapter
- Base cover assembly
- Coin-cell battery
- M.2 solid-state drive
- * • M.2 solid-state drive bracket
- * • Memory module
- * • Nano-SIM-card tray
- Power cord
- * • Wireless WAN card
- Keyboard
- Speakers
- Always On USB 3.1 connector Gen 1 board
- Always On USB 3.1 connector Gen 1 board bracket

* For selected models
Refer to the *User Guide* for CRU definition.

Additional information

European Union – compliance with the Radio Equipment Directive

Hereby, Lenovo (Singapore) Pte. Ltd., declares that the radio equipment types ThinkPad T490/ThinkPad P43s are in compliance with Directive 2014/53/EU.

The full text of the system EU declaration of conformity and the EU wireless module declarations are available at the following Internet addresses:

- For notebook computers:
<https://www.lenovo.com/eu-doc-notebooks>
- For tablets:
<https://www.lenovo.com/eu-doc-tablets>

This radio equipment operates with the following frequency bands and maximum radio-frequency power:

Technology	Frequency band [MHz]	Maximum transmit power
WLAN 802.11b/g/n/ax	2400 - 2483.5	< 20 dBm
WLAN 802.11a/n/ac/ax	5150 - 5725	< 23 dBm
WLAN 802.11a/n/ac/ax	5725 - 5875	< 13.98 dBm
Bluetooth BR/EDR/LE	2400 - 2483.5	< 20 dBm
WWAN UMTS	1/8	< 24.5 dBm
WWAN LTE	1/3/7/8/20/28	< 24 dBm
WWAN LTE	38/40/42	< 24 dBm
NFC	13.56	< -5.31 dB μ A/m @10m



Second Edition (December 2019)

© Copyright Lenovo 2019.

LIMITED AND RESTRICTED RIGHTS NOTICE: If data or software is delivered pursuant to a General Services Administration "GSA" contract, use, reproduction, or disclosure is subject to restrictions set forth in Contract No. GS-35F-05925.

Reduce | Reuse | Recycle

