

ThinkPad® T14 Gen 1 / P14s Gen 1

Setup Guide

Guide de configuration

Einrichtungsanleitung

Guida di configurazione

Installatiegids

Manual de Configuração

Lenovo

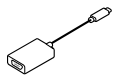
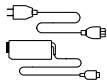
For Barcode Position Only

Printed in China

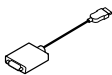
PN: SP40T80341

Initial Setup

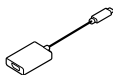
Configuration initiale | Erstkonfiguration | Configurazione iniziale | Eerste installatie |
Configuração inicial



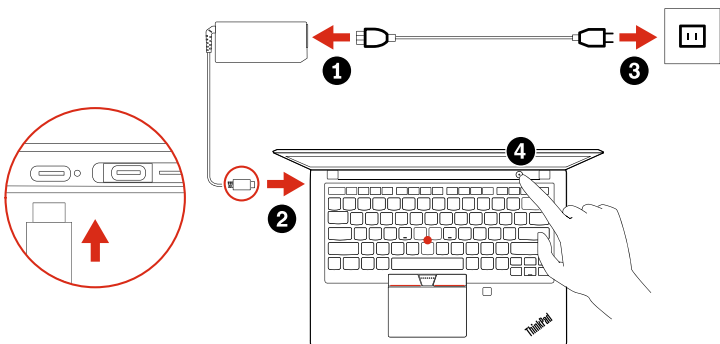
* Lenovo USB-C to
VGA Adapter



* Lenovo HDMI to VGA
Adapter



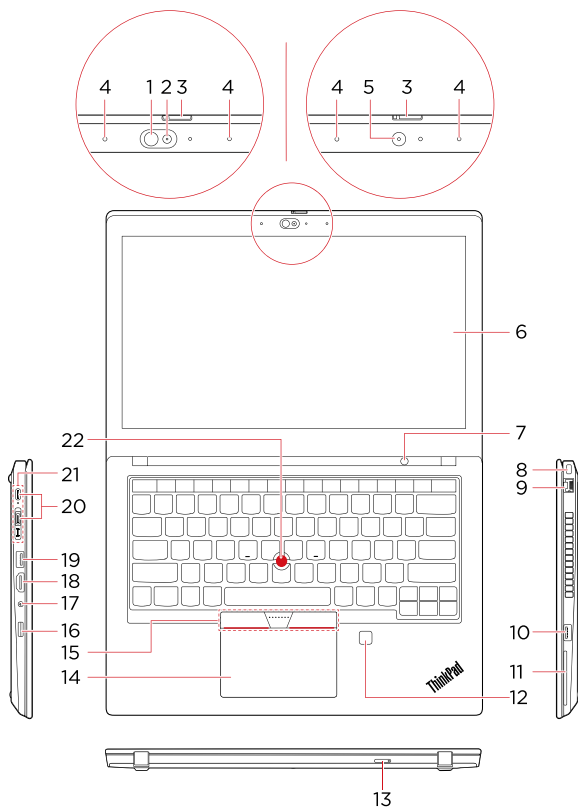
* Lenovo USB-C to
DisplayPort Adapter



* For selected models | Sur certains modèles | Für ausgewählte Modelle | Per alcuni modelli | Voor bepaalde modellen | Em modelos selecionados

Overview

Présentation | Überblick | Panoramica | Overzicht | Descrição geral



- * 1. Infrared LED
- * 2. Camera with IR function
- * 3. ThinkShutter
- * 4. Microphones
- * 5. Camera
- * 6. Multi-touch screen
- 7. Power button
- 8. Security-lock slot
- 9. Ethernet connector
- 10. Always On USB 3.2 connector Gen 1
- * 11. Smart-card slot
- * 12. Fingerprint reader
- * 13. Nano-SIM-card slot
- 14. TrackPad
- 15. TrackPoint® buttons
- 16. microSD card slot
- 17. Audio connector
- 18. HDMI™ connector
- 19. USB 3.2 connector Gen 1
- 20. USB-C™ (3.2 Gen 2) connectors
- 21. Docking-station connector
- 22. TrackPoint pointing stick

i Read the statement on USB transfer rate in the *User Guide*. Refer to the *Safety and Warranty Guide* for accessing the *User Guide*.

- * 1. Voyant infrarouge
- * 2. Caméra avec fonction infrarouge
- * 3. ThinkShutter
- * 4. Microphones
- * 5. Caméra
- * 6. Écran tactile multipoint
- 7. Bouton d'alimentation
- 8. Prise de sécurité
- 9. Connecteur Ethernet
- 10. Connecteur Always On USB 3.2 Gen 1
- * 11. Logement pour carte à puce
- * 12. Lecteur d'empreintes digitales
- * 13. Logement pour carte nano-SIM
- 14. Pavé tactile
- 15. Boutons TrackPoint®
- 16. Logement pour carte microSD
- 17. Connecteur audio
- 18. Connecteur HDMI™
- 19. Connecteur USB 3.2 Gen 1
- 20. Connecteurs USB-C™ (3.2 Gen 2)
- 21. Connecteur de la station d'accueil
- 22. Dispositif de pointage TrackPoint

i Lire la déclaration sur le taux de transfert USB dans le *Guide d'utilisation*. Consulter les *Consignes de sécurité et déclaration de garantie* pour accéder au *Guide d'utilisation*.

- * 1. Infrarot-LED
- * 2. Kamera mit IR-Funktion
- * 3. ThinkShutter
- * 4. Mikrofone
- * 5. Kamera
- * 6. Multitouchscreen
- 7. Betriebsspannungsschalter
- 8. Schlitz für Sicherheitsschloss
- 9. Ethernet-Anschluss
- 10. Always On USB 3.2-Anschluss Gen 1
- * 11. Smart-Card-Steckplatz
- * 12. Lesegerät für Fingerabdrücke
- * 13. Nano-SIM-Kartensteckplatz
- 14. TrackPad
- 15. TrackPoint®-Klicktasten
- 16. MicroSD-Karten-Steckplatz
- 17. Audioanschluss
- 18. HDMI™-Anschluss
- 19. USB 3.2-Anschluss Gen 1
- 20. USB-C™-Anschlüsse (3.2 Gen 2)
- 21. Andockstationsanschluss
- 22. TrackPoint-Stift

i Lesen Sie den Hinweis zur USB-Übertragungsrates im *Benutzerhandbuch*. Informationen zum Zugriff auf das *Benutzerhandbuch* finden Sie im *Handbuch Sicherheit und Garantie*.

- * 1. LED a infrarossi
- * 2. Fotocamera con funzione IR
- * 3. ThinkShutter
- * 4. Microfoni
- * 5. Fotocamera
- * 6. Schermo multitouch
- 7. Pulsante di alimentazione
- 8. Slot del blocco di sicurezza
- 9. Connettore Ethernet
- 10. Connettore Always On USB 3.2 Gen 1
- * 11. Slot per Smart Card
- * 12. Lettore di impronte digitali
- * 13. Slot per schede nano-SIM
- 14. TrackPad
- 15. Pulsanti TrackPoint®
- 16. Slot per schede microSD
- 17. Connettore audio
- 18. Connettore HDMI™
- 19. Connettore USB 3.2 Gen 1
- 20. Connettori USB-C™ (3.2 Gen 2)
- 21. Connettore della docking station
- 22. Levetta di puntamento TrackPoint

i Leggere le informazioni sulla velocità di trasferimento USB nella *Guida per l'utente*. Fare riferimento alla *Guida in materia di sicurezza e garanzia* per accedere alla *Guida per l'utente*.

- * 1. Infrarood-lampje
- * 2. Camera met IR-functie
- * 3. ThinkShutter
- * 4. Microfoons
- * 5. Camera
- * 6. Multitouch-scherm
- 7. Aan/uit-knop
- 8. Beveiligingsslot
- 9. Ethernet-aansluiting
- 10. Always On USB 3.2 Gen 1-aansluiting
- * 11. Sleuf voor Smartcard
- * 12. Vingerafdruklezer
- * 13. Nano-SIM-kaartsleuf
- 14. TrackPad
- 15. TrackPoint®-knoppen
- 16. MicroSD-kaartsleuf
- 17. Audioaansluiting
- 18. HDMI™-aansluiting
- 19. USB-aansluiting 3.2 Gen 1
- 20. USB-C™-aansluitingen (3.2 Gen 2)
- 21. Aansluiting voor dockingstation
- 22. TrackPoint-aanwijsknopje

i Lees de verklaring over de USB-overdrachtssnelheid in de *Gebruikershandleiding*. Raadpleeg de *Handleiding veiligheid en garantie* voor toegang tot de *Gebruikershandleiding*.

- * 1. LED infravermelho
- * 2. Câmara com função de IV
- * 3. ThinkShutter
- * 4. Microfones
- * 5. Câmara
- * 6. Ecrã multitoque
- 7. Botão para ligar/desligar
- 8. Ranhura de bloqueio para segurança
- 9. Conector Ethernet
- 10. Conector Always On USB 3.2 Gen 1
- * 11. Ranhura para cartões Smart Card
- * 12. Leitor de impressões digitais
- * 13. Ranhura para cartões nano-SIM
- 14. Pannel tátil
- 15. Botões do TrackPoint®
- 16. Ranhura para cartões microSD
- 17. Conector de áudio
- 18. Conector HDMI™
- 19. Conector USB 3.2 Gen 1
- 20. Conectores USB-C™ (3.2 Gen 2)
- 21. Conector de base de expansão
- 22. Ponto de deslocamento do rato TrackPoint

i Leia a declaração relativa à velocidade de transferência USB no *Manual do Utilizador*. Consulte o *Manual de Segurança e Garantia* para aceder ao *Manual do Utilizador*.

Additional information

Informations complémentaires | Zusätzliche Informationen | Informazioni aggiuntive | Aanvullende informatie | Informações adicionais

European Union (EU) / United Kingdom (UK) – Radio Equipment Compliance

Hereby, Lenovo declares that the radio equipment type ThinkPad T14 Gen 1 / ThinkPad P14s Gen 1 is in compliance with Directive 2014/53/EU, as well as UK Radio Equipment Regulations SI 2017 No. 1206.

The full texts of the system declarations of conformity are available at:

<https://www.lenovo.com/us/en/compliance/eu-doc> for EU and

<https://www.lenovo.com/us/en/compliance/uk-doc> for UK.

This radio equipment operates with the following frequency bands and maximum radio-frequency power:

Technology	Frequency band [MHz]	Maximum transmit power
WLAN 802.11b/g/n/ax	2400 - 2483.5	< 20 dBm
WLAN 802.11a/n/ac/ax	5150 - 5725	< 23 dBm
WLAN 802.11a/n/ac/ax	5725 - 5875	< 13.98 dBm
Bluetooth BR/EDR/LE	2400 - 2483.5	< 20 dBm
WWAN UMTS	1/8	< 24.5 dBm
WWAN LTE	1/3/7/8/20/28	< 24 dBm

Usage of this device is limited to indoor use in the WLAN band 5150 – 5350 MHz.

Union européenne / Royaume-Uni - Conformité à la directive concernant l'équipement radio

Lenovo déclare par la présente que les équipements radio de types ThinkPad T14 Gen 1 et ThinkPad P14s Gen 1 sont conformes à la directive 2014/53/UE ainsi qu'à la réglementation du Royaume-Uni relative aux équipements radio SI 2017 n° 1206.

Le texte complet des déclarations de conformité concernant les systèmes est disponible à l'adresse Internet suivante :

<https://www.lenovo.com/us/en/compliance/eu-doc> pour l'Union européenne et

<https://www.lenovo.com/us/en/compliance/uk-doc> pour le Royaume-Uni.

Cet équipement radio utilise les bandes de fréquences suivantes et une alimentation à haute fréquence maximum :

Technologie	Bande de fréquence [MHz]	Niveau de puissance de transmission maximal
WLAN 802.11b/g/n/ax	2 400 - 2 483,5	< 20 dBm
WLAN 802.11a/n/ac/ax	5 150 - 5 725	< 23 dBm
WLAN 802.11a/n/ac/ax	5 725 - 5 875	< 13,98 dBm
Bluetooth BR/EDR/LE	2 400 - 2 483,5	< 20 dBm
WWAN UMTS	1/8	< 24,5 dBm
WWAN LTE	1/3/7/8/20/28	< 24 dBm

Ce périphérique ne peut être utilisé qu'à l'intérieur, dans la bande de fréquences WLAN de 5 150 à 5 350 MHz.

Europäische Union (EU) / Vereinigtes Königreich (UK) - Erfüllung der Funkanlagen-Richtlinie

Lenovo erklärt hiermit, dass die Funkgeräte vom Typ ThinkPad T14 Gen 1 und ThinkPad P14s Gen 1 die EU-Richtlinie 2014/53/EU und die UK-Funkanlagen-Richtlinie SI 2017/1206 erfüllen.

Der vollständige Wortlaut der Konformitätserklärungen für das System ist verfügbar unter:

<https://www.lenovo.com/us/en/compliance/eu-doc> für die EU und

<https://www.lenovo.com/us/en/compliance/uk-doc> für UK.

Dieses Funkgerät arbeitet mit den folgenden Frequenzbändern und der folgenden maximalen HF-Leistung:

Technologie	Frequenzband [MHz]	Maximale Übertragungsleistung
WLAN 802.11b/g/n/ax	2.400 - 2.483,5	< 20 dBm
WLAN 802.11a/n/ac/ax	5.150 - 5.725	< 23 dBm
WLAN 802.11a/n/ac/ax	5.725 - 5.875	< 13,98 dBm
Bluetooth BR/EDR/LE	2.400 - 2.483,5	< 20 dBm
WWAN UMTS	1/8	< 24,5 dBm
WWAN LTE	1/3/7/8/20/28	< 24 dBm

Die Verwendung dieser Einheit ist im Innenbereich auf das Frequenzband von 5.150 bis 5.350 MHz beschränkt.

Conformità alla direttiva sulle apparecchiature radio per l'Unione Europea (UE) / il Regno Unito (UK)

Con la presente documentazione, Lenovo dichiara che i tipi di apparecchiatura radio ThinkPad T14 Gen 1/ThinkPad P14s Gen 1 sono conformi alla direttiva 2014/53/UE e alle normative per le apparecchiature radio del Regno Unito, decreto ministeriale n. 1206 del 2017.

I testi integrali delle dichiarazioni di conformità dei sistemi sono disponibili all'indirizzo:

[https://www.lenovo.com/us/en/compliance/eu-](https://www.lenovo.com/us/en/compliance/eu-doc)

[doc per l'Unione Europea e](https://www.lenovo.com/us/en/compliance/eu-doc)

[https://www.lenovo.com/us/en/compliance/uk-](https://www.lenovo.com/us/en/compliance/uk-doc)

[doc per il Regno Unito.](https://www.lenovo.com/us/en/compliance/uk-doc)

Questa apparecchiatura radio funziona con le seguenti bande di frequenza e di alimentazione a radiofrequenza massime:

Tecnologia	Banda di frequenza [MHz]	Potenza di trasmissione massima
WLAN 802.11b/g/n/ax	2.400 - 2.483,5	< 20 dBm
WLAN 802.11a/n/ac/ax	5.150 - 5.725	< 23 dBm
WLAN 802.11a/n/ac/ax	5.725 - 5.875	< 13,98 dBm
Bluetooth BR/EDR/LE	2.400 - 2.483,5	< 20 dBm
WWAN UMTS	1/8	< 24,5 dBm
WWAN LTE	1/3/7/8/20/28	< 24 dBm

L'utilizzo di questo dispositivo è limitato ad ambienti chiusi in banda WLAN compresa 5.150 e 5.350 MHz.

Europese Unie (EU) / Verenigd Koninkrijk (VK) – Naleving van Richtlijnen voor radioapparatuur

Hierbij verklaart Lenovo dat de radioapparatuur van het type ThinkPad T14 Gen 1/ThinkPad P14s Gen 1 voldoet aan Richtlijn 2014/53/EU en aan de Britse regelgeving voor radioapparatuur SI 2017 No. 1206.

De volledige tekst van de conformiteitsverklaringen voor dit systeem is beschikbaar op:

[https://www.lenovo.com/us/en/compliance/eu-](https://www.lenovo.com/us/en/compliance/eu-doc)
[doc voor de EU en](https://www.lenovo.com/us/en/compliance/eu-doc)

[https://www.lenovo.com/us/en/compliance/uk-](https://www.lenovo.com/us/en/compliance/uk-doc)
[doc voor het VK.](https://www.lenovo.com/us/en/compliance/uk-doc)

Deze radioapparatuur werkt met de volgende frequentiebanden en maximaal radiofrequentievermogen:

Tecnologie	Frequentieband [MHz]	Maximaal zendvermogen
WLAN 802.11b/g/n/ax	2400 - 2483,5	< 20 dBm
WLAN 802.11a/n/ac/ax	5150 - 5725	< 23 dBm
WLAN 802.11a/n/ac/ax	5725 - 5875	< 13,98 dBm
Bluetooth BR/EDR/LE	2400 - 2483,5	< 20 dBm
WWAN UMTS	1/8	< 24,5 dBm
WWAN LTE	1/3/7/8/20/28	< 24 dBm

Gebruik van dit apparaat is beperkt tot gebruik binnenshuis in de WLAN-band van 5150 tot 5350 MHz.

União Europeia (UE) / Reino Unido (RU) – Conformidade com o Equipamento de Rádio

Pelo presente, a Lenovo declara que os tipos de equipamento de rádio ThinkPad T14 Gen 1/ThinkPad P14s Gen 1 estão em conformidade com a Diretiva 2014/53/UE, bem como com os Regulamentos sobre Equipamento de Rádio do Reino Unido SI 2017 N.º 1206.

Os textos completos das declarações de conformidade do sistema estão disponíveis em: [https://www.lenovo.com/us/en/compliance/eu-](https://www.lenovo.com/us/en/compliance/eu-doc)
[doc para a UE e](https://www.lenovo.com/us/en/compliance/eu-doc) [https://www.lenovo.com/us/en/compliance/uk-](https://www.lenovo.com/us/en/compliance/uk-doc)
[doc para o RU.](https://www.lenovo.com/us/en/compliance/uk-doc)

Este equipamento de rádio funciona com as seguintes bandas de frequência e potência de radiofrequência máxima:

Tecnologia	Banda de frequência [MHz]	Potência de transmissão máxima
WLAN 802.11b/g/n/ax	2400 - 2483,5	< 20 dBm
WLAN 802.11a/n/ac/ax	5150 - 5725	< 23 dBm
WLAN 802.11a/n/ac/ax	5725 - 5875	< 13,98 dBm
Bluetooth BR/EDR/LE	2400 - 2483,5	< 20 dBm
WWAN UMTS	1/8	< 24,5 dBm
WWAN LTE	1/3/7/8/20/28	< 24 dBm

A utilização deste dispositivo é limitada à utilização no interior na banda WLAN 5150 - 5350 MHz.

E-manual

Manuel électronique | E-Handbuch | Manuale elettronico | E-handleiding |
Manual eletrônico



Second Edition (May 2021)

© Copyright Lenovo 2020,2021.

LIMITED AND RESTRICTED RIGHTS NOTICE: If data or software is delivered pursuant to a General Services Administration "GSA" contract, use, reproduction, or disclosure is subject to restrictions set forth in Contract No. GS-35F-05925.

Reduce | Reuse | Recycle



