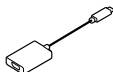
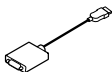
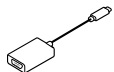
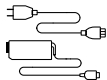


ThinkPad T14 Gen 1

Setup Guide

Lenovo

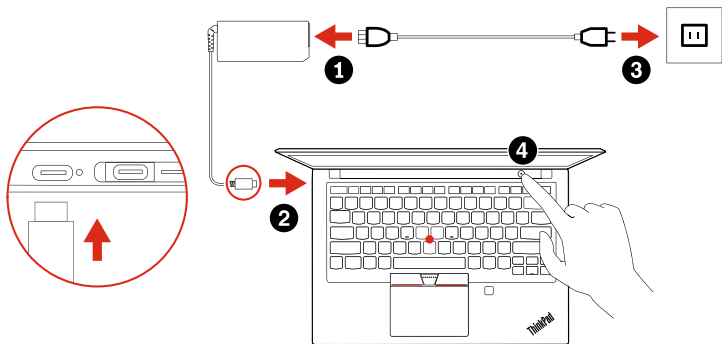
Initial Setup



* Lenovo USB-C to
VGA Adapter

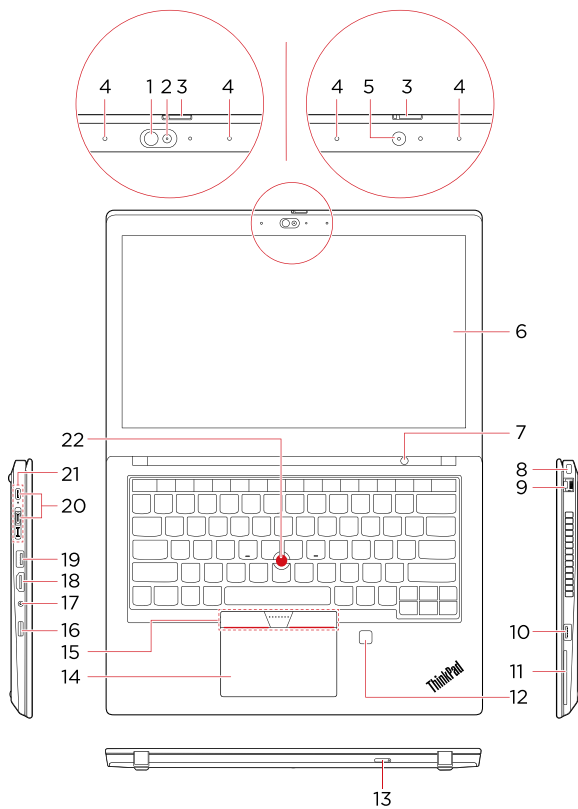
* Lenovo HDMI to VGA
Adapter

* Lenovo USB-C to
DisplayPort Adapter



* For selected models

Overview



- * 1. Infrared LED
- * 2. Camera with IR function
- * 3. ThinkShutter
- * 4. Microphones
- * 5. Camera
- * 6. Multi-touch screen
- 7. Power button
- 8. Security-lock slot
- 9. Ethernet connector
- 10. Always On USB 3.2 connector Gen 1
- * 11. Smart-card slot
- * 12. Fingerprint reader
- * 13. Nano-SIM-card slot
- 14. TrackPad
- 15. TrackPoint® buttons
- 16. microSD card slot
- 17. Audio connector
- 18. HDMI™ connector
- 19. USB 3.2 connector Gen 1
- 20. USB-C™ (3.2 Gen 2) connectors
- 21. Docking-station connector
- 22. TrackPoint pointing stick

 Read the statement on USB transfer rate in the *User Guide*. Refer to the *Safety and Warranty Guide* for accessing the *User Guide*.

Customer Replaceable Units (CRUs)

- ac power adapter
- Base cover assembly
- Coin-cell battery
- Keyboard
- * • Nano-SIM-card tray
- M.2 solid-state drive
- * • M.2 solid-state drive bracket
- * • Memory module
- Power cord
- Speaker assembly
- * • Wireless WAN card
- Always On USB 3.2 connector Gen 1 board
- Always On USB 3.2 connector Gen 1 board bracket

Refer to the *User Guide* for CRU definition.

Additional information

European Union – compliance with the Radio Equipment Directive

Hereby, Lenovo (Singapore) Pte. Ltd., declares that the radio equipment type ThinkPad T14 Gen 1 is in compliance with Directive 2014/53/EU.

The full text of the system EU declaration of conformity is available at the following Internet address:

<https://www.lenovo.com/us/en/compliance/eu-doc>

This radio equipment operates with the following frequency bands and maximum radio-frequency power:

Technology	Frequency band [MHz]	Maximum transmit power
WLAN 802.11b/g/n/ax	2400 - 2483.5	< 20 dBm
WLAN 802.11a/n/ac/ax	5150 - 5725	< 23 dBm
WLAN 802.11a/n/ac/ax	5725 - 5875	< 13.98 dBm
Bluetooth BR/EDR/LE	2400 - 2483.5	< 20 dBm
WWAN UMTS	1/8	< 24.5 dBm
WWAN LTE	1/3/7/8/20/28	< 24 dBm

Usage of all the radio devices is limited to indoor in the band 5150 MHz to 5350 MHz (channels 36, 40, 44, 48, 52, 56, 60, 64).



First Edition (April 2020)

© Copyright Lenovo 2020.

LIMITED AND RESTRICTED RIGHTS NOTICE: If data or software is delivered pursuant to a General Services Administration "GSA" contract, use, reproduction, or disclosure is subject to restrictions set forth in Contract No. GS-35F-05925.

Reduce | Reuse | Recycle

