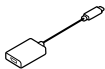
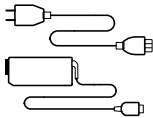


ThinkPad[®] P73

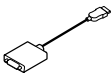
Setup Guide

Lenovo

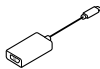
Unpack



* Lenovo USB-C to DisplayPort Adapter



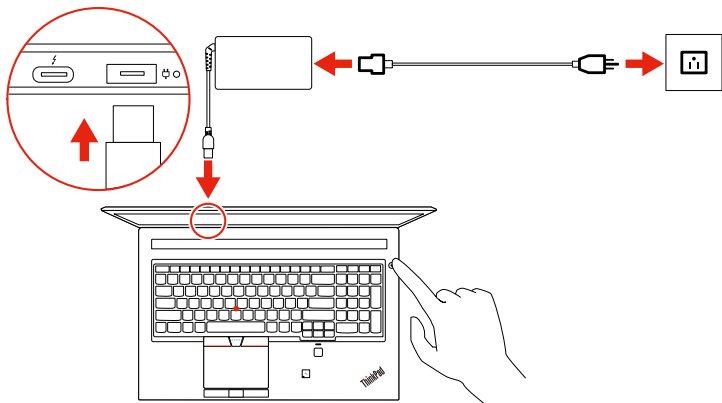
* Lenovo HDMI to VGA Adapter



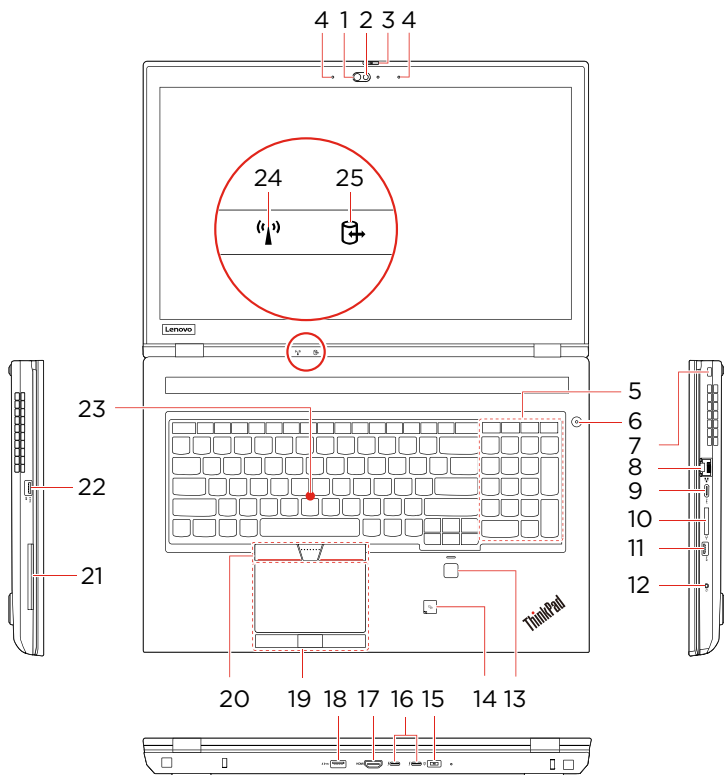
* Lenovo USB-C to VGA Adapter

* For selected models

Initial Setup



Overview



- * 1. Infrared LED
- * 2. Camera with IR function
- * 3. ThinkShutter
- 4. Microphones
- 5. Numeric keypad
- 6. Power button
- 7. Security-lock slot
- 8. Ethernet connector
- 9. USB-C™ connector
- 10. SD-card slot
- 11. USB 3.1 connector Gen 1
- 12. Audio connector
- 13. Fingerprint reader
- * 14. NFC label
- 15. Power connector
- 16. Thunderbolt™ 3 connectors (USB-C)
- 17. HDMI™ connector
- 18. USB 3.1 connector Gen 1
- 19. Trackpad with buttons
- 20. TrackPoint buttons
- * 21. Smart-card slot
- 22. Always on USB 3.1 connector Gen 1
- 23. TrackPoint pointing stick
- 24. Wireless-status indicator
- 25. Device-access-status indicator

* For selected models

 Read the statement on USB transfer rate in the *User Guide*. Refer to the *Safety and Warranty Guide* for accessing the *User Guide*.

Customer Replacement Units (CRUs)

- ac power adapter
- Bottom cover
- * • Hard disk drive
- * • Hard disk drive cable
- Keyboard
- Memory module under the bottom cover
- * • M.2 solid-state drive
- * • Mylar of M.2 solid-state drive
- Mylar of memory module under the bottom cover
- Power cord
- * • Thermal pad

* for selected models

Refer to the *User Guide* for CRU definition.

Additional information

European Union — compliance with the Radio Equipment Directive

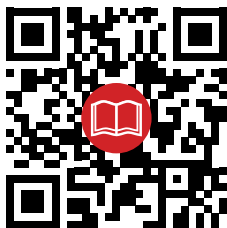
Hereby, Lenovo (Singapore) Pte. Ltd., declares that the radio equipment type ThinkPad P73 is in compliance with Directive 2014/53/EU.

The full text of the system EU declaration of conformity and the EU wireless module declarations are available at the following Internet addresses:

- For notebook computers:
<https://www.lenovo.com/eu-doc-notebooks>
- For tablets:
<https://www.lenovo.com/eu-doc-tablets>

This radio equipment operates with the following frequency bands and maximum radio-frequency power:

Technology	Frequency band [MHz]	Maximum transmit power
WLAN 802.11b/g/n/ax	2400 - 2483.5	< 20 dBm
WLAN 802.11a/n/ac/ax	5150 - 5725	< 23 dBm
WLAN 802.11a/n/ac/ax	5725 - 5875	< 13.98 dBm
Bluetooth BR/EDR/LE	2400 - 2483.5	< 20 dBm
NFC	13.56	< -5.31 dBμA/m @10m



First Edition (January 2020)

© Copyright Lenovo 2020.

LIMITED AND RESTRICTED RIGHTS NOTICE: If data or software is delivered pursuant to a General Services Administration "GSA" contract, use, reproduction, or disclosure is subject to restrictions set forth in Contract No. GS-35F-05925.

Reduce | Reuse | Recycle



For Barcode Position Only

Printed in China
PN: xxxxxxxxxx