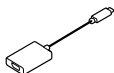
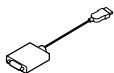
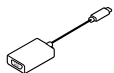
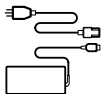


ThinkPad[®] P53

Setup Guide

Lenovo

Unpack



* Lenovo USB-C to VGA Adapter

* Lenovo HDMI to VGA Adapter

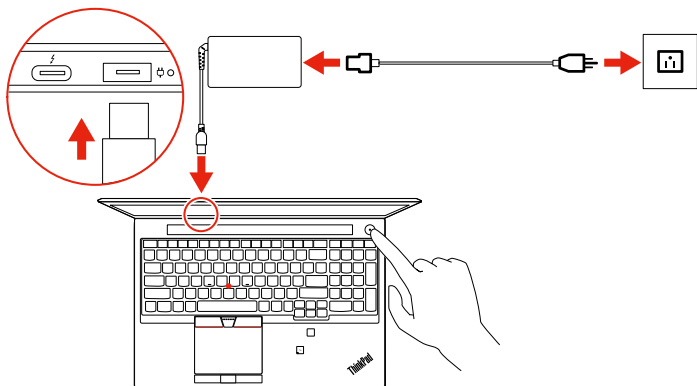
* Lenovo USB-C to DisplayPort Adapter



* Lenovo Pen Pro, Pen Holder, USB-C Cable

* For selected models

Initial Setup



- * 1. Infrared (IR) LED
- * 2. ThinkShutter
- * 3. Camera with IR function
4. Microphones
- * 5. Camera
6. Power button
7. Security-lock slot
- * 8. Nano-SIM-card slot
9. USB-C™ connector (USB 3.1 Gen 1)
10. Audio connector
11. Numeric keypad
12. Fingerprint reader
- * 13. NFC label
14. Power connector
15. Thunderbolt™ 3 connectors (USB-C)
16. Ethernet connector
17. Trackpad with buttons
18. TrackPoint® buttons
- * 19. Smart-card slot
20. SD-card slot
21. USB 3.1 connector Gen 1
22. Always On USB 3.1 connector Gen 1
23. HDMI™ connector
24. TrackPoint pointing stick
25. Wireless-status indicator
26. Device-access-status indicator
- * 27. Multi-touch screen

* For selected models

 Read the statement on USB transfer rate in the *User Guide*. Refer to the *Safety and Warranty Guide* for accessing the *User Guide*.

Customer Replacement Units (CRUs)

- ac power adapter
- Bottom cover
- Coin-cell battery
- * • Hard disk drive
- * • Hard disk drive bracket
- Memory module under the bottom cover
- * • M.2 solid-state drive
- * • Nano-SIM card tray
- Pointing-stick nonslip cap
- Power cord
- * • Thermal pad
- Keyboard
- * • Hard disk drive cable
- * • Wireless WAN card

* for selected models

Refer to the *User Guide* for CRU definition.

Additional information

European Union – compliance with the Radio Equipment Directive

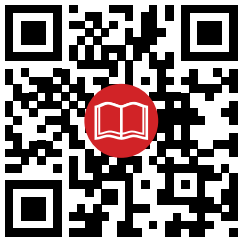
Hereby, Lenovo (Singapore) Pte. Ltd., declares that the radio equipment type ThinkPad P53 is in compliance with Directive 2014/53/EU.

The full text of the system EU declaration of conformity and the EU wireless module declarations are available at the following Internet addresses:

- For notebook computers:
<https://www.lenovo.com/eu-doc-notebooks>
- For tablets:
<https://www.lenovo.com/eu-doc-tablets>

This radio equipment operates with the following frequency bands and maximum radio-frequency power:

Technology	Frequency band [MHz]	Maximum transmit power
WLAN 802.11b/g/n/ax	2400 - 2483.5	< 20 dBm
WLAN 802.11a/n/ac/ax	5150 - 5725	< 23 dBm
WLAN 802.11a/n/ac/ax	5725 - 5875	< 13,98 dBm
Bluetooth BR/EDR/LE	2400 - 2483.5	< 20 dBm
WWAN UMTS	1/8	< 24.5 dBm
WWAN LTE	1/3/7/8/20/28	< 24 dBm
NFC	13.56	< -5,31 dB μ A/m @10m



Second Edition (January 2020)

© Copyright Lenovo 2020.

LIMITED AND RESTRICTED RIGHTS NOTICE: If data or software is delivered pursuant to a General Services Administration "GSA" contract, use, reproduction, or disclosure is subject to restrictions set forth in Contract No. GS-35F-05925.

Reduce | Reuse | Recycle



For Barcode Position Only

Printed in China
PN: XXXXXXX