

# ThinkPad.

L390 / L390 Yoga

S2 4th Gen / S2 Yoga 4th Gen

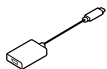
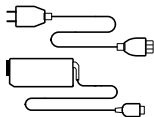
## Setup Guide

The Lenovo logo is a red vertical rectangle with the word "Lenovo" written in white, oriented vertically from bottom to top.

Lenovo

# Unpack

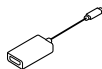
---



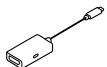
\* Lenovo USB-C  
to DisplayPort  
Adapter



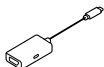
\* Lenovo USB-C  
to Ethernet  
Adapter



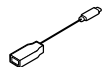
\* Lenovo USB-C  
to HDMI  
Adapter



\* Lenovo USB-C  
to HDMI plus  
Power Adapter



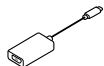
\* Lenovo USB-C  
to VGA plus  
Power Adapter



\* Lenovo USB-C  
to USB-A  
Adapter



\* Lenovo USB-C  
to USB-C Cable

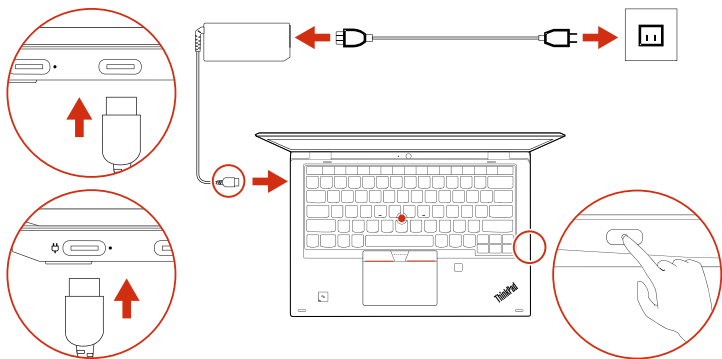


\* Lenovo USB-C  
to VGA  
Adapter

\* For selected models

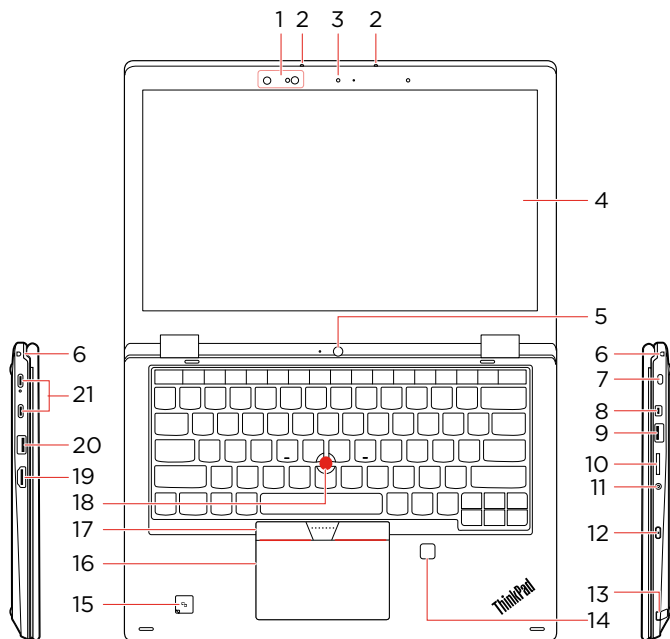
# Initial Setup

---



# Overview

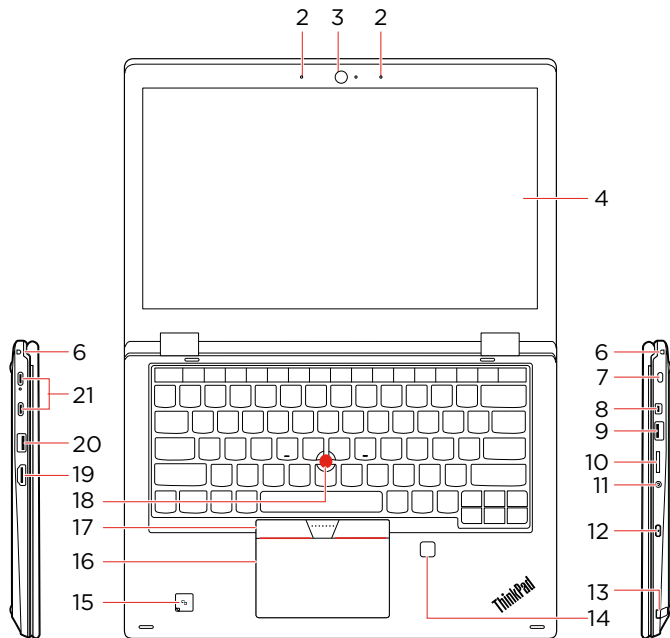
## L390 Yoga / S2 Yoga 4th Gen



# Overview

---

## L390 / S2 4th Gen



# Overview

---

- \* 1. Infrared camera
2. Microphones
3. Front camera
- \* 4. Multi-touch screen
- \* 5. Rear camera
6. Pen tether hole
7. Security-lock slot
8. Mini Ethernet connector
9. USB 3.1 connector Gen 1
10. microSD card slot
11. Audio connector
12. Power button
13. Pen slot
- \* 14. Fingerprint reader
- \* 15. NFC mark
16. Trackpad
17. TrackPoint® buttons
18. TrackPoint pointing stick
19. HDMI™ connector
20. Always On USB 3.1 connector Gen 1
21. USB-C™ connector

\* For selected models



Read the statement on USB transfer rate in the *User Guide*. Refer to the *Safety and Warranty Guide* for accessing the *User Guide*.

# Customer Replacement Units (CRUs)

---

- ac power adapter
- Base cover assembly
- \* • ThinkPad Pen Pro
- Power cord
- Coin-cell battery
- Keyboard
- M.2 solid-state drive
- \* • M.2 solid-state drive bracket
- Memory module
- Wireless LAN card

\* for selected models

Refer to the *User Guide* for CRU definition.

## Additional information

---

### Specific Absorption Rate (ICNIRP)

YOUR DEVICE MEETS INTERNATIONAL GUIDELINES FOR EXPOSURE TO RADIO WAVES.

Your device is a radio transmitter and receiver. It is designed not to exceed the limits for exposure to radio waves (radio frequency electromagnetic fields) recommended by international guidelines. The guidelines were developed by an independent scientific organization (ICNIRP) and include a substantial safety margin designed to assure the safety of all persons, regardless of age and health.

The radio wave exposure guidelines use a unit of measurement known as the Specific Absorption Rate, or SAR. The Europe 10g SAR limit for mobile devices is 2.0 W/kg. Tests for SAR are conducted using standard operating positions with the device transmitting at its highest certified power level in all tested frequency bands. The highest SAR values under the ICNIRP guidelines for your device are as follows:

**Maximum body-worn SAR with 0 mm separation distance: 0.995 W/kg**

During use, the actual SAR values for your device are usually well below the values stated. This is because, for purposes of system efficiency and to minimize interference on the network, the operating power of your mobile device is automatically decreased when full power is not needed for the data connection. The lower the power output of the device, the lower its SAR value.

If you are interested in further reducing your RF exposure then you can easily do so by limiting your usage or simply keeping the device away from the body.



## European Union – compliance with the Radio Equipment Directive

Hereby, Lenovo (Singapore) Pte. Ltd., declares that the radio equipment type ThinkPad L390, ThinkPad L390 Yoga, ThinkPad S2 4th Gen, and ThinkPad S2 Yoga 4th Gen are in compliance with Directive 2014/53/EU.

The full text of the system EU declaration of conformity and the EU wireless module declarations are available at the following Internet addresses:

- For notebook computers:  
<https://www.lenovo.com/eu-doc-notebooks>
- For tablets:  
<https://www.lenovo.com/eu-doc-tablets>

This radio equipment operates with the following frequency bands and maximum radio-frequency power:

<b>Technology</b>	<b>Frequency band [MHz]</b>	<b>Maximum transmit power</b>
WLAN 802.11b/g/n	2400 - 2483.5	< 20 dBm
WLAN 802.11a/n/ac	5150 - 5725	< 23 dBm
WLAN 802.11a/n/ac	5725 - 5875	< 13.98 dBm
Bluetooth BR/EDR/LE	2400 - 2483.5	< 20 dBm
NFC	13.56	< -5.31 dB $\mu$ A/m @10m



---

**Second Edition (January 2020)**

**© Copyright Lenovo 2020.**

LIMITED AND RESTRICTED RIGHTS NOTICE: If data or software is delivered pursuant to a General Services Administration "GSA" contract, use, reproduction, or disclosure is subject to restrictions set forth in Contract No. GS-35F-05925.

**Reduce | Reuse | Recycle**



For Barcode Position Only

Printed in China