

**ThinkPad** E15

# Setup Guide

**Lenovo**

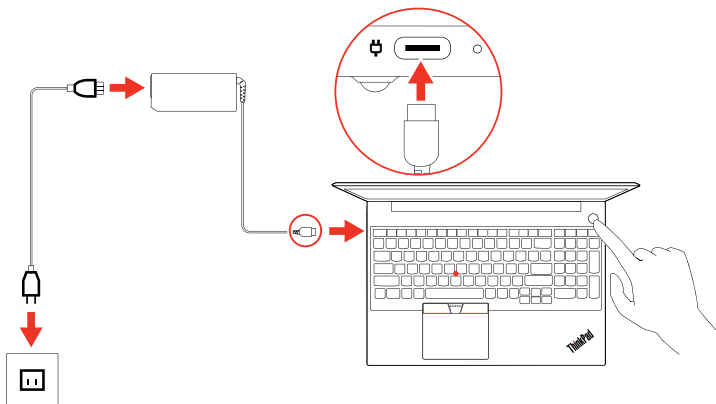
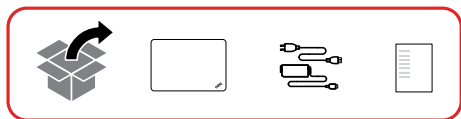
For Barcode Position Only

Printed in China

PN: SPXXXXXXX

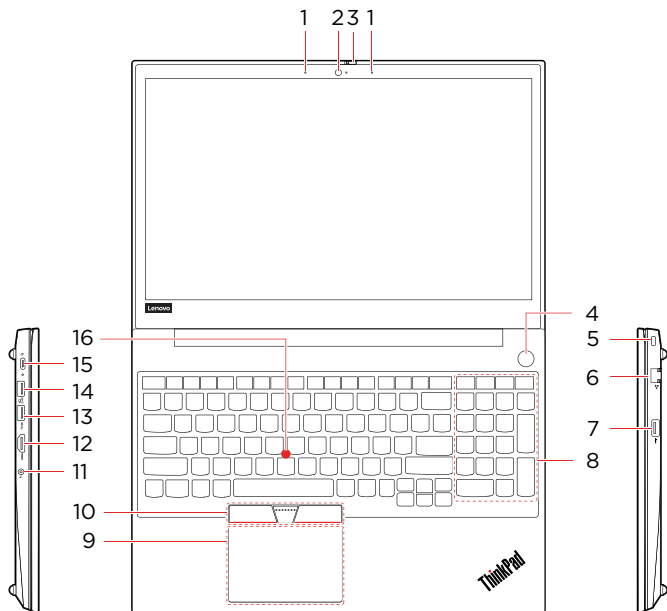
# Initial Setup

---



# Overview

---



1. Microphones
2. Camera
- \* 3. ThinkShutter
4. Power button with or without fingerprint reader
5. Security-lock slot
6. Ethernet connector
7. USB 2.0 connector
8. Numeric keypad
9. Trackpad
10. TrackPoint® buttons
11. Audio connector
12. HDMI™ connector
13. USB 3.1 connector Gen 1
14. Always On USB 3.1 connector Gen 1
15. USB-C™ connector
16. TrackPoint pointing stick

 Read the statement on USB transfer rate in the *User Guide*. Refer to the *Safety and Warranty Guide* for accessing the *User Guide*.

# Customer Replacement Units (CRUs)

---

- ac power adapter
- Power cord
- Base cover assembly
- Memory module
- \* • Hard disk drive
- \* • Hard disk driver bracket
- \* • Hard disk driver cable
- \* • M.2 solid-state drive
- \* • M.2 solid-state drive bracket
- Speaker assembly

\* For selected models

Refer to the *User Guide* for CRU definition.

# Additional information

---

## Specific absorption rate for European Union

YOUR DEVICE MEETS INTERNATIONAL GUIDELINES FOR EXPOSURE TO RADIO WAVES.

The Europe 10g Specific Absorption Rate (SAR) limit for mobile devices is 2.0 W/kg. To view your product specific SAR value, go to <https://support.lenovo.com/us/en/solutions/sar>.

If you are interested in further reducing your RF exposure then you can easily do so by limiting your usage or simply keeping the device away from the body.

## European Union – compliance with the Radio Equipment Directive

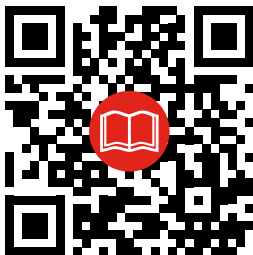
Hereby, Lenovo (Singapore) Pte. Ltd., declares that the radio equipment type ThinkPad E15 is in compliance with Directive 2014/53/EU.

The full text of the system EU declaration of conformity is available at the following Internet address:

<https://www.lenovo.com/us/en/compliance/eu-doc>

This radio equipment operates with the following frequency bands and maximum radio-frequency power:

Technology	Frequency band [MHz]	Maximum transmit power
WLAN 802.11b/g/n/ax	2400 - 2483.5	< 20 dBm
WLAN 802.11a/n/ac/ax	5150 - 5725	< 23 dBm
WLAN 802.11a/n/ac/ax	5725 - 5875	< 13.98 dBm
Bluetooth BR/EDR/LE	2400 - 2483.5	< 20 dBm



---

**Third Edition (December 2019)**

**© Copyright Lenovo 2019.**

LIMITED AND RESTRICTED RIGHTS NOTICE: If data or software is delivered pursuant to a General Services Administration "GSA" contract, use, reproduction, or disclosure is subject to restrictions set forth in Contract No. GS-35F-05925.

**Reduce | Reuse | Recycle**

