

ThinkPad E14/R14/S3 Gen 2

Setup Guide

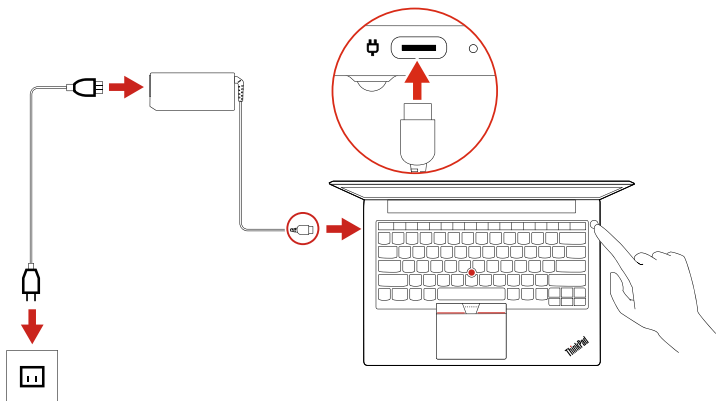
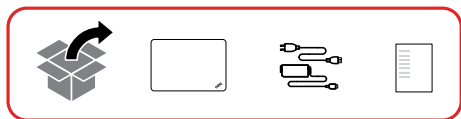
Lenovo

For Barcode Position Only

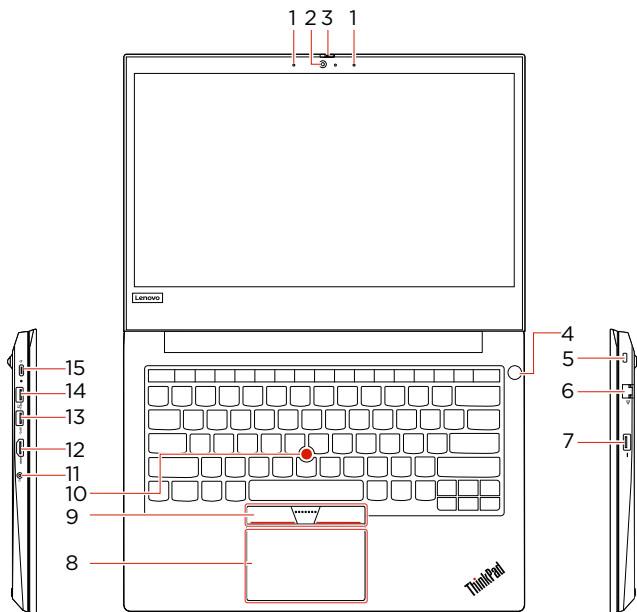
Printed in China

PN: SPXXXXXXX

Initial Setup



Overview



1. Microphones
2. Camera
- * 3. ThinkShutter
4. Power button with or without fingerprint reader
5. Security-lock slot
6. Ethernet connector
7. USB 2.0 connector
8. Trackpad
9. TrackPoint® buttons
10. TrackPoint pointing stick
11. Audio connector
12. HDMI™ connector
13. USB 3.1 connector Gen 1
14. Always On USB 3.1 connector Gen 1
15. USB-C™ connector (USB 3.1 Gen 1)

 Read the statement on USB transfer rate in the *User Guide*. Refer to the *Safety and Warranty Guide* for accessing the *User Guide*.

Customer Replacement Units (CRUs)

- ac power adapter
- Power cord
- Base cover assembly
- Memory module
- * • Hard disk drive
- * • Hard disk driver bracket
- * • Hard disk driver cable
- * • M.2 solid-state drive
- * • M.2 solid-state drive bracket
- Speaker assembly

* For selected models

Refer to the *User Guide* for CRU definition.

Additional information

Specific absorption rate for European Union

YOUR DEVICE MEETS INTERNATIONAL GUIDELINES FOR EXPOSURE TO RADIO WAVES.

The Europe 10g Specific Absorption Rate (SAR) limit for mobile devices is 2.0 W/kg. To view your product specific SAR value, go to <https://support.lenovo.com/us/en/solutions/sar>.

If you are interested in further reducing your RF exposure then you can easily do so by limiting your usage or simply keeping the device away from the body.

European Union – compliance with the Radio Equipment Directive

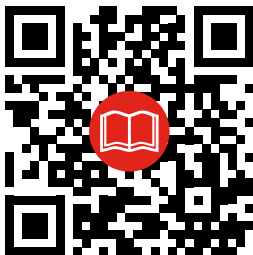
Hereby, Lenovo (Singapore) Pte. Ltd., declares that the radio equipment type ThinkPad E14/R14/S3 Gen 2 is in compliance with Directive 2014/53/EU.

The full text of the system EU declaration of conformity is available at the following Internet address:

<https://www.lenovo.com/us/en/compliance/eu-doc>

This radio equipment operates with the following frequency bands and maximum radio-frequency power:

Technology	Frequency band [MHz]	Maximum transmit power
WLAN 802.11b/g/n/ax	2400 - 2483.5	< 20 dBm
WLAN 802.11a/n/ac/ax	5150 - 5725	< 23 dBm
WLAN 802.11a/n/ac/ax	5725 - 5875	< 13.98 dBm
Bluetooth BR/EDR/LE	2400 - 2483.5	< 20 dBm



Third Edition (December 2019)

© Copyright Lenovo 2019.

LIMITED AND RESTRICTED RIGHTS NOTICE: If data or software is delivered pursuant to a General Services Administration "GSA" contract, use, reproduction, or disclosure is subject to restrictions set forth in Contract No. GS-35F-05925.

Reduce | Reuse | Recycle

