



# LDI SCCM Setup Guide



**Release Version: 2.13**

**Release Date: 14 April 2022**

## **Copyright/Disclaimer**

Copyright © 2022, Lenovo. All rights reserved.

This document contains proprietary information of Lenovo that is protected by copyright and other intellectual property law which restricts its usage. The content in this document is subject to change without notice. If you find any issues in the documentation, please report to us in writing. Lenovo gives no representations or warranties of any kind regarding its content, including accuracy or completeness. Please do not reproduce or transmit any part of this document in any form or by any means, electronic or mechanical, for any purpose, without a written approval from Lenovo.

# Contents

<b>1</b>	<b>SCCM Setup Guide .....</b>	<b>3</b>
1.1	Overview .....	3
1.2	Purpose.....	3
1.3	Prerequisite .....	3
1.4	Configure SCCM to Deploy LDI Windows (Physical) Package on the Devices in the Application Mode.....	3
1.4.1	<i>Create an Application.....</i>	<i>3</i>
1.4.1.1.	Add Deployment Type to the Application.....	4
1.4.1.2.	Select Deployment Setting.....	4
1.4.1.3.	Specify Content Settings for Delivery to Devices.....	5
1.4.1.4.	Specify Detection Rule .....	6
1.4.1.5.	Configure User Experience Settings.....	7
1.4.1.6.	Deploy the LDI Provisioning Package in SCCM to the Fleet of Devices.....	7
1.4.1.7.	Select Application for Deployment to the Device Group.....	8
1.4.1.8.	Specify Content Destination .....	9
1.4.1.9.	Known Issues.....	10
1.4.2	<i>Scheduling.....</i>	<i>10</i>
1.4.3	<i>User Experience.....</i>	<i>11</i>
1.4.4	<i>Alerts.....</i>	<i>11</i>
1.4.5	<i>SCCM Uninstall UDC Client.....</i>	<i>12</i>
1.4.5.1.	Select the Application to Uninstall.....	12
1.4.5.2.	Specify Content Destination .....	13
1.4.6	<i>Configure SCCM to Deploy LDI Windows (Physical) Package on the Devices in the Package Mode.....</i>	<i>13</i>
1.4.6.1.	Create a Package .....	13
1.4.6.2.	Create a Program .....	16
1.4.6.3.	Deploy Provisioning Package .....	20
1.4.6.4.	Specify Content Destination .....	22
1.4.6.5.	Deployment Settings.....	24
1.4.6.6.	User Experience .....	26
1.4.6.7.	Distributions Points.....	26
1.4.6.8.	Deploy LDI Windows (Virtual) Package via SCCM .....	27

# 1 SCCM Setup Guide

## 1.1 Overview

The LDI SCCM QSG chapter explains how to use System Center Configuration Manager (SCCM) to deploy the LDI Provisioning Package on the fleet of devices in your organization.

You can use following methods to deploy the package:

- Configure SCCM to deploy LDI Windows (Physical) Package on the Devices in the **Application Mode**
- Configure SCCM to deploy LDI Windows (Physical) Package on the Devices in the **Package Mode**

## 1.2 Purpose

You can configure SCCM to install the LDI Provisioning Package on all the devices in your organization and register them as per the Service License Agreement between your organization and LDI Solutions. Instead of installing the provisioning package on each device, you can use SCCM to run it on the entire fleet of device.

## 1.3 Prerequisite

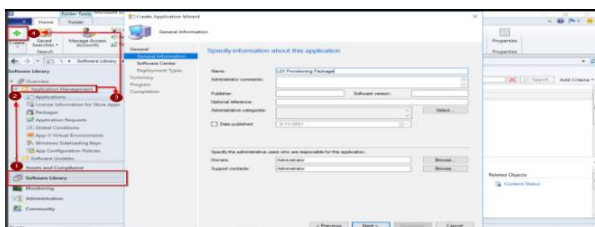
Download the LDI Provisioning Package on the device on which you want to configure SCCM and deploy the package on the entire fleet of devices in your organization. To know how to download and install the package, refer to [Onboard Your Fleet](#).

## 1.4 Configure SCCM to Deploy LDI Windows (Physical) Package on the Devices in the Application Mode

### 1.4.1 Create an Application

Copy the following files downloaded from the LDI Windows (Physical) package to a folder in the computer with an account of the site server that has READ permission.

- Udc\_setup.exe
- LenovoDeviceIntelligence-0.0.75.0.diagcab
- README.txt
- install-ldi.bat



In the SCCM account:

1. Click the **Software Library** tab. The Software Library window appears.
2. Click the **Applications Management** folder. The Application window appears.
3. Click **Applications**.

## Create Application Wizard

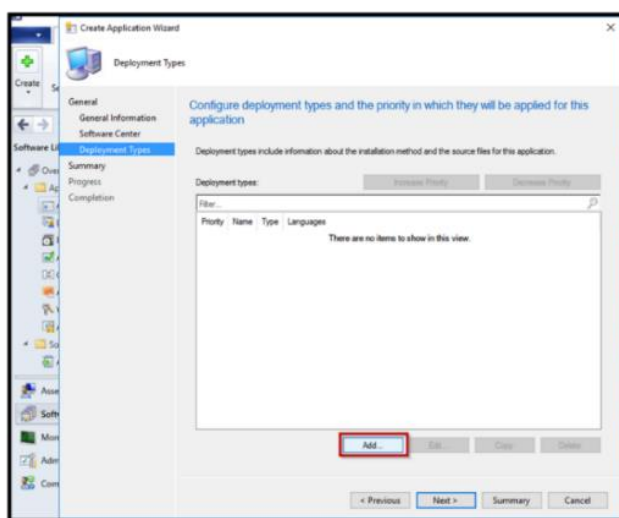
Enter information about a new application in the SCCM. Fill-in the name, version, and publisher of the application. You can also select the administrative owners (users) and category of the application.

4. Click **Create**. The **Create Application** window appears.

5. Click **Next**. The **Deployment Types** page appears.

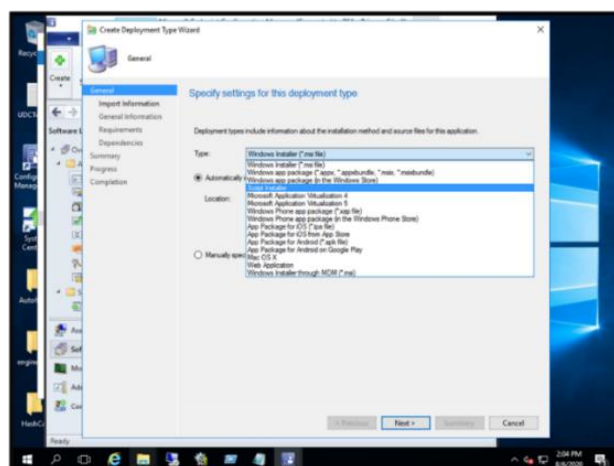
The new application is registered in SCCM. The next section **Deploy the Application** describes the steps to deploy the new application.

### 1.4.1.1. Add Deployment Type to the Application



In the **Deployment Types** page, click **Add** and then click **Next**. A window appears that shows a list of options.

### 1.4.1.2. Select Deployment Setting

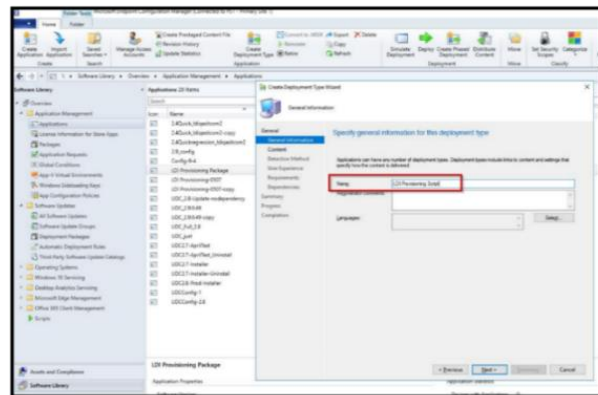


1. Select **Script Installer**.

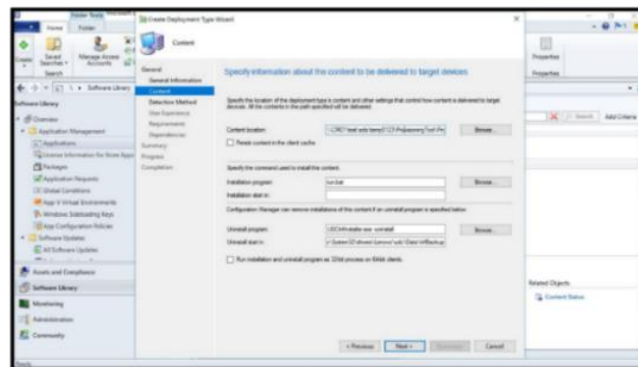
2. Click **Next**.

#### 1.4.1.3. Specify Content Settings for Delivery to Devices

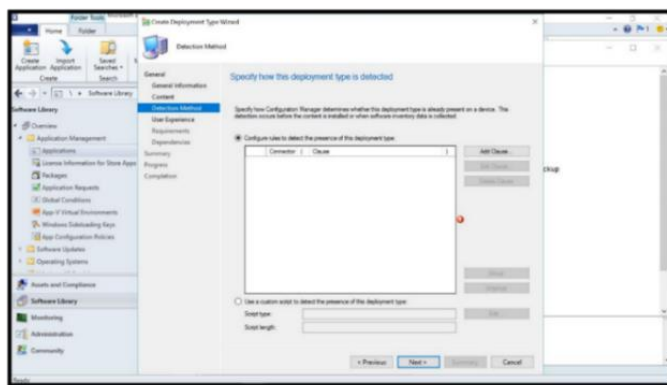
3. Enter **Name** of the application. For example, LDI Provisioning Script.
4. Click **Next**. The Content - the Create Deployment Type window appears.



5. In the **Content** page, specify the path of the folder that has all files.

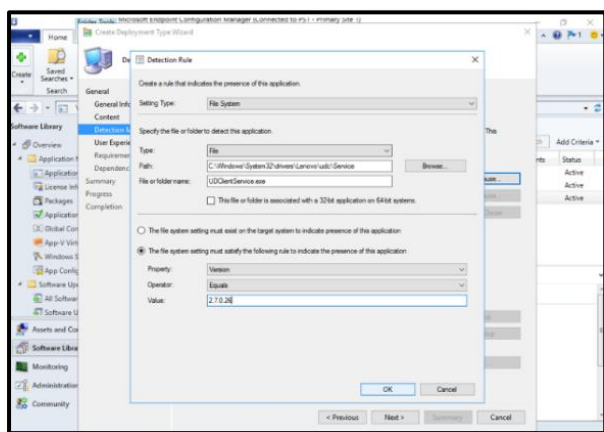


6. In the **installation program** field, enter the command - **install-ldi.bat**. If the target device is a virtual machine, then enter the command **Setup.exe /VERYSILENT**.
7. In the Uninstall program field, enter the command - UDCInflInstaller.exe -uninstall.
8. In the Uninstall start field, enter the command  
- **C:\Windows\System32\drivers\Lenovo\udc\Data\InfBackup**
9. Click **Next**. A window appears.
10. In the window, specify how the deployment type is detected.
11. Click **Add Clause**.



12. Click **Next**. The **Detection Rule** window appears.

#### 1.4.1.4. Specify Detection Rule



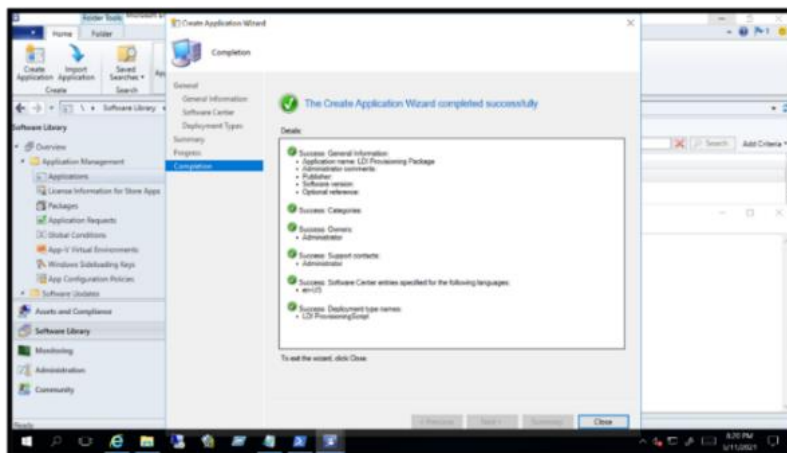
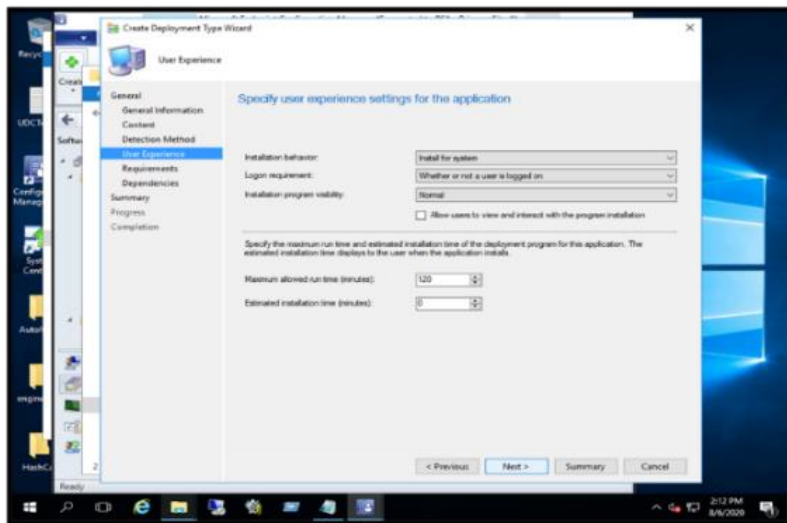
In the **Detection Rule** window, configure the detection rules as follows:

1. In the **Setting Type** field, select **File System**.
2. In the **Path** field, enter C:\Windows\System32\drivers\Lenovo\udc\Service.
3. In the **File or folder name** field, enter UDClientService.exe
4. Note: De-select the This file or folder is associated with a 32-bit application on 64-bit system checkbox.
5. Select The file system setting must satisfy the following rule to indicate the presence of this application radio button.
6. In the **Property** drop-down list, select **Version**.
7. In the **Operator** drop-down list, select **Equals**.
8. In the **Value** field, enter the current UDC version.
9. Click **OK**.
10. Click **Next**.

#### 1.4.1.5. Configure User Experience Settings

In the **User Experience** page, follow these steps:

1. In the Installation behavior field, select **Install for a system**.
2. In the Logon requirement field, select **Whether or not a user is logged on**.
3. In the Installation program visibility field, select **Normal**.
4. Click **Next**.

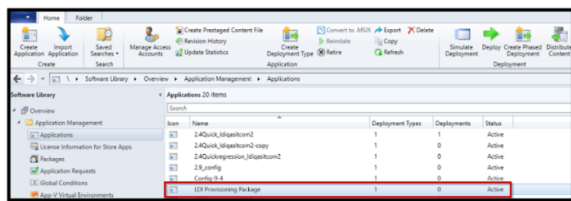


Complete the rest of the wizard to create the deployment type for the application.

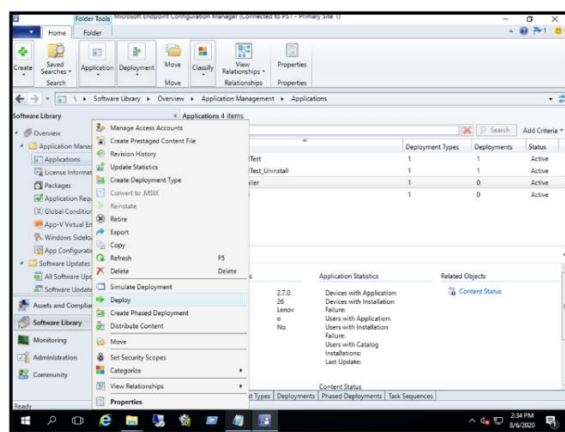
#### 1.4.1.6. Deploy the LDI Provisioning Package in SCCM to the Fleet of Devices

After you register the LDI provisioning pack and configure the deployment settings in the SCCM account, you must deploy or assign the application to a group or fleet of devices in the organization.

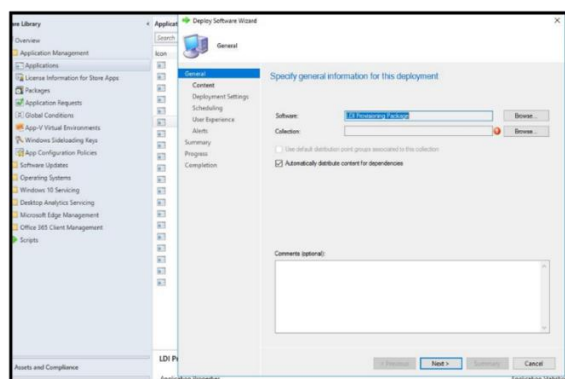
#### 1.4.1.7. Select Application for Deployment to the Device Group



1. Select the application. For example, LDI Provisioning Package.
2. Right-click the selected application. A pop-up window appears.



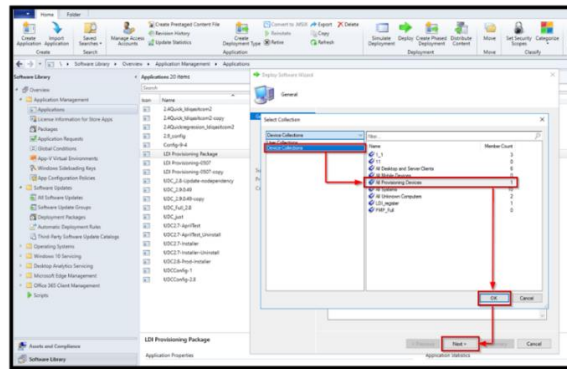
3. Click **Deploy**.



In the **General** page in the **Deploy Software Wizard**:

4. Click **browse** to select the software package. For example, LDI Provisioning Package.
5. In the **Collection** field, click **browse**. The **Select Collection** window appears.





6. In the **Select Collection** window, click **Device Collections**. A list of device collections appears.

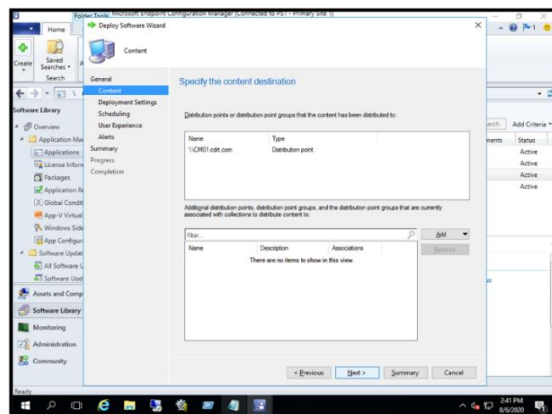
## Device Collection

The fleet or group of devices. For example, the fleet of devices in your organization that is to be onboarded to the LDI platform.

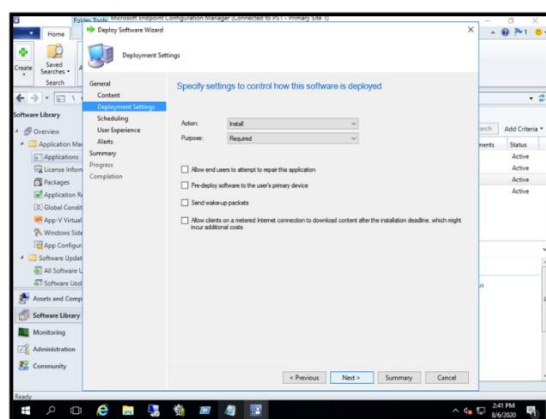
7. Click **OK** and then click **Next**.

### 1.4.1.8. Specify Content Destination

8. Specify the distribution point where the collection of devices is to be deployed.
9. Click **Next**.



10. Select the deployment settings for the software. For example, LDI Provisioning Package.



11. In the **Action** field, select **Install**.

12. in the **Purpose** field, select **Required**.

### Mandatory

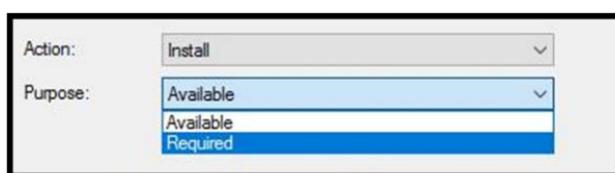
Select the **Required** option to install UDC Installer software.

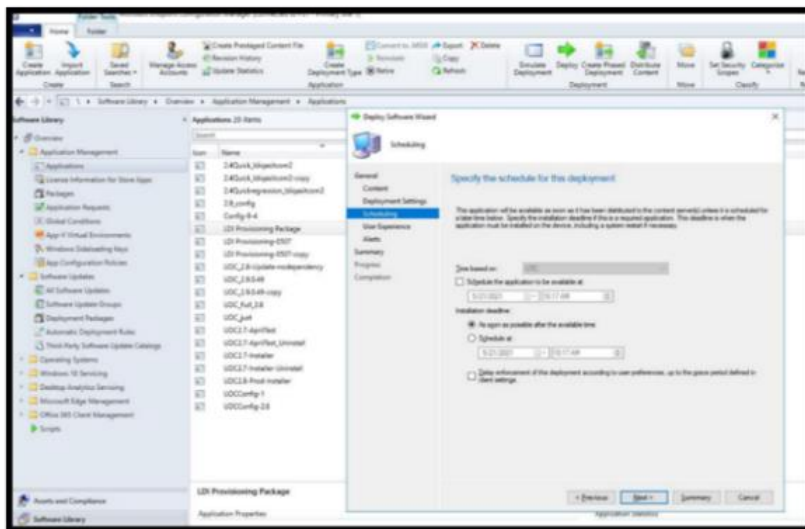
#### 1.4.1.9. Known Issues

Error Code	Error Description	Root Cause	Workaround
0x87D00324	When you test the SCCM deployment, a notification <b>Installation Failed</b> appears on end user's desktop, however the package is installed successfully.	The software detection rule was not found.	In the <b>Deploy Software Wizard</b> page, select <b>User Experience</b> . Then, in the <b>User notifications</b> drop-down list, select <b>Hide in Software Center and all notifications</b> .

#### 1.4.2 Scheduling

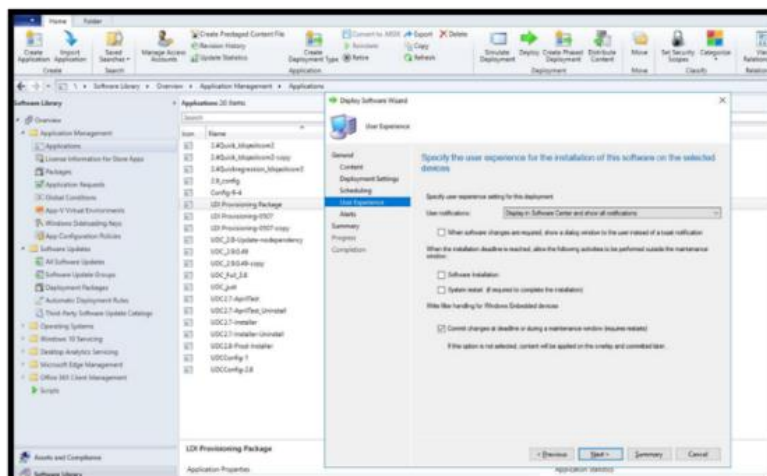
Leave the Scheduling settings as default.





### 1.4.3 User Experience

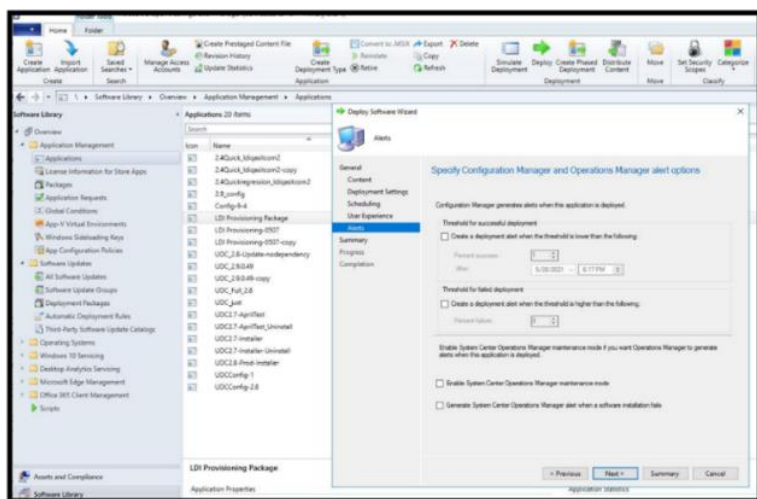
You are advised to leave the User Experience settings as default.



### 1.4.4 Alerts

You are advised to leave the Alerts settings as default. If you want to use the Alerts feature, then refer to the SCCM official user guide.

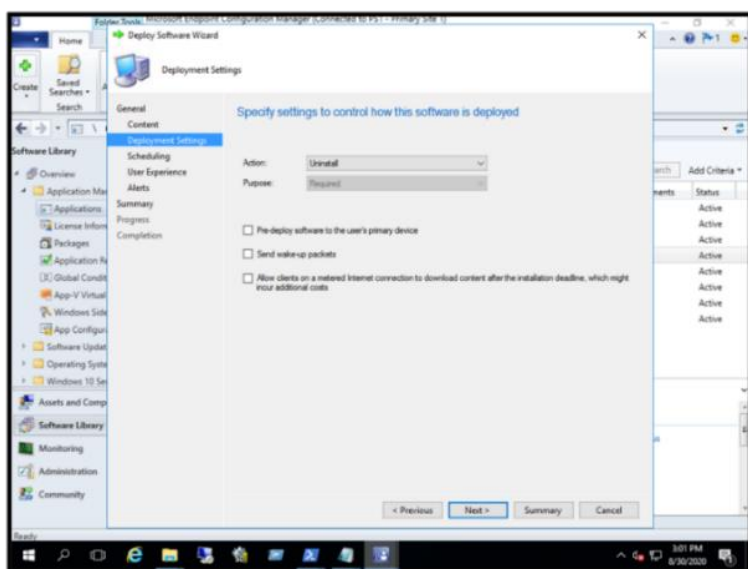
Complete the rest of the wizard to complete the deployment.



Verify if the devices in the Device Collection that are deployed with this application can successfully finish the installation.

Verify in the LDI portal if the devices are successfully activated.

#### 1.4.5 SCCM Uninstall UDC Client



To uninstall the LDI Agent, for example, UDC service, follow these steps:

##### 1.4.5.1 Select the Application to Uninstall

1. In the **Applications** tab, select the application.
2. Right-click the application.
3. Click **Deploy**.
4. Select the Group of Device.
5. Click Device Collection.
6. Select the Automatically distribute content for dependencies checkbox.

#### 1.4.5.2. Specify Content Destination

### Specify Settings to Control Software Deployment

Action: **Uninstall**

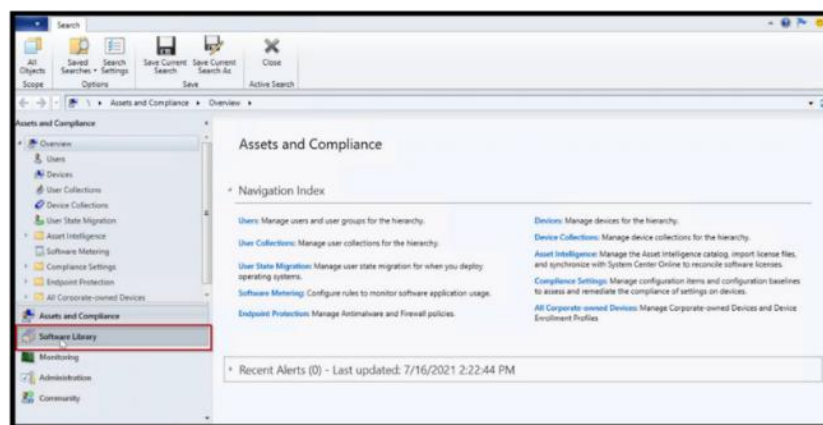
Purpose: **Required**

1. Complete the Uninstall Process.
2. Verify if the devices in the Device Collection that are deployed with this uninstall deployment, have UDC software uninstalled from them.
3. In the LDI portal, delete the devices before running the provisioning tool again.

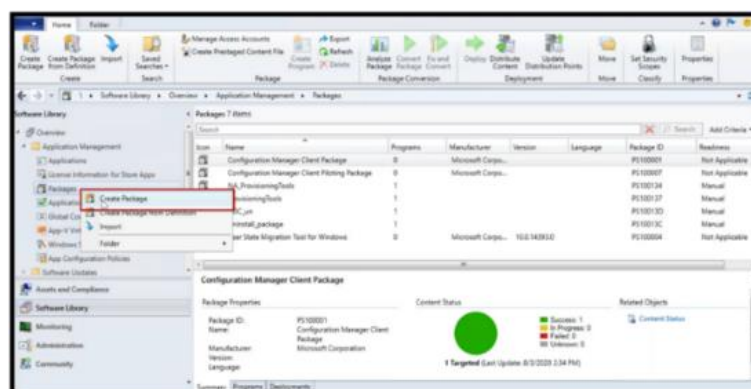
#### 1.4.6 Configure SCCM to Deploy LDI Windows (Physical) Package on the Devices in the Package Mode

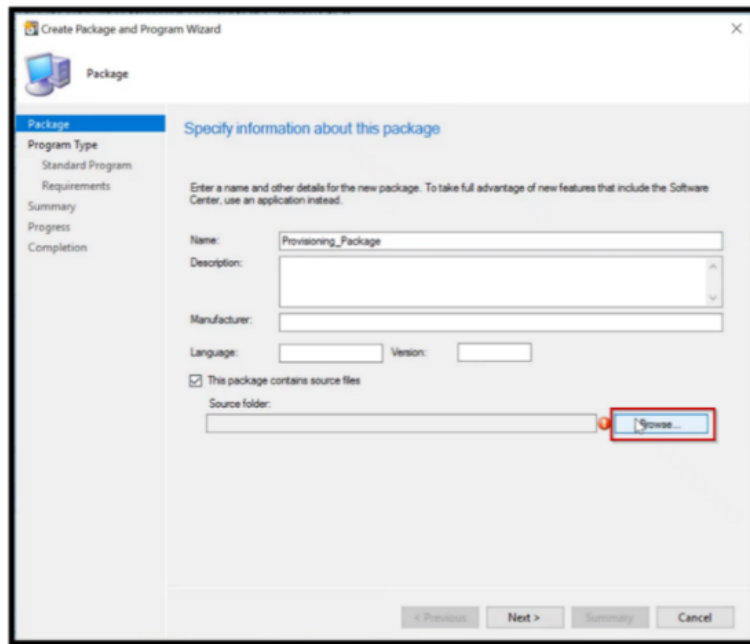
##### 1.4.6.1. Create a Package

1. Log in to the SCCM Account.
2. In the navigation menu, click **Software Library**. The **Software Library** window appears.

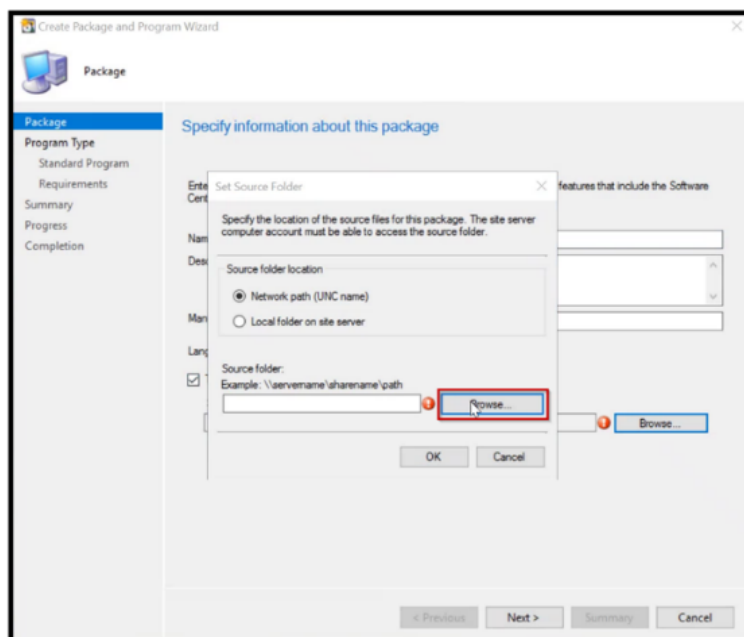


3. Click **Application Manager** folder to view the sub menu.
4. Right-click **Packages**.
5. Right-click **Create Package**. The form field appears where you can enter details about the package.

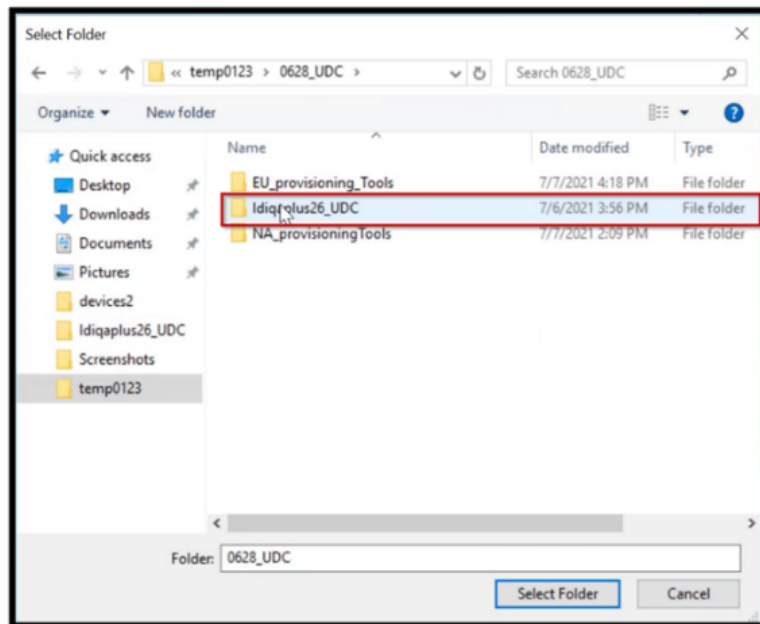




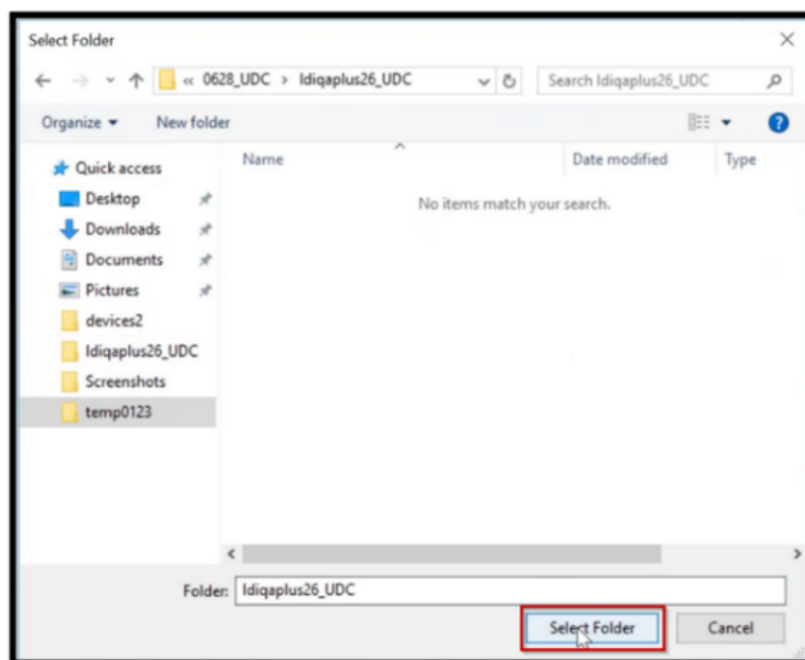
6. Enter the **name** of the package. For example, Provisioning Package.
7. Select the **checkbox**. This package contains the source file.
8. Click **Browse**.



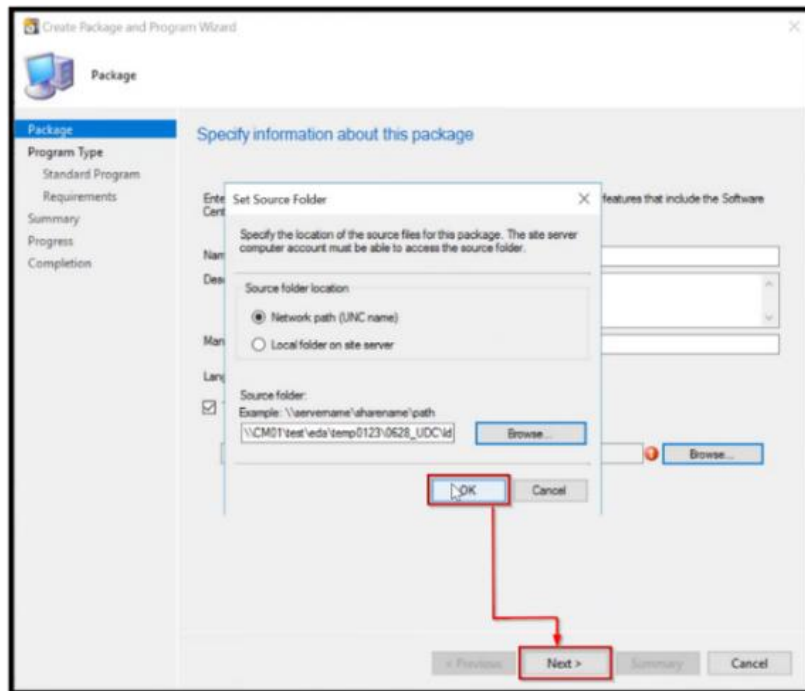
9. In the Create Package and Program Wizard window, click Browse.



10. Select the **folder**. For example, Idiplus26\_UDC.



11. Click **Select Folder**. A pop-up window appears.



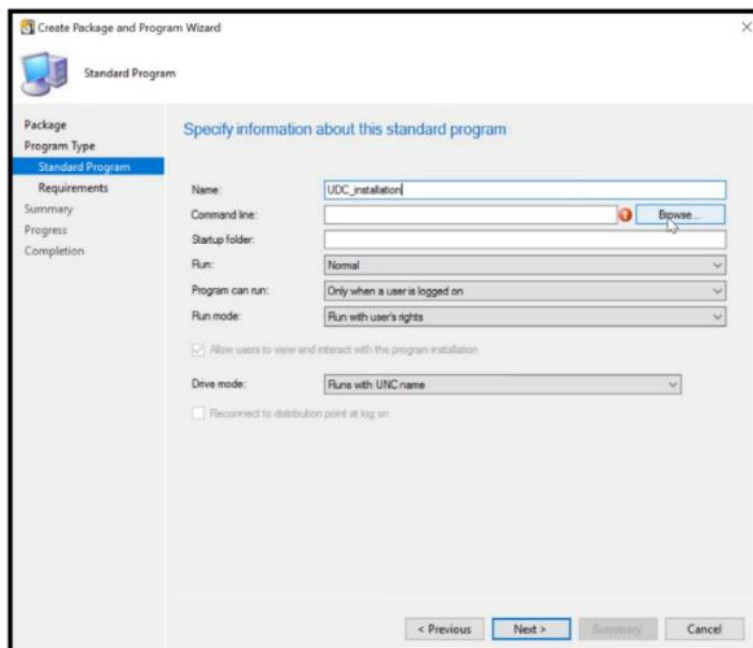
The window shows the path of the selected folder.

12. Click **OK**.

13. Click **Next**. In the **Program Type** section, select the type of program you want to create.

#### 1.4.6.2. Create a Program

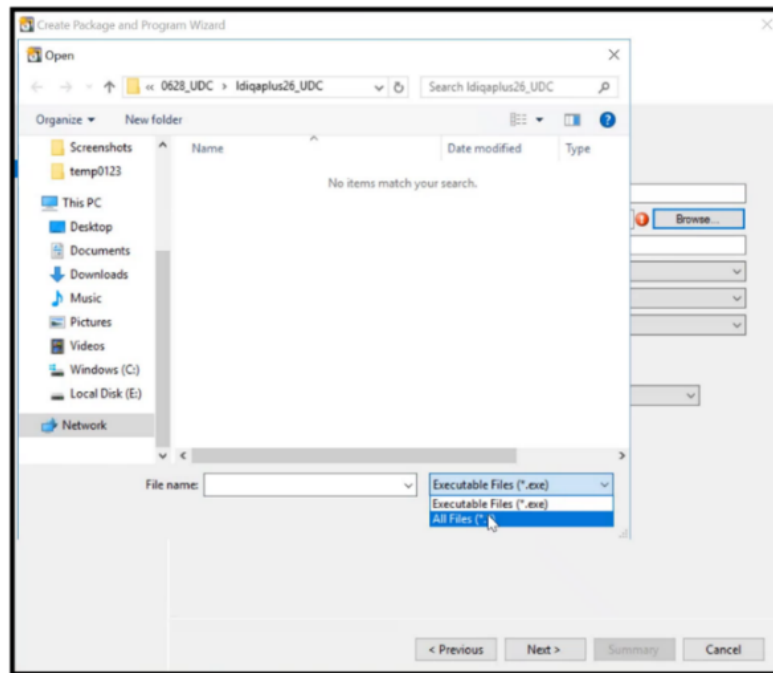
1. Select Standard program.
2. Select **Next**. You see form field for the creating the program.



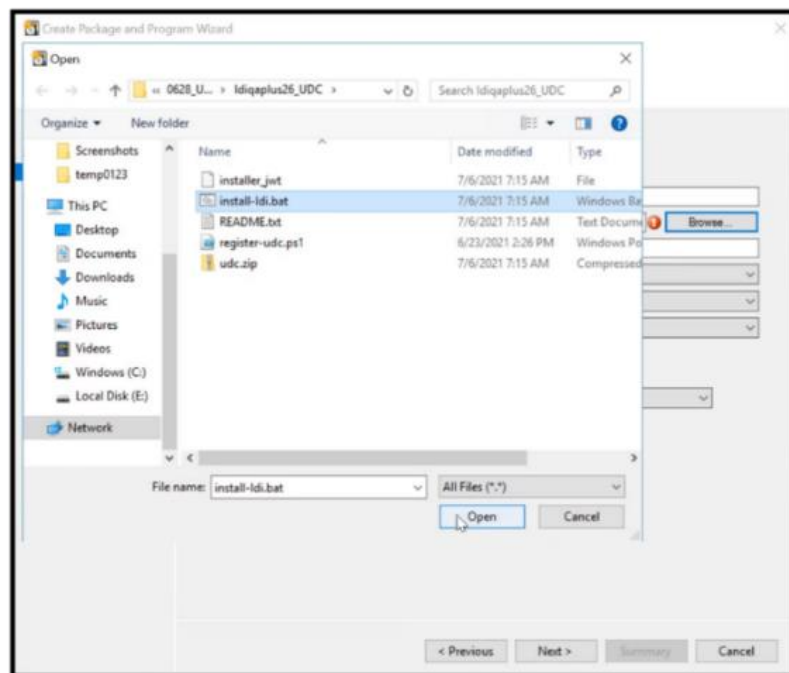
3. Enter the name of the program. For example, UDC\_Installation.



4. In the **Command line** field, click **Browse**. You see the following pop-up window.

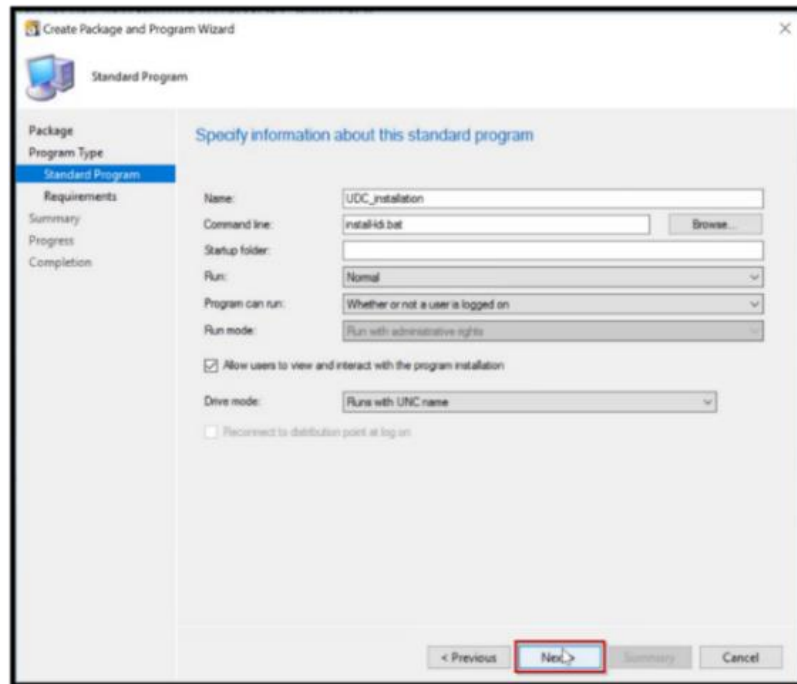


5. Select **All Files**. You see all the files.

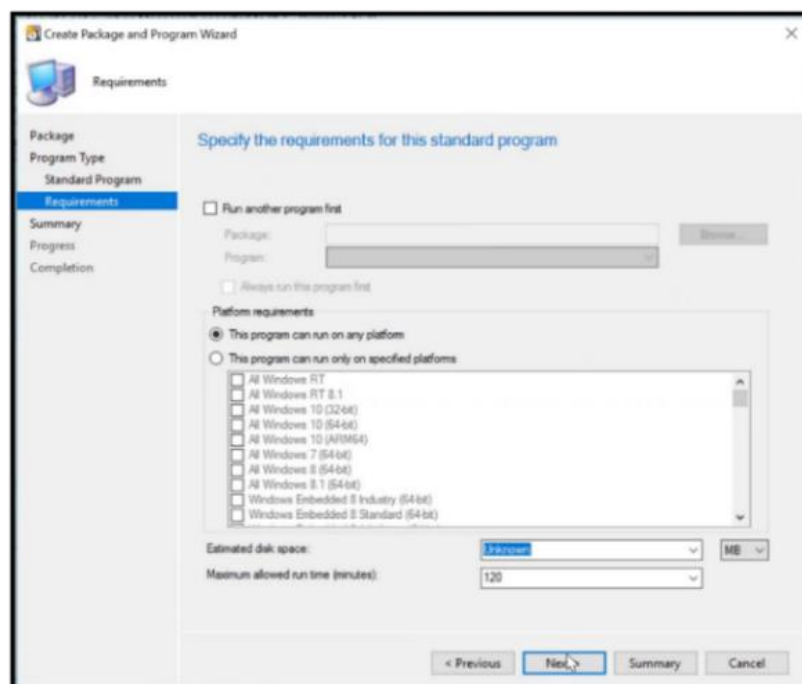


6. Select **install-ldi.bat**.

7. Select **Open**.

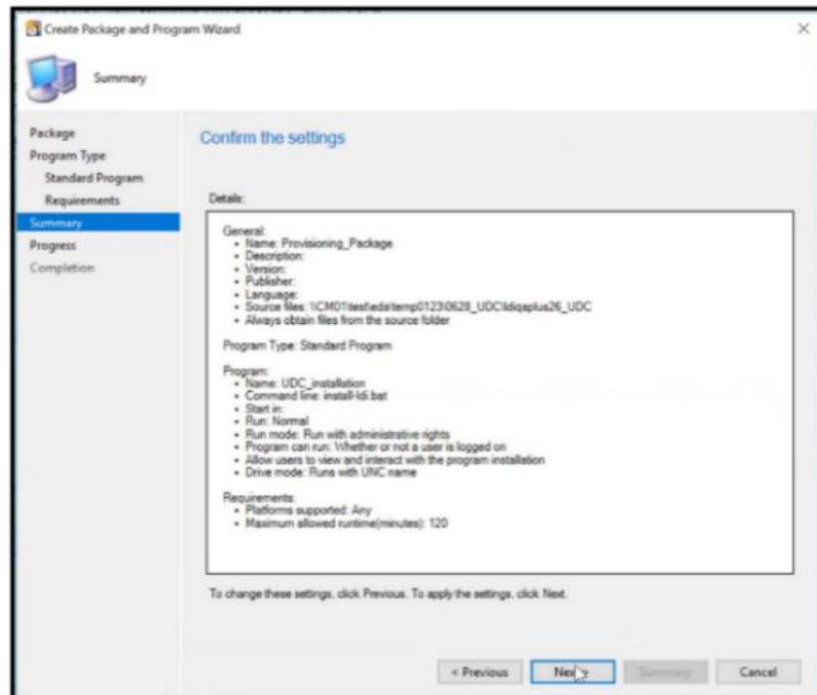


8. In the Program can run field, select Whether or not a user is logged on.
9. Select the checkbox - Allow users to view and interact with the program installation.
10. Click **Next**.

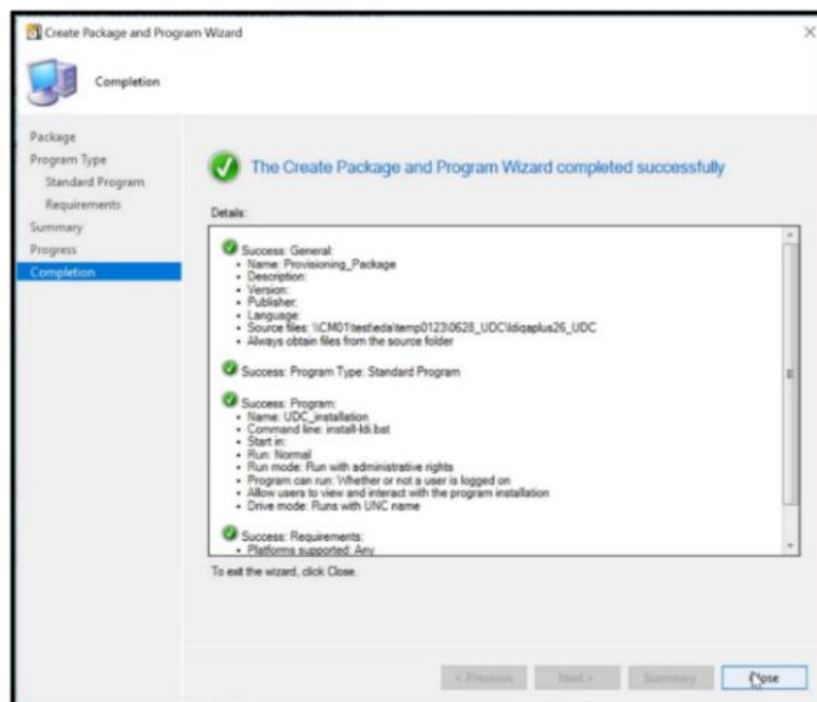


**Note:** In the **Requirements** section, keep the default settings, as shown in the screenshot.

11. Click **Next**.

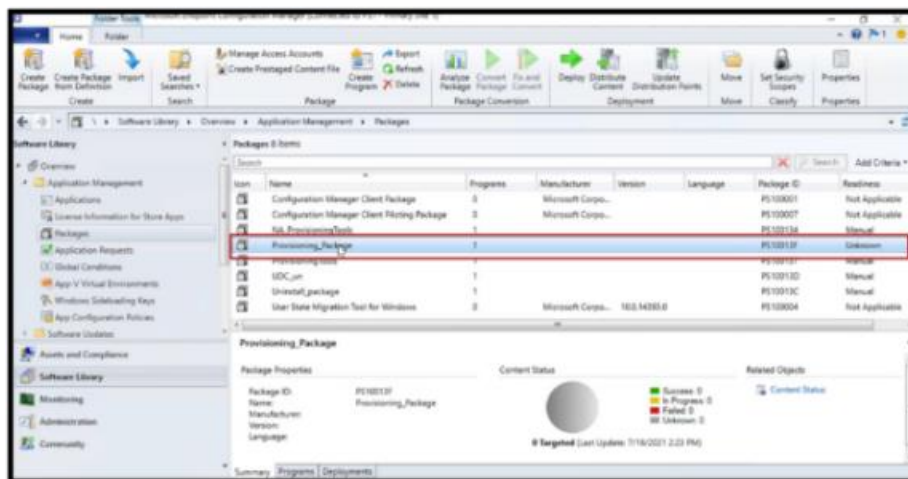


12. In the **Confirm settings** section, click **Next**, to confirm settings selected for creation of package and program.

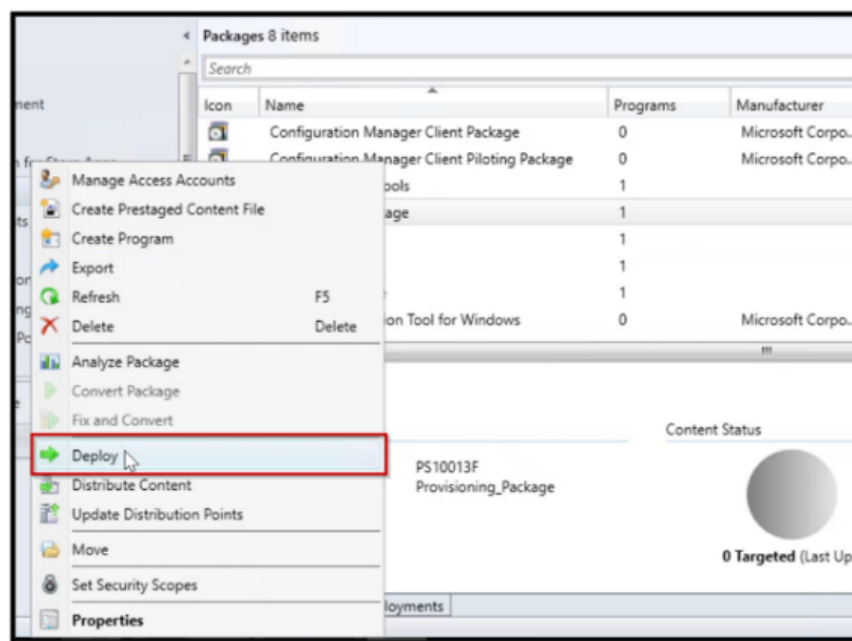


13. Click **Close** to close the wizard.

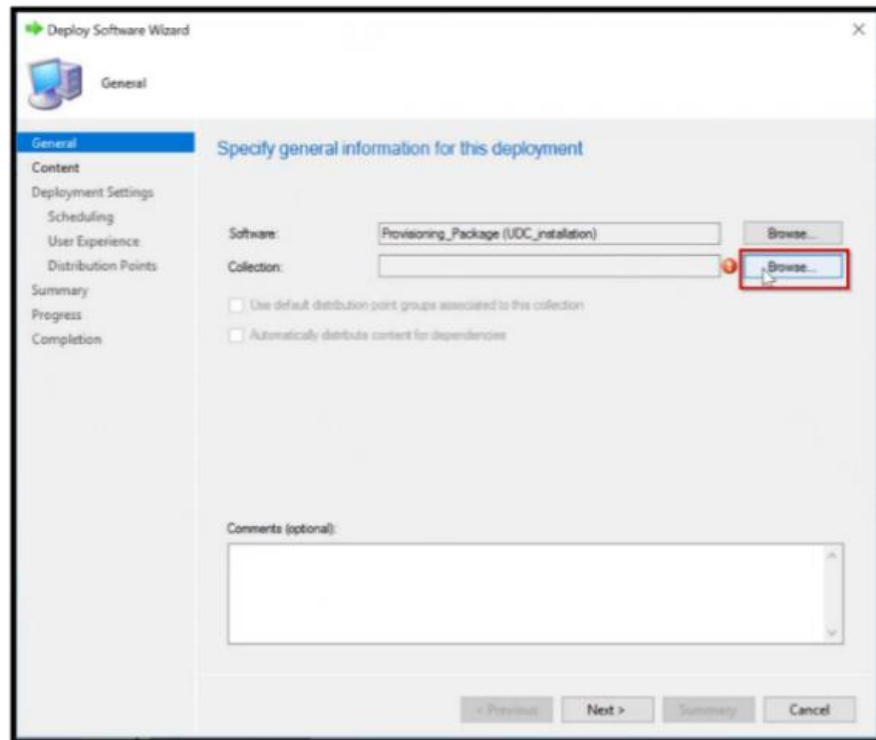
### 1.4.6.3. Deploy Provisioning Package



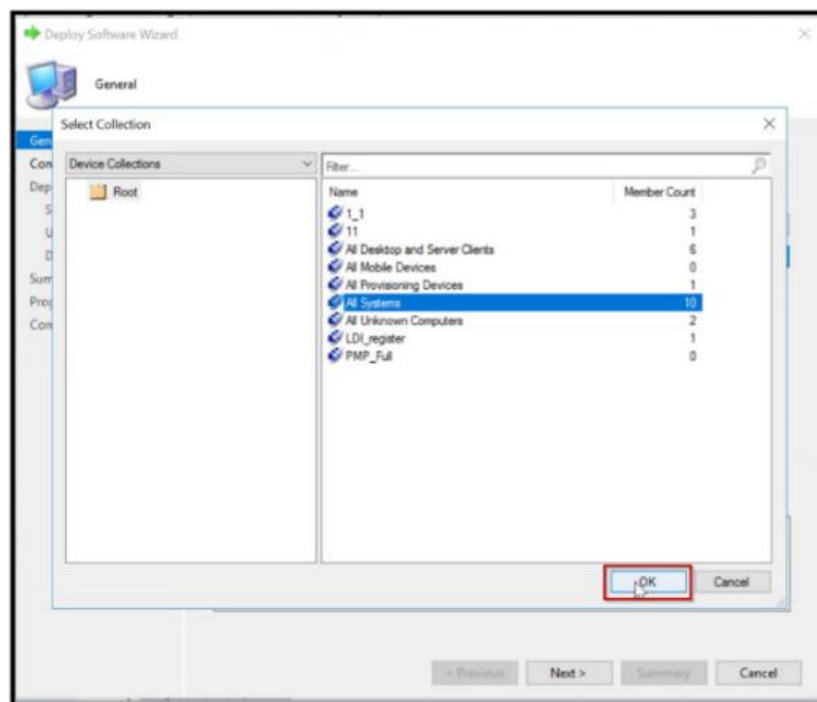
1. Select **Packages** in the navigation menu.
2. Right-click on the **package**. For example, Provisioning Package. A pop-up window appears.



3. Click **Deploy**. You see the General section where you can specify the type of deployment.

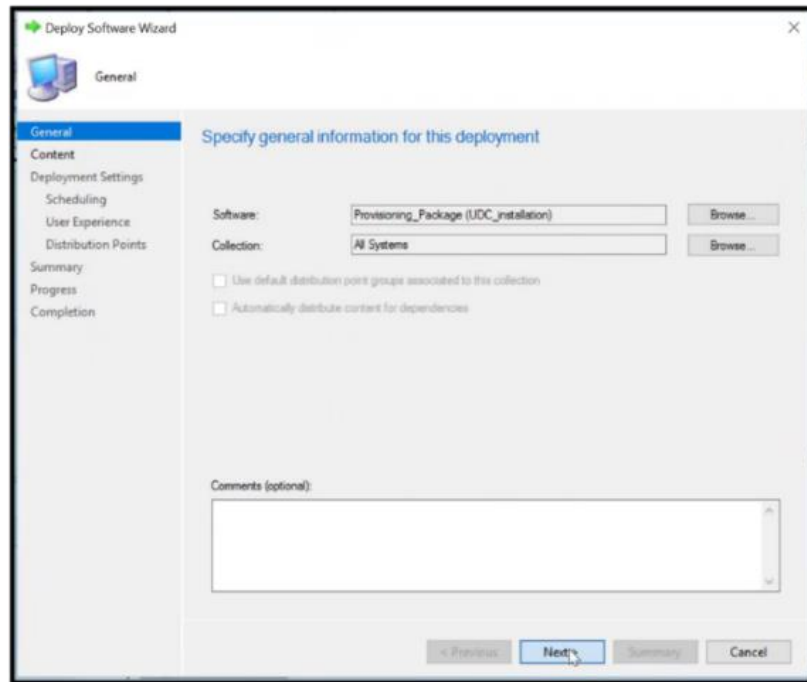


4. In the **Collection** field, click **Browse**. A pop-up window appears.



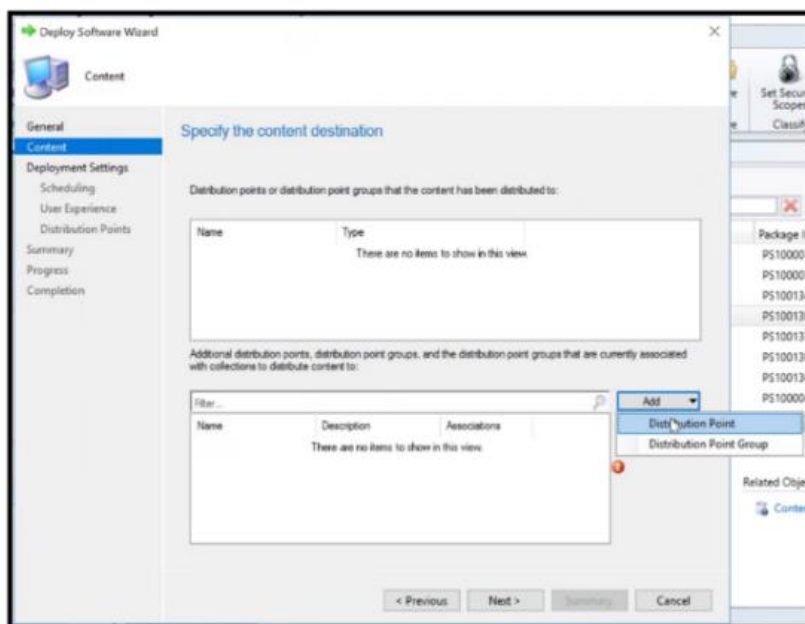
5. Select an option from the context menu in the pop-up window, e.g., All Systems.

6. Click **OK**.

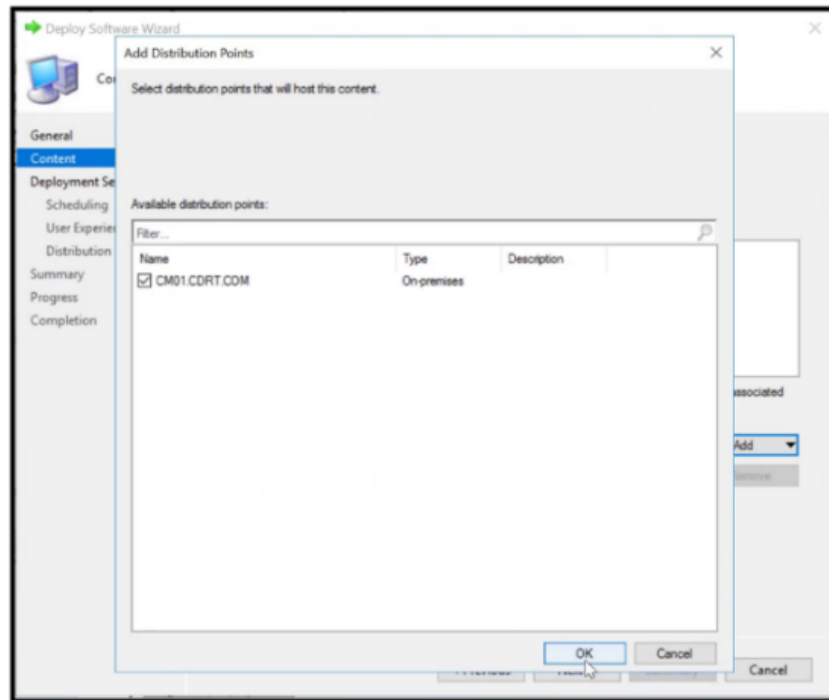


7. Click **Next**. The **Content** section appears.

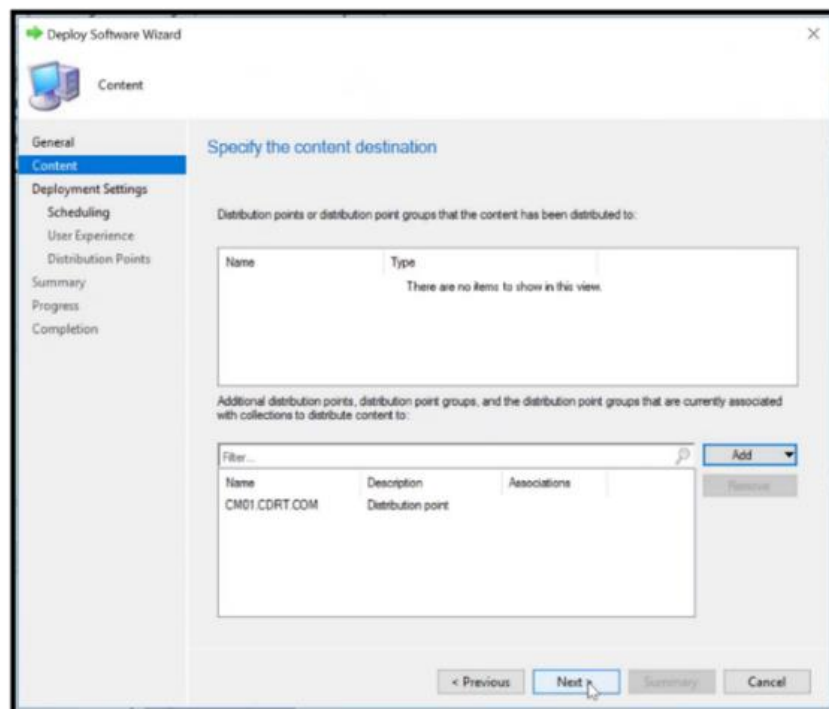
#### 1.4.6.4. Specify Content Destination



1. Click **Add** to view a drop-down menu.
2. Click **Distribution Point**. A pop-up window appears.

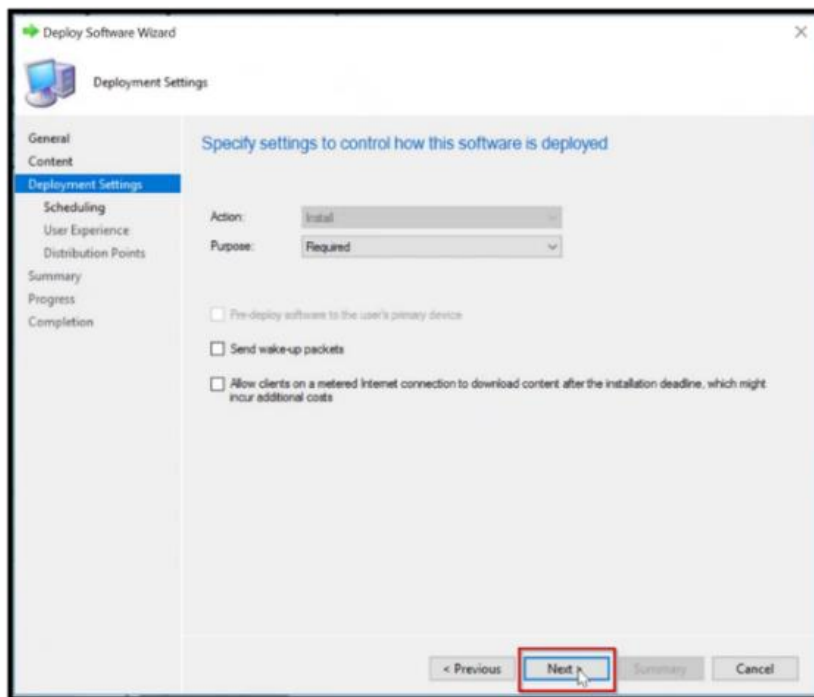


3. Select the **CM01.CRDT.COM** checkbox.
4. Click **OK**.

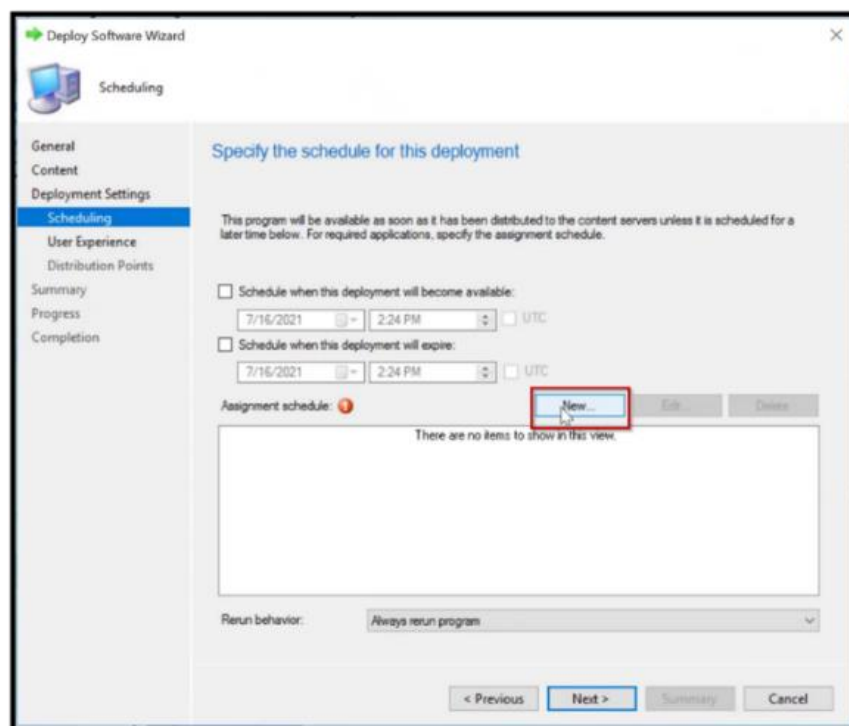


5. Click **Next**. The **Deployment Settings** section appears.

#### 1.4.6.5. Deployment Settings

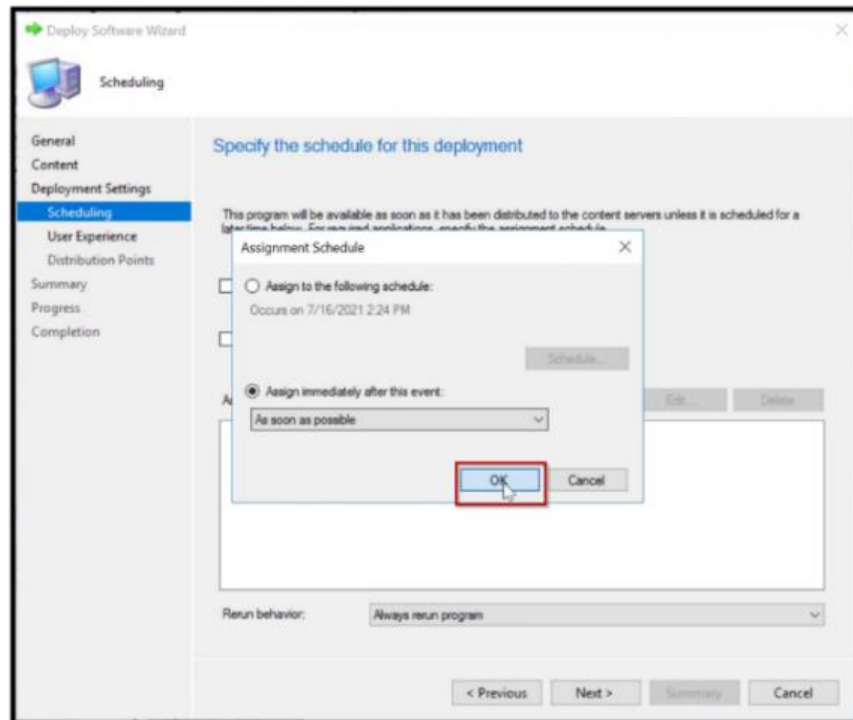


1. In the **Purpose** field, select **Required**.
2. Click **Next**. The Scheduling section appears.

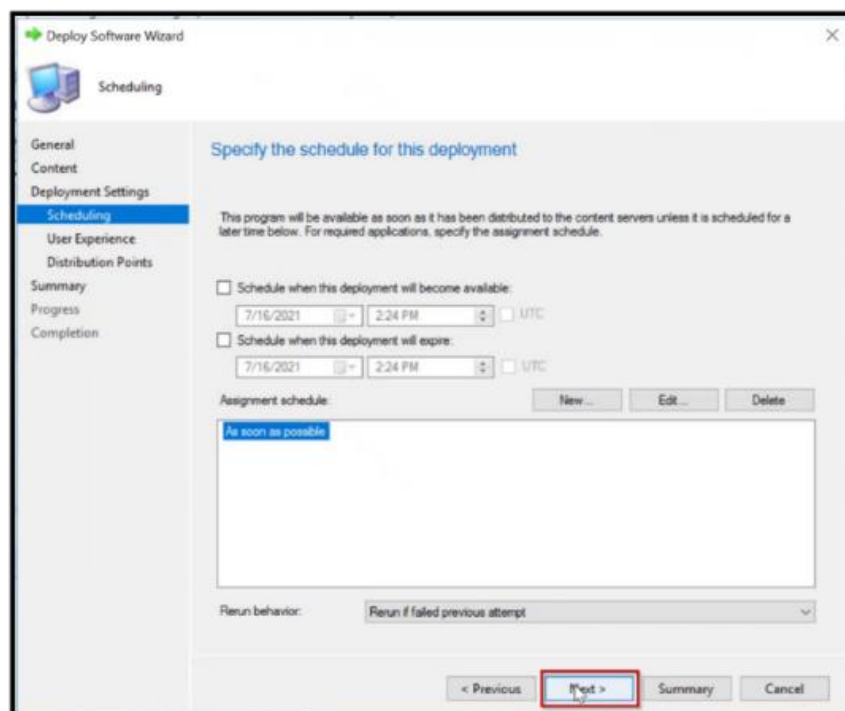


3. Click **New**. The **Deploy Software Wizard** appears.



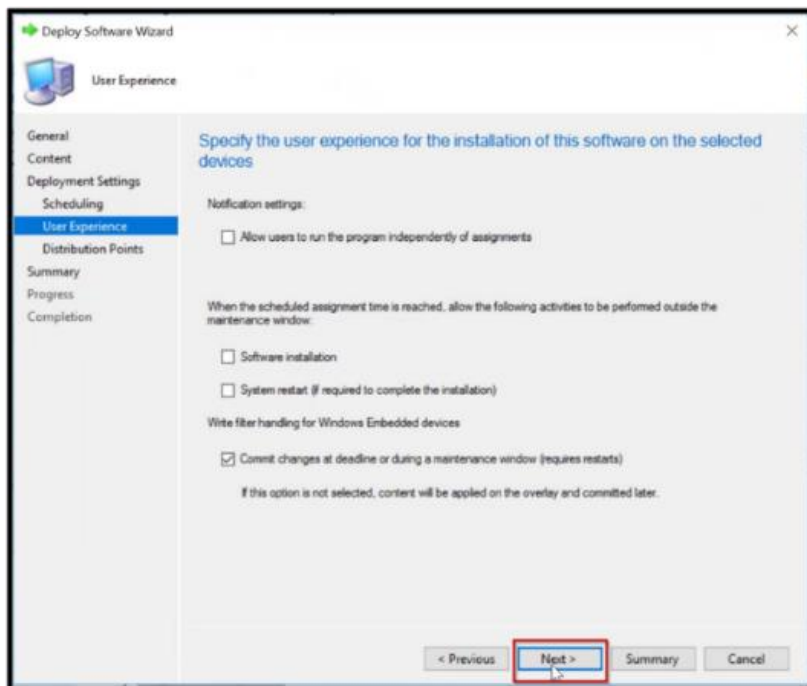


4. Select Assign immediately after this event.
5. Select **As soon as possible** from the drop-down list.
6. Click **OK**.



7. Click **Next**.

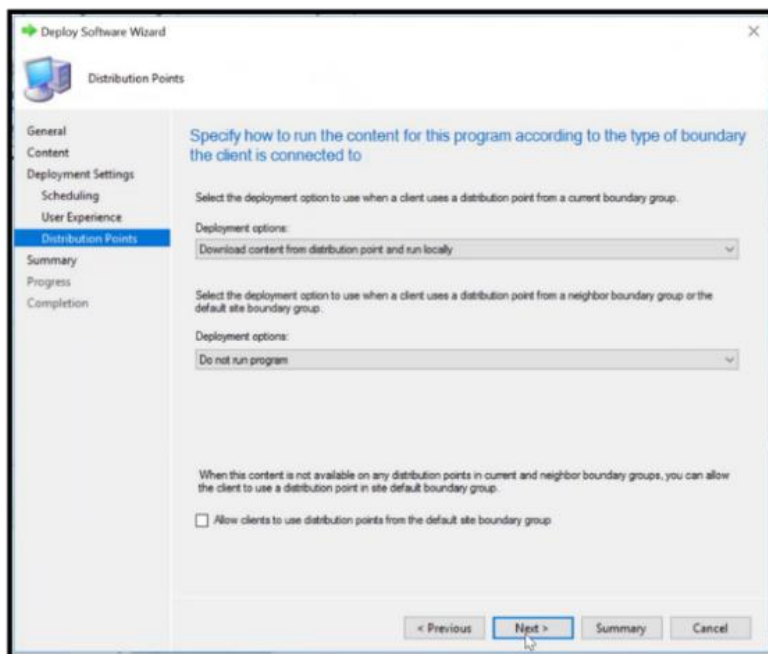
#### 1.4.6.6. User Experience



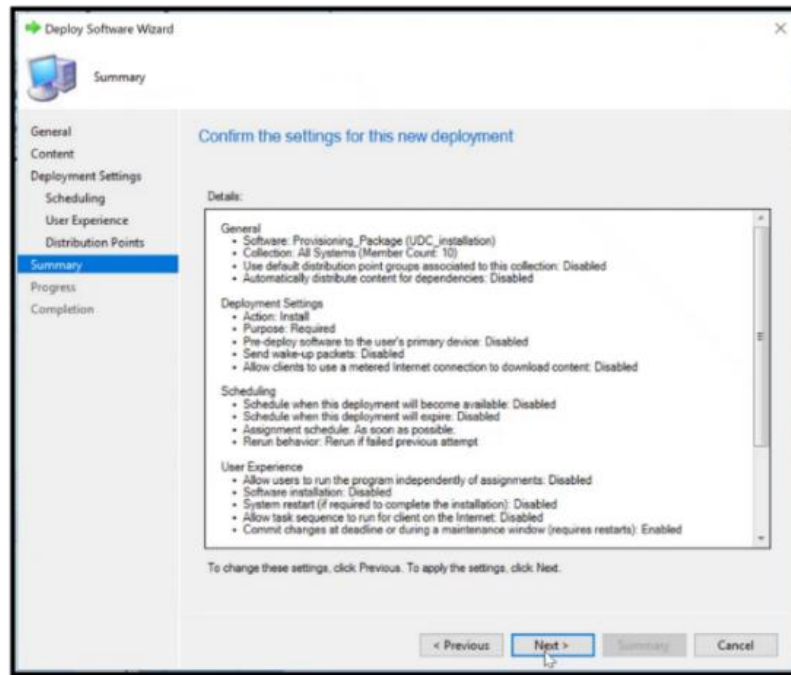
Keep user experience settings as default settings.

8. Click **Next**. You see the **Distribution Points** section.

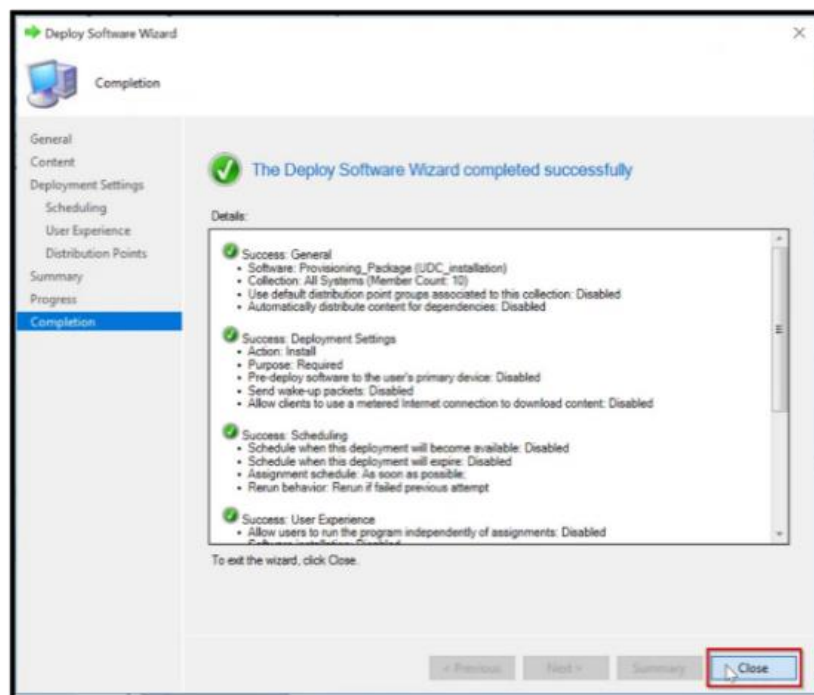
#### 1.4.6.7. Distributions Points



9. Keep the Distribution Points settings as the default settings and click **Next**.



10. Click **Next** to confirm General, Deployment, Scheduling and User Experience settings.



11. Click **Close** to exit the wizard.

#### 1.4.6.8. Deploy LDI Windows (Virtual) Package via SCCM

The process of deployment of LDI Windows (Virtual) Package is same as the standard agent deployment process.

Refer to [Configure SCCM to Deploy LDI Windows \(Physical\) Package on the Devices in the Application Mode](#) for deploying LDI Windows (Virtual) Package in the Application Mode.

Refer to [Configure SCCM to Deploy LDI Windows \(Physical\) Package on the Devices in the Package Mode](#) for deploying LDI Windows (Virtual) Package in the Package Mode.

**Note:** In the **Detection Rule** window:

- If the Setting Type is **File System**, enter **SysTrack** in the File or Folder name to check if the LDI Windows (Virtual) Agent is installed.



- If the Setting Type is **Registry**, enter SOFTWARE\WOW6432Node\Lakeside Software\LsiAgent\Debug to check if LDI windows (Virtual) Agent is installed.