



Lenovo Device Intelligence Plus SCCM Setup Guide



Name of the Document	Configuring SCCM to Deploy LDI Provisioning Package on Devices
Version	V2.12
Release Date	18 February 2022

Table of Contents

Copyright/Disclaimer	4
Chapter 1: Introduction	5
<i>Overview.....</i>	<i>5</i>
<i>Purpose.....</i>	<i>5</i>
<i>Prerequisite</i>	<i>5</i>
Chapter 2: Configure SCCM to Deploy LDI Windows (Physical) Package on the Devices in the Application Mode.....	6
<i>Create an Application.....</i>	<i>6</i>
Create an Application	6
<i>Add Deployment Type to the Application</i>	<i>7</i>
Select Deployment Setting	7
Specify Content Settings for Delivery to Devices	7
Specify Detection Rule.....	9
Configure User Experience Settings	10
Chapter 3: Deploy LDI Provisioning Package in SCCM to Fleet of Devices	11
<i>Select Application for Deployment to the Device Group.....</i>	<i>11</i>
<i>Specify Content Destination</i>	<i>12</i>
<i>Known Issues</i>	<i>13</i>
Chapter 4: Scheduling.....	14
Chapter 5: User Experience.....	15
Chapter 7: Alerts	16
Chapter 8: Uninstall UDC Client	17
Select the Application to Uninstall	17
Choose the Group of Device to Uninstall the Application	17
Specify Content Destination	17
Specify Settings to Control Software Deployment	17
Complete the Uninstall Process.....	17
Chapter 9: Configure SCCM to Deploy LDI Windows (Physical) Package on the Devices in the Package Mode.....	18

Create Package.....18

Create Program20

Deploy Provisioning Package23

Specify Content Destination24

Deployment Settings25

User Experience27

Distributions Points27

Chapter 10: Software Requirements 29

Chapter 11: Deploy LDI Windows (Virtual) Package via SCCM..... 30

Copyright/Disclaimer

Copyright © 2022, Lenovo. All rights reserved.

This document contains proprietary information of Lenovo that is protected by copyright and other intellectual property law which restricts its usage. The content in this document is subject to change without notice. If you find any issues in the documentation, please report to us in writing. Lenovo gives no representations or warranties of any kind regarding its content, including accuracy or completeness. Please do not reproduce or transmit any part of this document in any form or by any means, electronic or mechanical, for any purpose, without a written approval from Lenovo.

Chapter 1: Introduction

Overview

The Lenovo Device Intelligence (LDI) Plus SCCM QSG guide explains how to use System Center Configuration Manager (SCCM) to deploy the LDI Provisioning Package on the fleet of devices in your organization.

You can use following methods to deploy the package:

- Configure SCCM to deploy LDI Windows (Physical) Package on the Devices in the **Application Mode**
- Configure SCCM to deploy LDI Windows (Physical) Package on the Devices in the **Package Mode**

Purpose

You can configure SCCM to install the LDI Provisioning Package on all the devices in your organization and register them as per Service License Agreement between your organization and LDI Solutions. Instead of downloading Provisioning package on each device you can use SCCM to run it on the entire fleet of device. This saves your time and effort.

Prerequisite

Download the LDI Provisioning Package on the device you want to configure SCCM onto and deploy the package on the entire fleet of devices in your organization. To know how to download and install the package, refer [Quick Start Setup Guide](#).

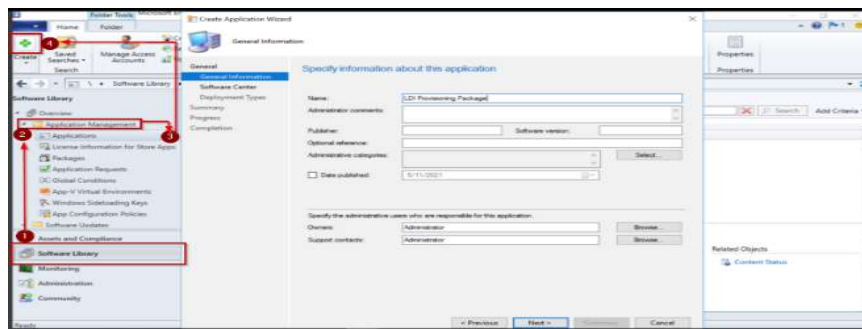
Chapter 2: Configure SCCM to Deploy LDI Windows (Physical) Package on the Devices in the Application Mode

Create an Application

Copy the following files downloaded from the LDI Windows (Physical) package to a folder in the computer with an account of the site server that has READ permission.

- Udc_setup.exe
- LenovoDeviceIntelligence-0.0.75.0.diagcab
- README.txt
- install-ldi.bat

Create an Application



In the SCCM account:

1. Click the **Software Library** tab. The **Software Library** window appears.
2. Click the **Applications Management** folder. The **Application** window appears.
3. Click **Applications**.

Create Application Wizard

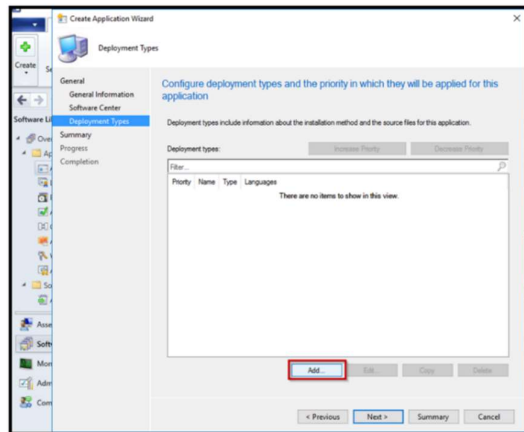
Enter information about a new application in the SCCM. Fill-in the name, version, and publisher of the application. You can also select the administrative owners (users) and category of the application.

4. Click **Create** button. The **Create Application** window appears.
5. Click **Next**. The **Deployment Types** page appears.

The new application is registered in SCCM. The next section **Deploy the Application** describes the steps to deploy the new application.

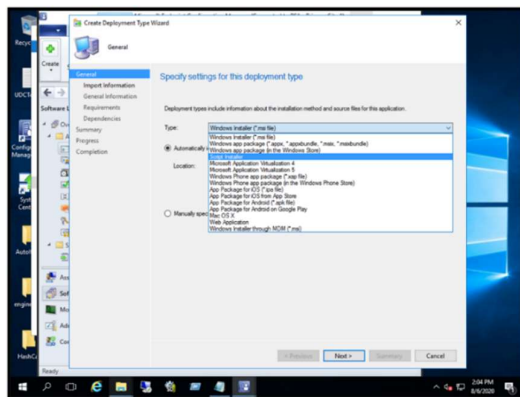
LDI Plus SCCM QSG Chapter 2: Configure SCCM to Deploy LDI Windows (Physical) Package on the Devices in the Application Mode

Add Deployment Type to the Application



In the **Deployment Types** page, click **Add** and then click **Next**. A window appears that shows a list of options.

Select Deployment Setting

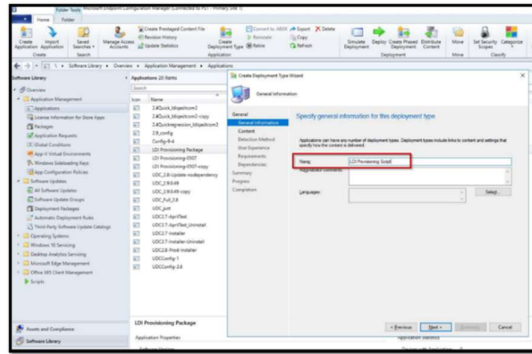


1. Select **Script Installer**.
2. Click **Next**.

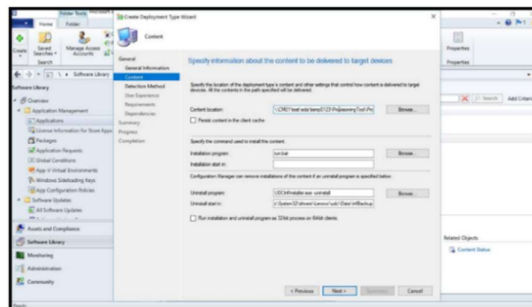
Specify Content Settings for Delivery to Devices

1. Enter **Name** of the application. For example, LDI Provisioning Script.
2. Click **Next**. The **Content - the Create Deployment Type** window appears.

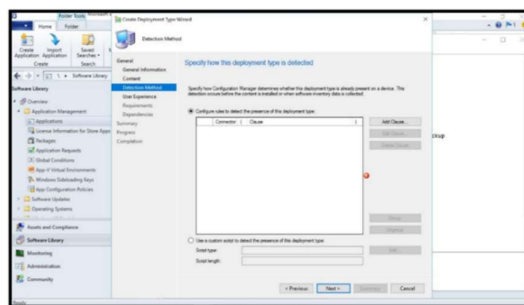
LDI Plus SCCM QSG Chapter 2: Configure SCCM to Deploy LDI Windows (Physical) Package on the Devices in the Application Mode



3. In the **Content** page, specify the path of the folder that has all files.



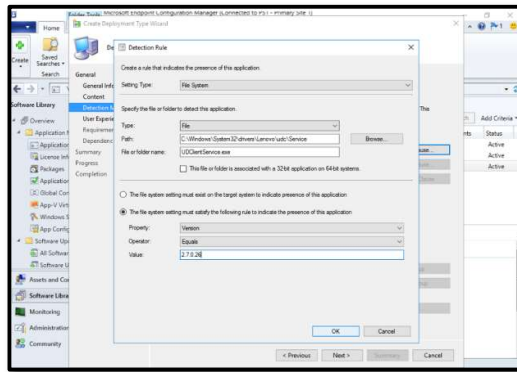
4. In the installation program field, enter the command - install-ldi.bat. If the target device is Virtual Machine, then enter the command Setup.exe /VERYSILENT.
5. In the Uninstall program field, enter the command - UDCInfInstaller.exe -uninstall.
6. In the Uninstall start field, enter the command
- C:\Windows\System32\drivers\Lenovo\udc\Data\InfBackup
7. Click **Next**. A window appears.
8. In the window, specify how the deployment type is detected.
9. Click **Add Clause**.



10. Click **Next**. The **Detection Rule** window appears.

LDI Plus SCCM QSG Chapter 2: Configure SCCM to Deploy LDI Windows (Physical) Package on the Devices in the Application Mode

Specify Detection Rule



In the **Detection Rule** window, configure the detection rules as follows:

1. In the **Setting Type** field, select **File System**.
2. In the **Path** field, enter **C:\Windows\System32\drivers\Lenovo\udc\Service**.
3. In the **File or folder name** field, enter **UDClientService.exe**

Note: De-select the **This file or folder is associated with a 32-bit application on 64-bit system** checkbox.

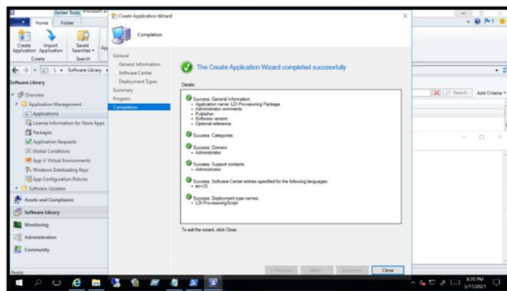
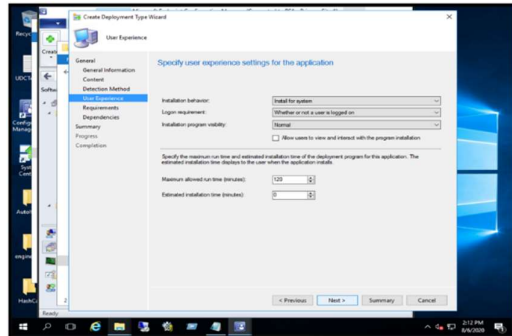
4. Select **The file system setting must satisfy the following rule to indicate the presence of this application** radio button.
5. In the **Property** drop-down list, select **Version**.
6. In the **Operator** drop-down list, select **Equals**.
7. In the **Value** field, enter the current UDC version.
8. Click **OK**.
9. Click **Next**.

LDI Plus SCCM QSG Chapter 2: Configure SCCM to Deploy LDI Windows (Physical) Package on the Devices in the Application Mode

Configure User Experience Settings

In the **User Experience** page, follow these steps:

1. In the **Installation behaviour** field, select **Install for a system**.
2. In the **Login requirement** field, select **Whether or not a user is logged on**.
3. In the **Installation program visibility** field, select **Normal**.
4. Click **Next**.

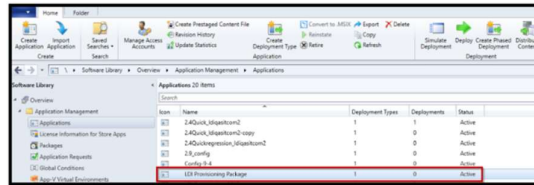


Complete the rest of the wizard to create the deployment type for the application.

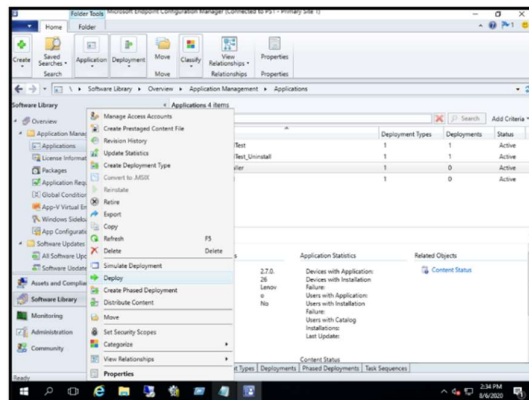
Chapter 3: Deploy LDI Provisioning Package in SCCM to Fleet of Devices

After you register the LDI provisioning pack and configure the deployment settings in the SCCM account, you must deploy or assign the application to a group or fleet of devices in the organization.

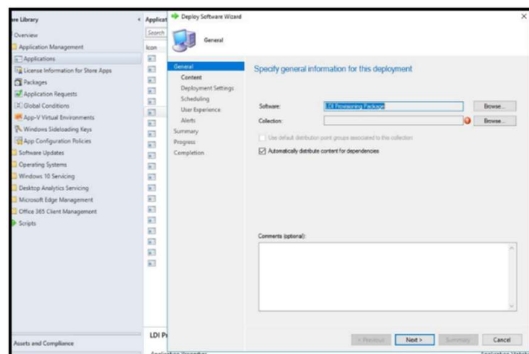
Select Application for Deployment to the Device Group



1. Select the application. For example, LDI Provisioning Package.
2. Right-click the selected application. A pop-up window appears.



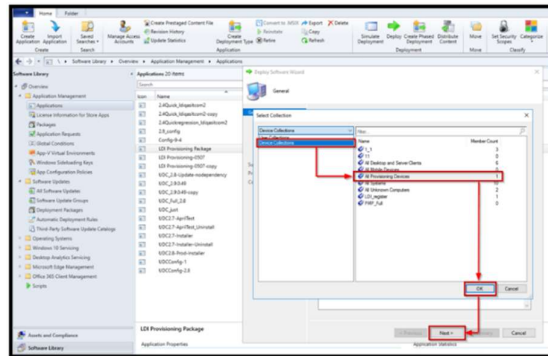
3. Click **Deploy**.



In the **General** page in the **Deploy Software Wizard**:

4. Click **browse** to select the software package. For example, LDI Provisioning Package.

5. In the **Collection** field, click **browse**. The **Select Collection** window appears.



6. In the **Select Collection** Window, click **Device Collections**. A list of device collections is displayed.

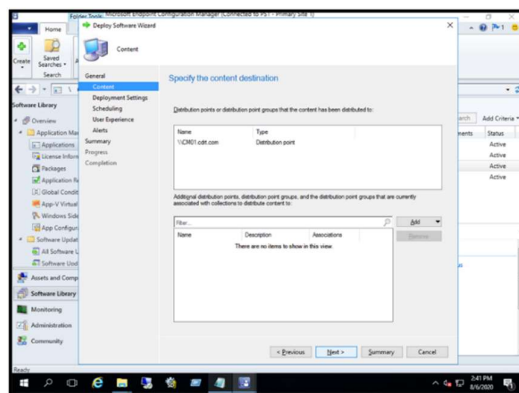
Device Collection

The fleet or group of devices. For example, the fleet of devices in your organization that is to be onboarded to the LDI platform.

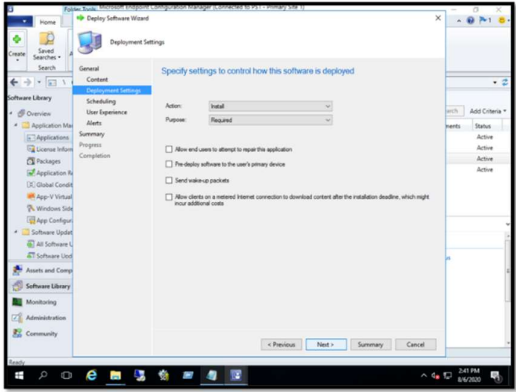
7. Click **Group or collection of devices**. For example, All Provisioning Devices.
8. Click **OK** and then click **Next**.

Specify Content Destination

1. Specify the distribution point where the collection of devices is to be deployed.
2. Click **Next**.



3. Select the deployment settings for the software. For example, LDI Provisioning Pack.



4. In the **Action** field, select **Install**.
5. in the **Purpose** field, select **Required**.

Mandatory

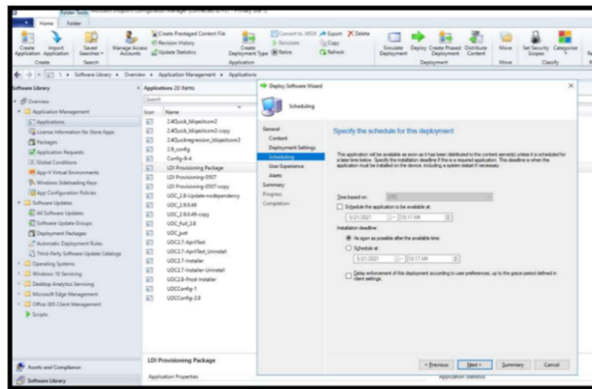
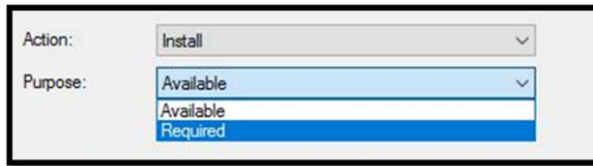
Select the **Required** option to install UDC Installer software.

Known Issues

Error Code	Error Description	Root Cause	Workaround
0x87D00324	When you test the SCCM deployment, a notification Installation Failed appears on end user's desktop, however the package is installed successfully.	The software detection rule was not found.	In the Deploy Software Wizard page, select User Experience . Then, in the User notifications drop-down list, select Hide in Software Center and all notifications .

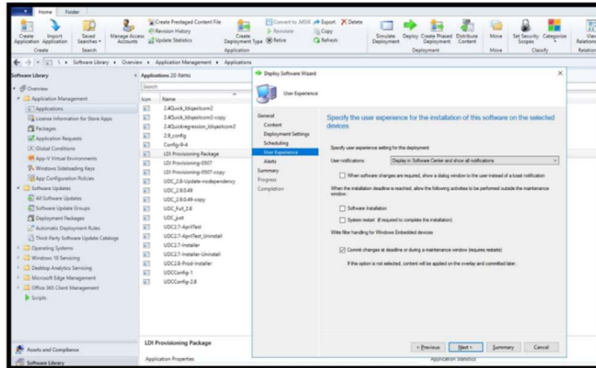
Chapter 4: Scheduling

Leave the Scheduling settings as default. If you want to use the Scheduling feature, then refer SCCM official guide.



Chapter 5: User Experience

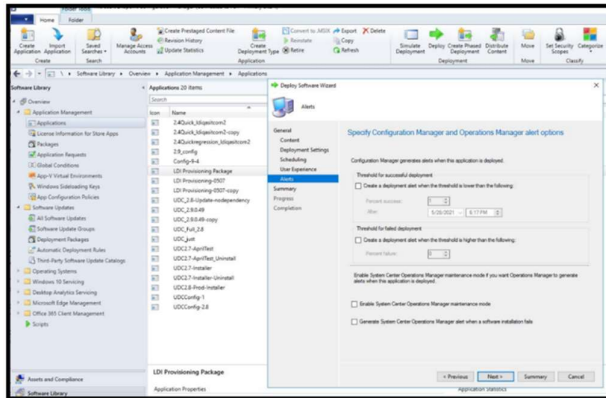
You are advised to leave the User Experience settings as default. If you want to use the User Experience feature, then refer the SCCM Official user guide.



Chapter 7: Alerts

You are advised to leave the Alerts settings as default. If you want to use the Alerts feature, then refer SCCM official user guide.

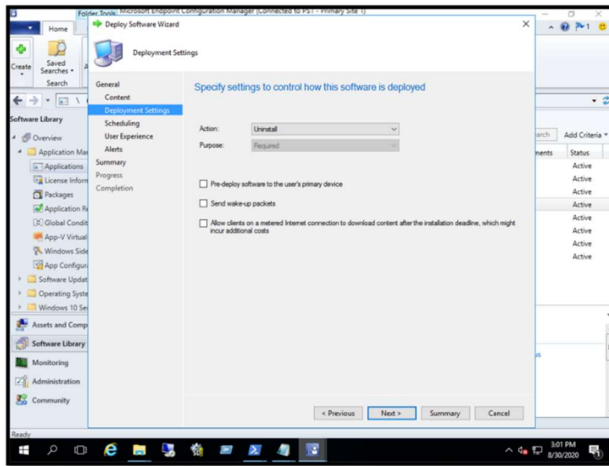
Complete the rest of the wizard to complete the deployment.



Verify if the devices in the Device Collection that are deployed with this application can successfully finish the installation.

Verify on the LDI portal if the devices are successfully activated.

Chapter 8: Uninstall UDC Client



To uninstall the LDI Agent, for example, UDC service, follow these steps:

Select the Application to Uninstall

1. In the Applications tab, select the application.
2. Right-click the application.
3. Click **Deploy**.

Choose the Group of Device to Uninstall the Application

1. Click **Device Collection**.
2. Select the **Automatically distribute content for dependencies** checkbox.

Specify Content Destination

Specify Settings to Control Software Deployment

Action: **Uninstall**

Purpose: **Required**

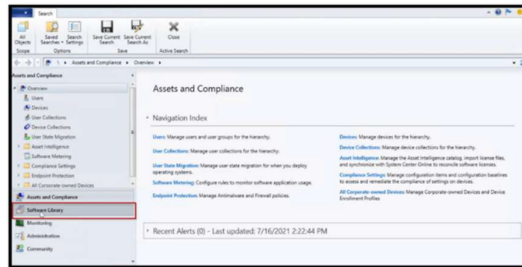
Complete the Uninstall Process

1. Verify if the devices in the Device Collection that are deployed with this uninstall deployment, have UDC software uninstalled from them.
2. On the LDI portal, un-claim or delete the devices before running the provisioning tool again.

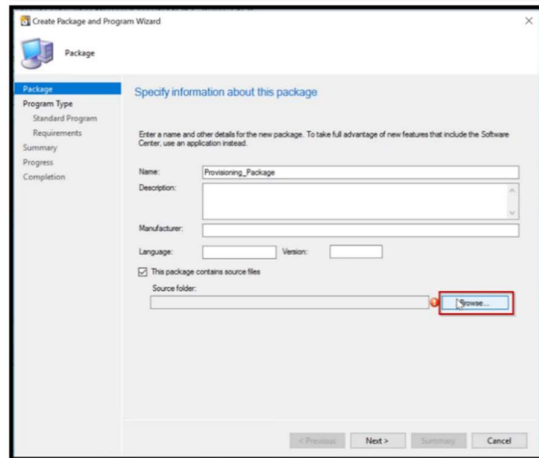
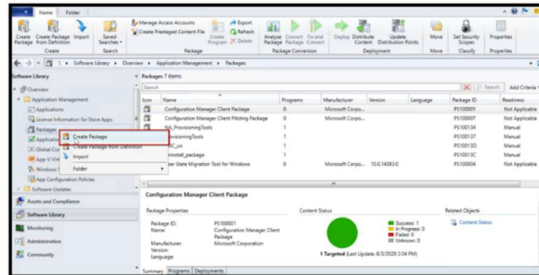
Chapter 9: Configure SCCM to Deploy LDI Windows (Physical) Package on the Devices in the Package Mode

Create Package

1. Log in to the SCCM Account.
2. In the navigation menu, click **Software Library**. The **Software Library** window appears.



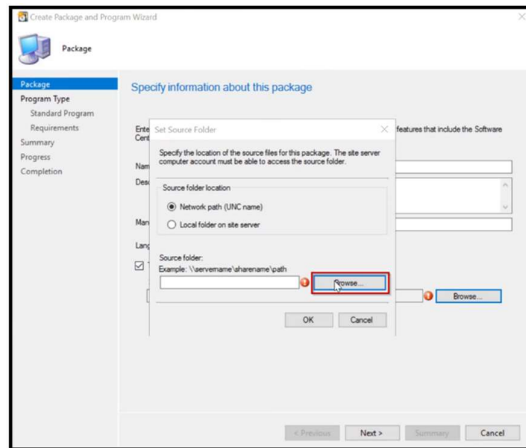
3. Click **Application Manager** Folder to view the sub menu.
4. Right-click **Packages**.
5. Right-click **Create Package**. The form field appears where you can enter details about the package.



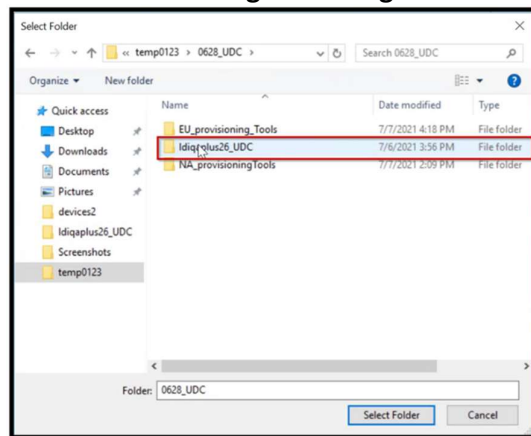
3. Enter the **name** of the package. For example, Provisioning_Package
4. Select the **checkbox**. This package contains the source file.

LDI Plus SCCM QSG Chapter 9: Configure SCCM to Deploy LDI Windows (Physical) Package on the Devices in the Package Mode

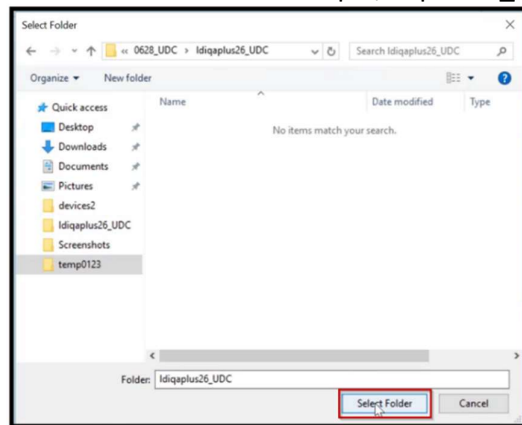
5. Click **Browse**.



6. In the **Create Package and Program Wizard** window, click **Browse**.

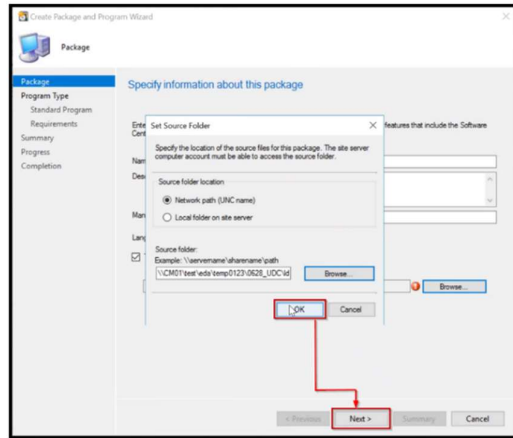


7. Select the **folder**. For example, **Idiplus26_UDC**.



8. Click **Select Folder**. A pop-up window appears.

LDI Plus SCCM QSG Chapter 9: Configure SCCM to Deploy LDI Windows (Physical) Package on the Devices in the Package Mode

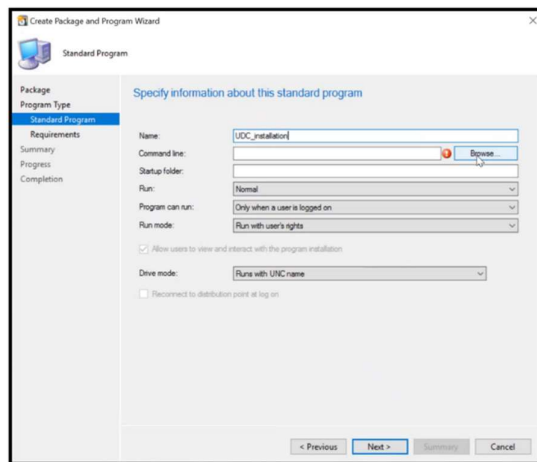


The window shows the path of the selected folder.

9. Click **OK**.
10. Click **Next**. You see Program Type section, where you can select the type of program you want to create.

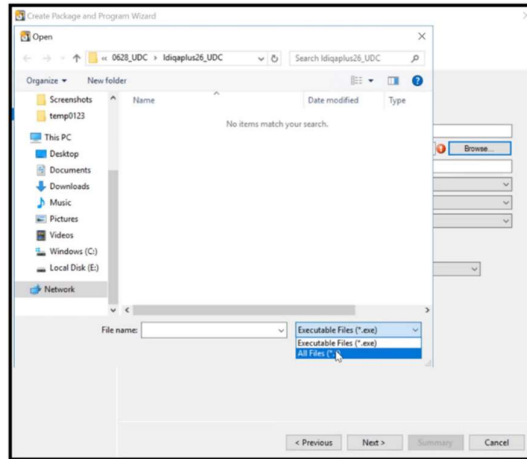
Create Program

1. Select **Standard program**.
2. Select **Next**. You see form field for the creating the program.

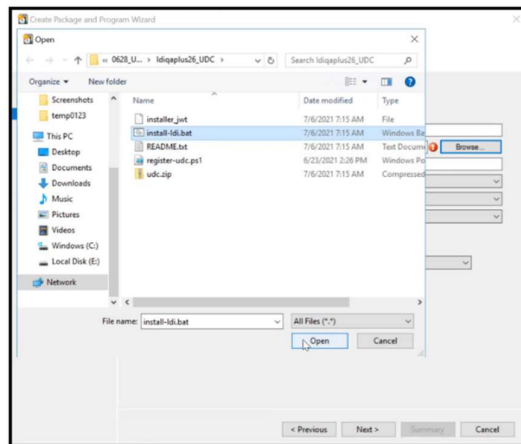


3. Enter the name of the program. For example, UDC_Installation.
4. In the Command line field, Click **Browse**. You see a pop-up window.

LDI Plus SCCM QSG Chapter 9: Configure SCCM to Deploy LDI Windows (Physical) Package on the Devices in the Package Mode

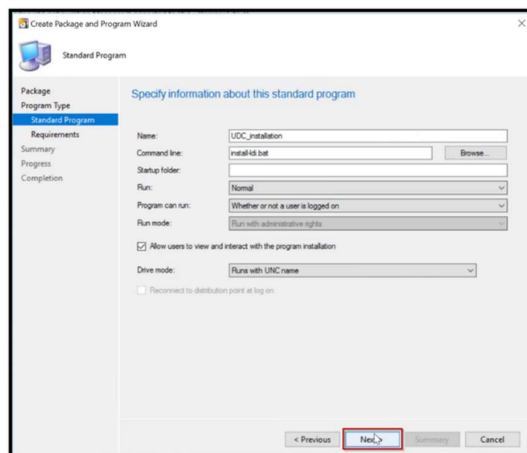


5. Select **All Files**. You see all the files.



6. Select **install-ldi.bat**.

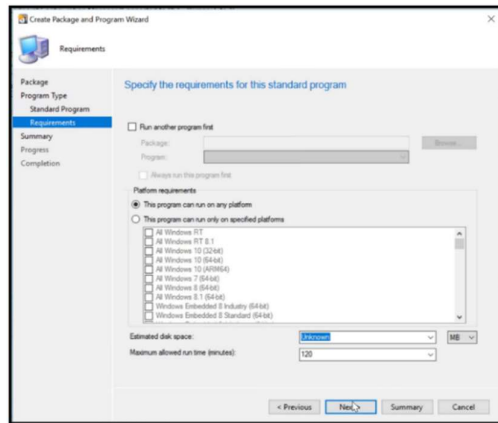
7. Select **Open**.



8. In the **Program can run** field, select the **Whether or not a user is logged on**.
9. Select the **checkbox** - Allow users to view and interact with the program installation.

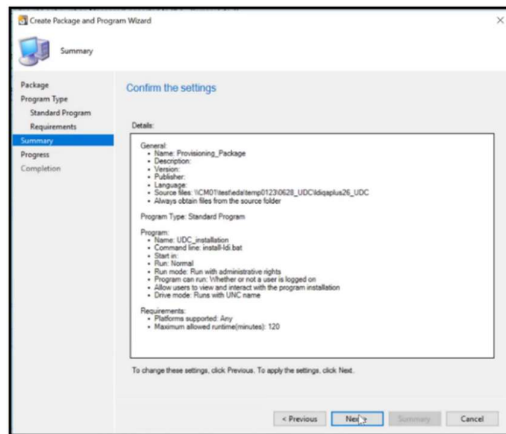
LDI Plus SCCM QSG Chapter 9: Configure SCCM to Deploy LDI Windows (Physical) Package on the Devices in the Package Mode

10. Click **Next**.

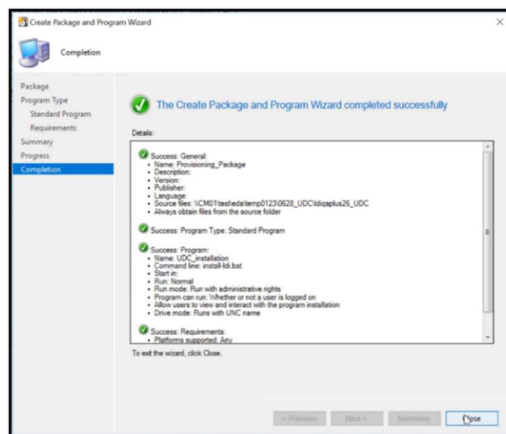


Note: In the Requirements section, keep the default settings, as shown in the screenshot.

11. Click **Next**.

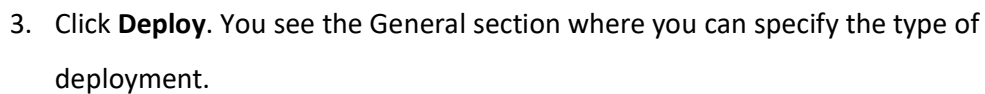
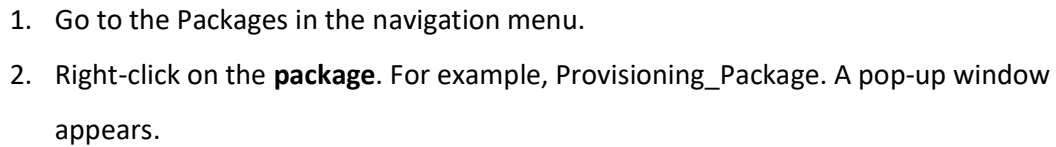


12. In the **Confirm settings** section, click **Next**, to confirm settings selected for creation of package and program.

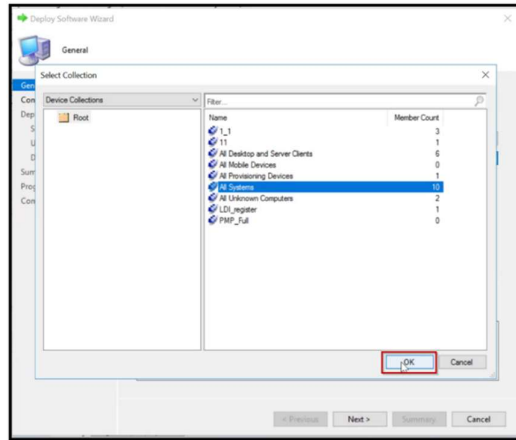


13. Click **Close** to close the wizard.

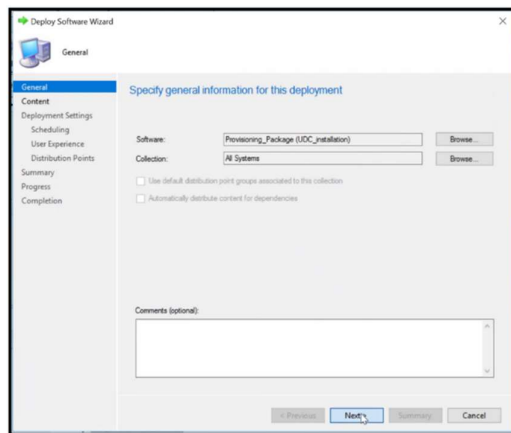
Deploy Provisioning Package



LDI Plus SCCM QSG Chapter 9: Configure SCCM to Deploy LDI Windows (Physical) Package on the Devices in the Package Mode

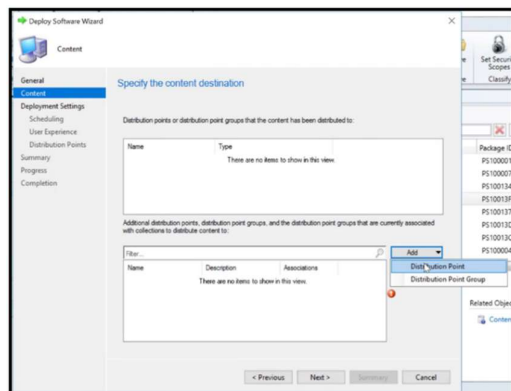


5. Select an option from the context menu in the pop-up window, e.g., All Systems.
6. Click **OK**.



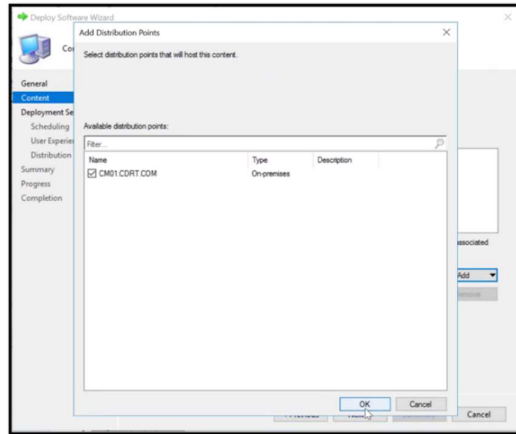
7. Click **Next**. The **Content** section appears.

Specify Content Destination

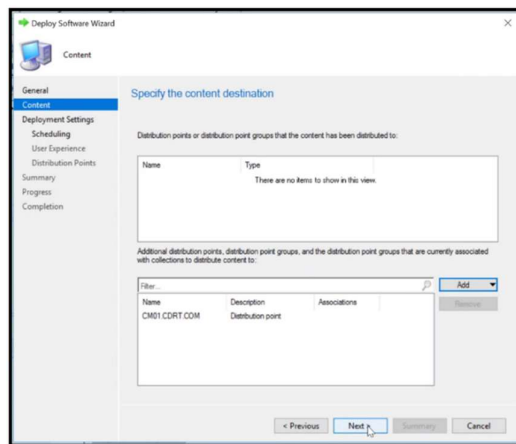


1. Click **Add** to view a drop-down menu.
2. Click **Distribution Point**. A pop-up window appears.

LDI Plus SCCM QSG Chapter 9: Configure SCCM to Deploy LDI Windows (Physical) Package on the Devices in the Package Mode

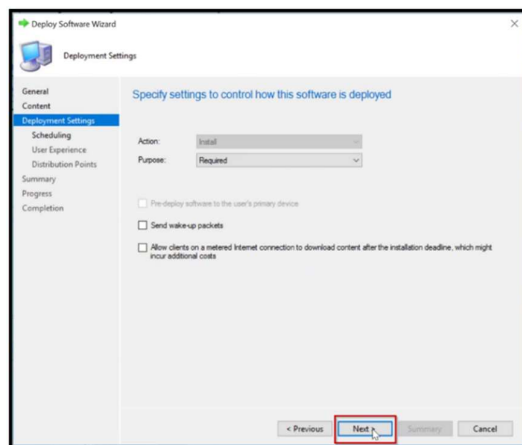


1. Select the CM01.CRDT.COM checkbox.
2. Click **OK**.



3. Click **Next**. The **Deployment Settings** section appears.

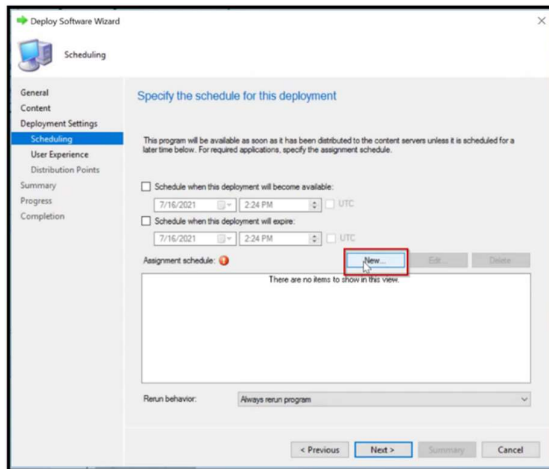
Deployment Settings



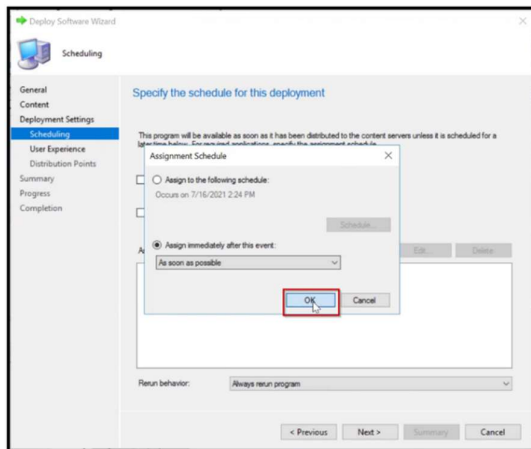
1. In the **Purpose** field, select **Required**.

LDI Plus SCCM QSG Chapter 9: Configure SCCM to Deploy LDI Windows (Physical) Package on the Devices in the Package Mode

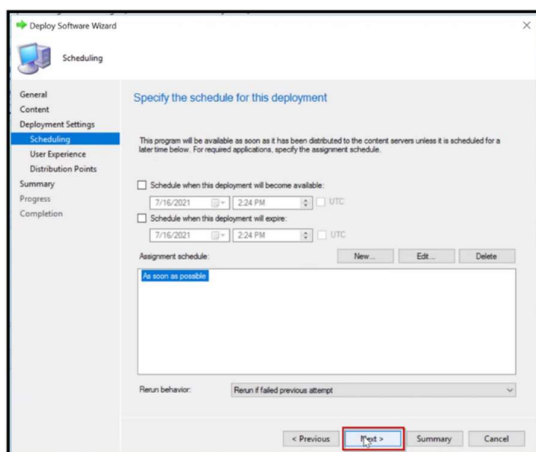
2. Click **Next**. The Scheduling section appears.



3. Click **New**. The **Deploy Software Wizard** appears.



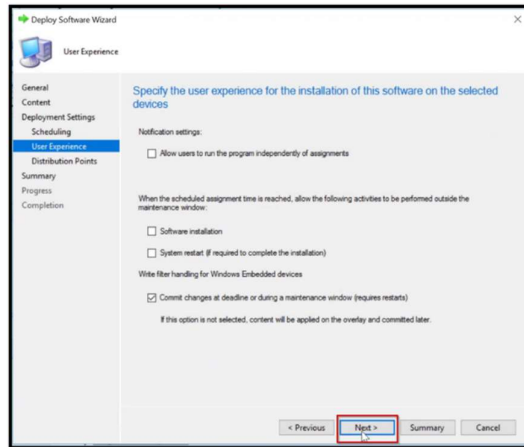
4. Select **Assign immediately after this event**.
5. In the field, select **As soon as possible**.
6. Click **OK**.



LDI Plus SCCM QSG Chapter 9: Configure SCCM to Deploy LDI Windows (Physical) Package on the Devices in the Package Mode

7. Click **Next**.

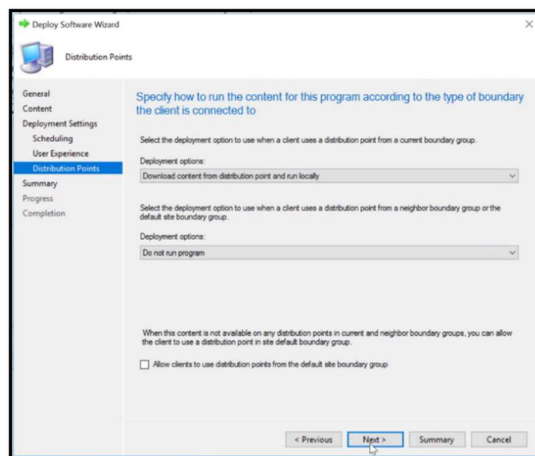
User Experience



Keep user experience settings as default settings.

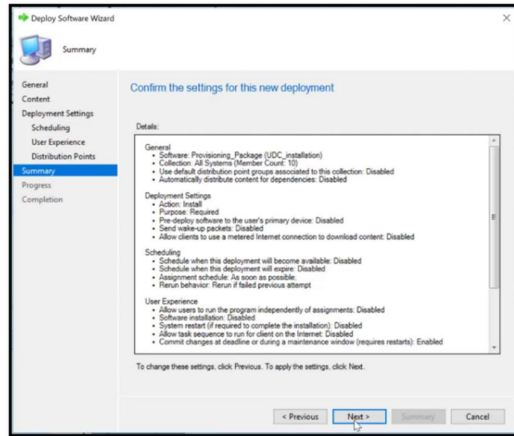
Click **Next**. You see the **Distribution Points** section.

Distributions Points

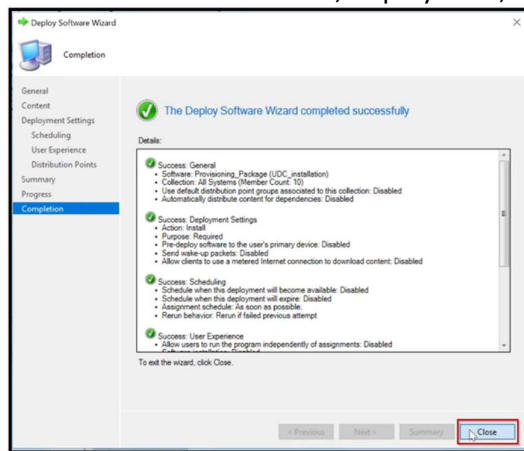


1. Keep the Distribution Points settings as the default settings and click **Next**.

LDI Plus SCCM QSG Chapter 9: Configure SCCM to Deploy LDI Windows (Physical) Package on the Devices in the Package Mode



2. Click **Next** to confirm General, Deployment, Scheduling and User Experience settings.



3. Click **Close** to exit the wizard.

Chapter 10: Software Requirements

Client software for this solution has a few requirements that the device must meet.

Category	Requirement
Manufacturer	Any device manufacturer is supported, though some features may only be available or verified on Lenovo devices.
Operating System	Windows 10 version 1809 (October 2018 Update) or newer. <ul style="list-style-type: none">• 64-bit OS• Special editions such as 10S or 10x are not currently supported
Hardware	<ul style="list-style-type: none">• Trusted Platform Module (TPM) 2.0 enabled.• Processor supports x86 instruction set architecture
Environment	<ul style="list-style-type: none">• Access to the Internet - specifically *.uds.lenovo.com on ports 80, 443 & 8883• Proxy is supported in some scenarios. Devices may require additional configuration to support.

Note: Type 1 hypervisors, and type 2 hypervisors are not supported.

Chapter 11: Deploy LDI Windows (Virtual) Package via SCCM

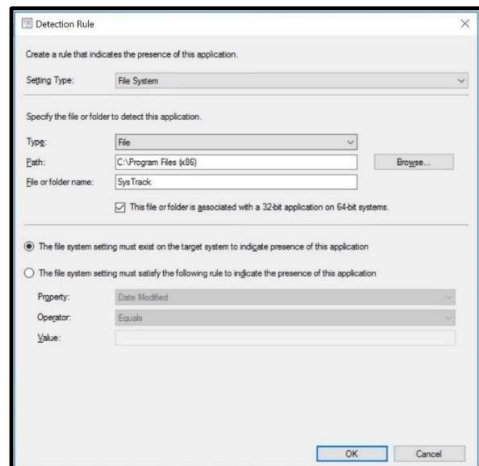
The process of deployment of LDI Windows (Virtual) Package is same as the standard agent deployment process.

Refer [Chapter 2: Configure SCCM to Deploy LDI Windows \(Physical\) Package on the Devices in the Application Mode](#) for deploying LDI Windows (Virtual) Package in the Application Mode.

Refer [Chapter 9: Configure SCCM to Deploy LDI Windows \(Physical\) Package on the Devices in the Package Mode](#) for deploying LDI Windows (Virtual) Package in the Package Mode.

Note: In the **Detection Rule** window:

- If the Setting Type is **File System**, enter **SysTrack** in the File or Folder name to check if the LDI Windows (Virtual) Agent is installed.



- If the Setting Type is **Registry**, enter SOFTWARE\WOW6432Node\Lakeside Software\LsiAgent\Debug to check if LDI windows (Virtual) Agent is installed.

