

The image features a pair of black Lenovo ThinkReality A3 AR glasses as the central focus. The glasses are shown from a three-quarter perspective, highlighting the temple with a camera lens and various sensors. The background is a light gray gradient with several other pairs of glasses and components, such as temple tips and ear hooks, scattered and slightly out of focus, suggesting a variety of configurations or accessories. The overall aesthetic is clean and professional.

**ThinkReality** A3

# QUICK START GUIDE

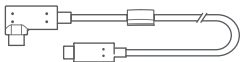
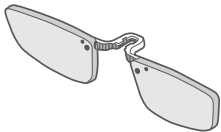
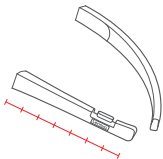
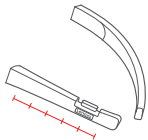
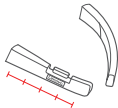
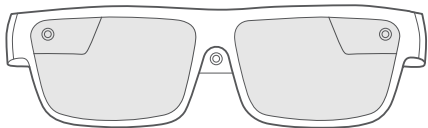
**Industrial Edition**

[support.lenovo.com/solutions/a3](https://support.lenovo.com/solutions/a3)

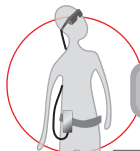
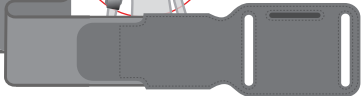
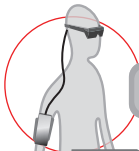
[support.lenovo.com/thinkreality](https://support.lenovo.com/thinkreality)

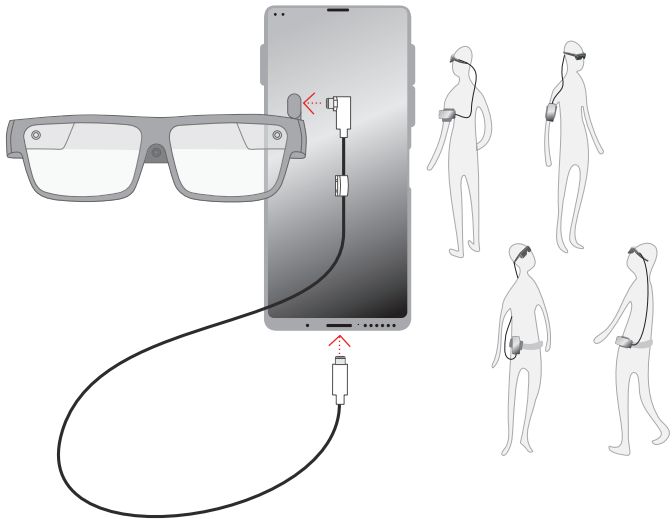
[www.lenovo.com](https://www.lenovo.com)

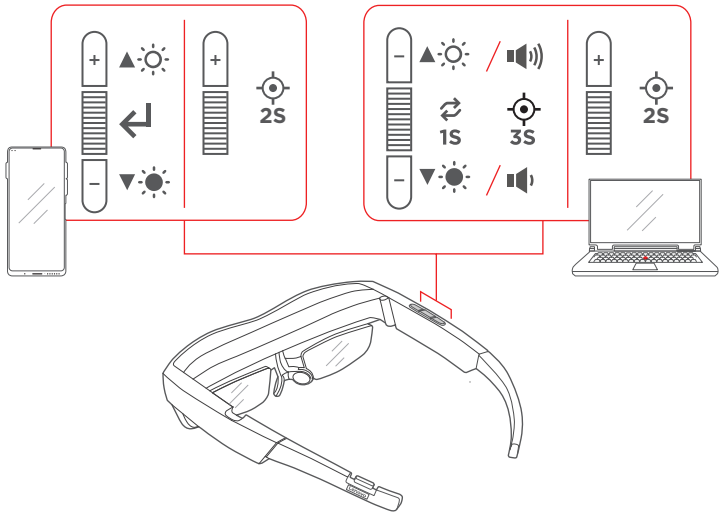
**Lenovo**



ThinkReality









1

[support.lenovo.com/solutions/HT511931](https://support.lenovo.com/solutions/HT511931)



**Reduce | Reuse | Recycle**

© Copyright Lenovo 2021.

V1.0\_20210201  
Printed in China  
081-0007-01013

